



HPA Motorsports Inc.
604-598-8520
www.hpamotorsport.com

Installation Guide for the HPA Motorsports Gen2 Haldex Switchable Sport/Competition Controller

Applications MK5 R32, Audi TT, & Audi A3



Gen2 Haldex Wiring Harness *Unleash the Power!*





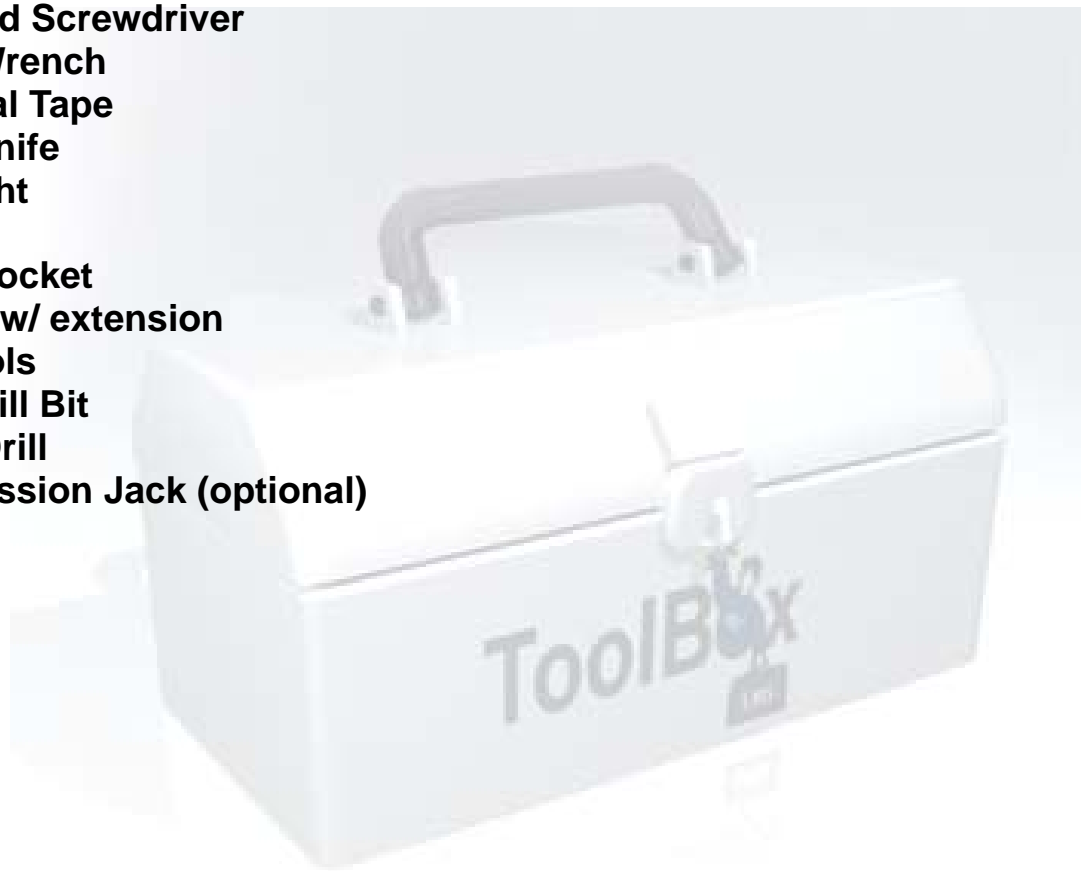
HPA Motorsports Inc.
604-598-8520
www.hpamotorsport.com

Included Parts:

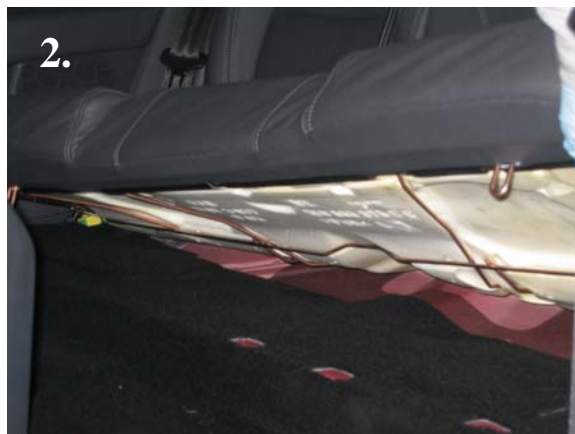
Haldex switch
Haldex switch knob
Mounting Nut (R32 center console)
Selector Knob
Position Identification sticker

Tools and supplies required:

T-20 Torx Bit
Flat Head Screwdriver
14mm Wrench
Electrical Tape
Utility Knife
Flashlight
Zip Ties
13mm Socket
Ratchet w/ extension
Pick Tools
3/16 Drill Bit
Power Drill
Transmission Jack (optional)



Step 1: Remove the rear seat bottom by pulling up firmly and pushing towards the rear of the car to expose the cover of fuel tank access panel.



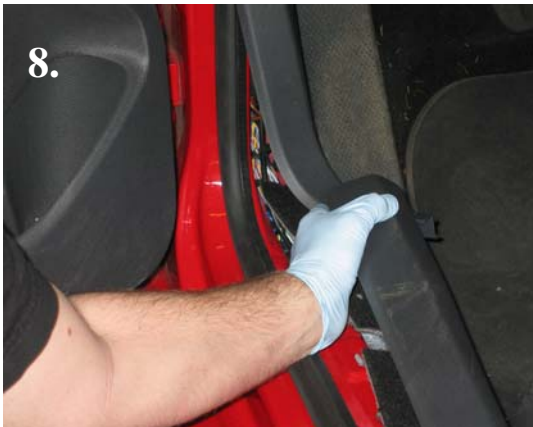
Step 2: Remove the fuel tank access panel by lifting or prying gently up to give an easy pathway for the HPA harness to reach the haldex controller mounted on the rear differential.



Step 3: Slide the harness grommet out of the panel and gently cut the grommet to give room for the harness to be run along side the factory wiring running towards the front of the car.



Step 4: Now carefully lift and remove the drivers rocker cover panel to give a clear path for the harness to be run making sure the harness won't be damaged by the seat or seat belt movement during use.

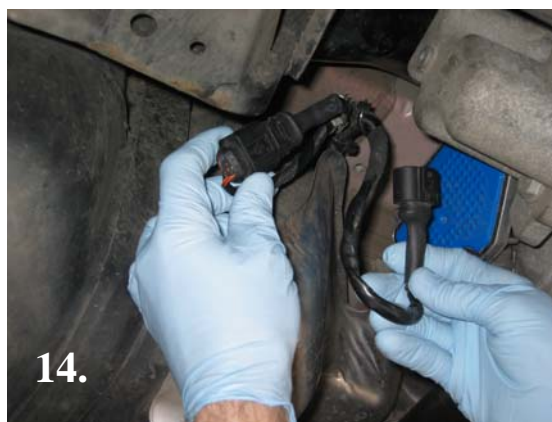
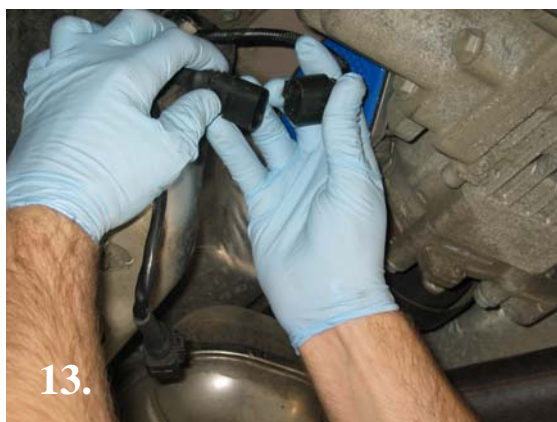


Step 5: Gently... remove the hood release handle by pulling the handle and removing the retainer clip from behind.



*** Gas tank straps may need to be loosened to make running the harness and switch Easier. (MAKE SURE GAS TANK IS SUPPORTED!)**

Step 4: After routing the haldex harness down to the controller, plug the factory VW harness into the switch harness and then the switch harness into the haldex controller.



***Zip tie and make sure that the harness is out of harms way. (drive shaft, heat shields, etc.)**



Step 6: Now using zip ties, run the harness safely and out of harms way along the rocker past the hood release, up over the knee panel and over towards the center console



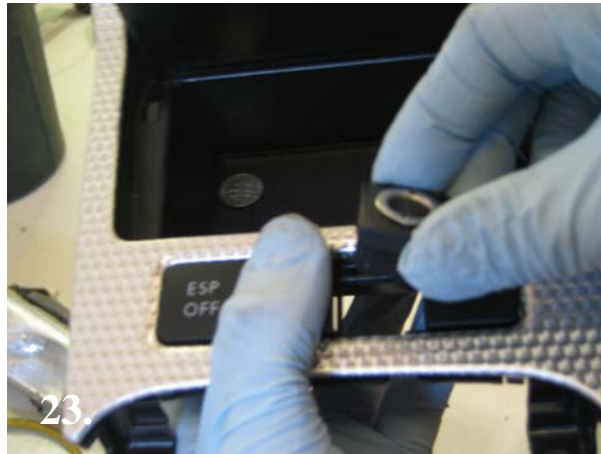
Step 7: It's safer to remove the ashtray and gear indicator surround so they don't get damaged. Just disconnect the lighting plug and the plug for the lighter.



Step 8: After the harness has been routed through the car the switch can be mounted in the blank spot by the ESP button. (R32)



Step 9: Now remove the plastic blank and use a 31/64" drill bit to drill a hole for the selector.



Step 10: After passing the selector through the plastic, use the provided nut to sandwich and secure the switch into position.

