

## Volkswagen > GTI, Rabbit > 2006 - 2008

### Body Interior

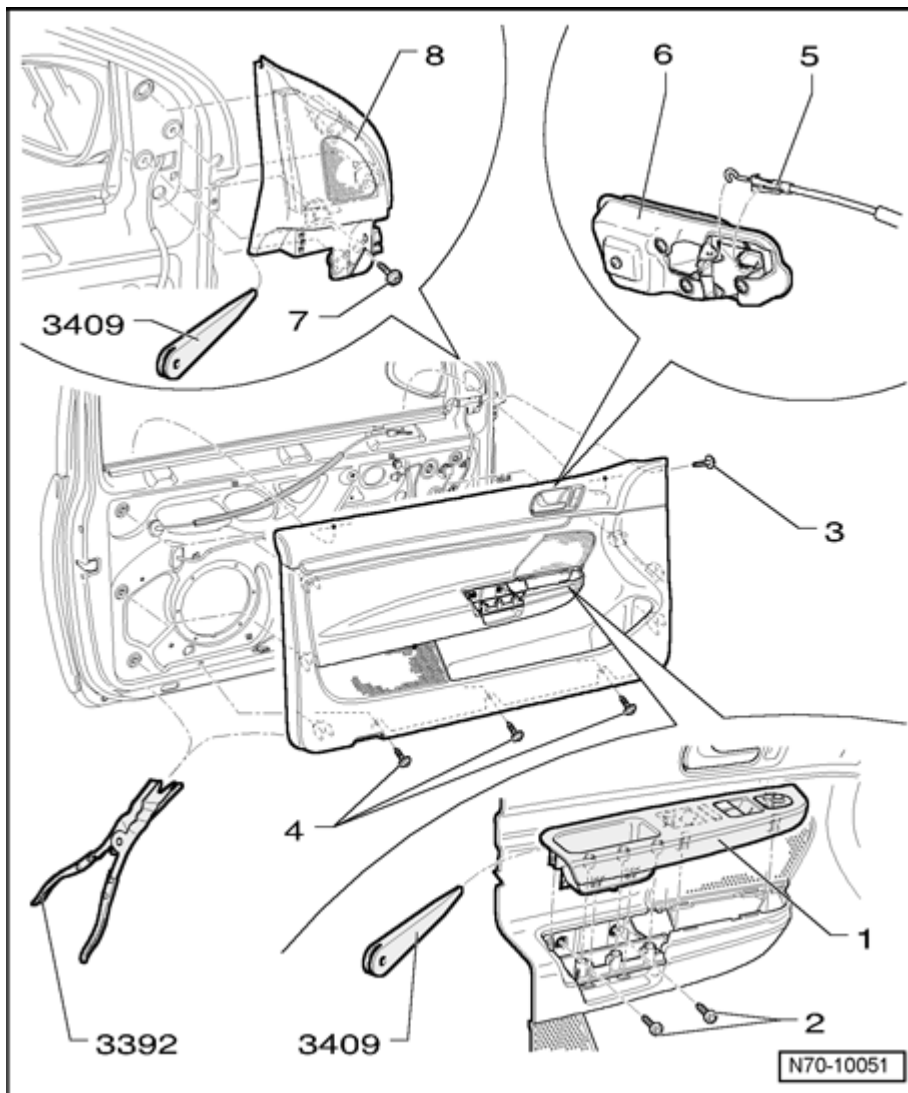
#### 70 - Removal and Installation

.

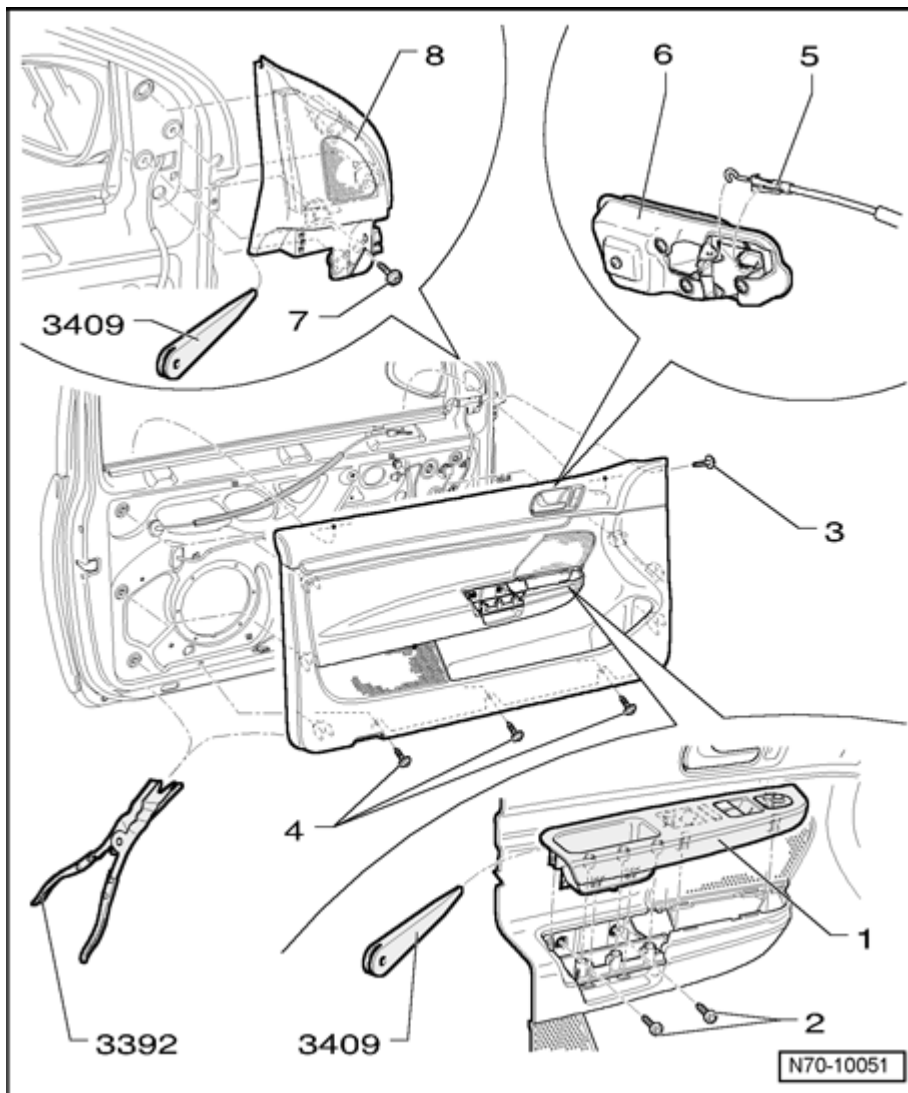
### Front Door Trim, Driver Side

#### Removing

- Switch off ignition.
- Pry upper section of grip shell - **1** - upward out of mounts in door trim using trim removal wedge 3409 .
- Depending on vehicle equipment, disconnect wiring harnesses from upper section of grip shell.
- Remove two screws - **2** - (1.5 Nm) in area handle molding area.
- Remove bolt - **3** - and three bolts - **4** - (2 Nm).
- Disengage door trim from mounts in lower area using disassembly pliers 3392 .
- Disengage door trim from mounts on the sides using disassembly pliers 3392 .
- Pull door trim vertically upward out of window shaft.
- In vehicles with radio system, disconnect wiring harness from loudspeaker.
- Disconnect door trim wiring harness from door control module.
- Detach release cable - **5** - from inside door release mechanism - **6** - .
- Remove screw - **7** - (2 Nm) and pry mirror triangle cover - **8** - out of mounts using trim removal wedge 3409 .



- In vehicles with radio system, disconnect wiring harness from loudspeaker in cover.



## Installing

- Installation is performed in the reverse order of removal.

**Note:**

♦ *Before installing, inspect the securing clips for damage and replace if necessary.*

Copyright © 2008 Volkswagen of America, Inc. and Bentley Publishers. All rights reserved. Last processed: