

## Volkswagen > GTI, Rabbit > 2006 - 2008

### Body Interior

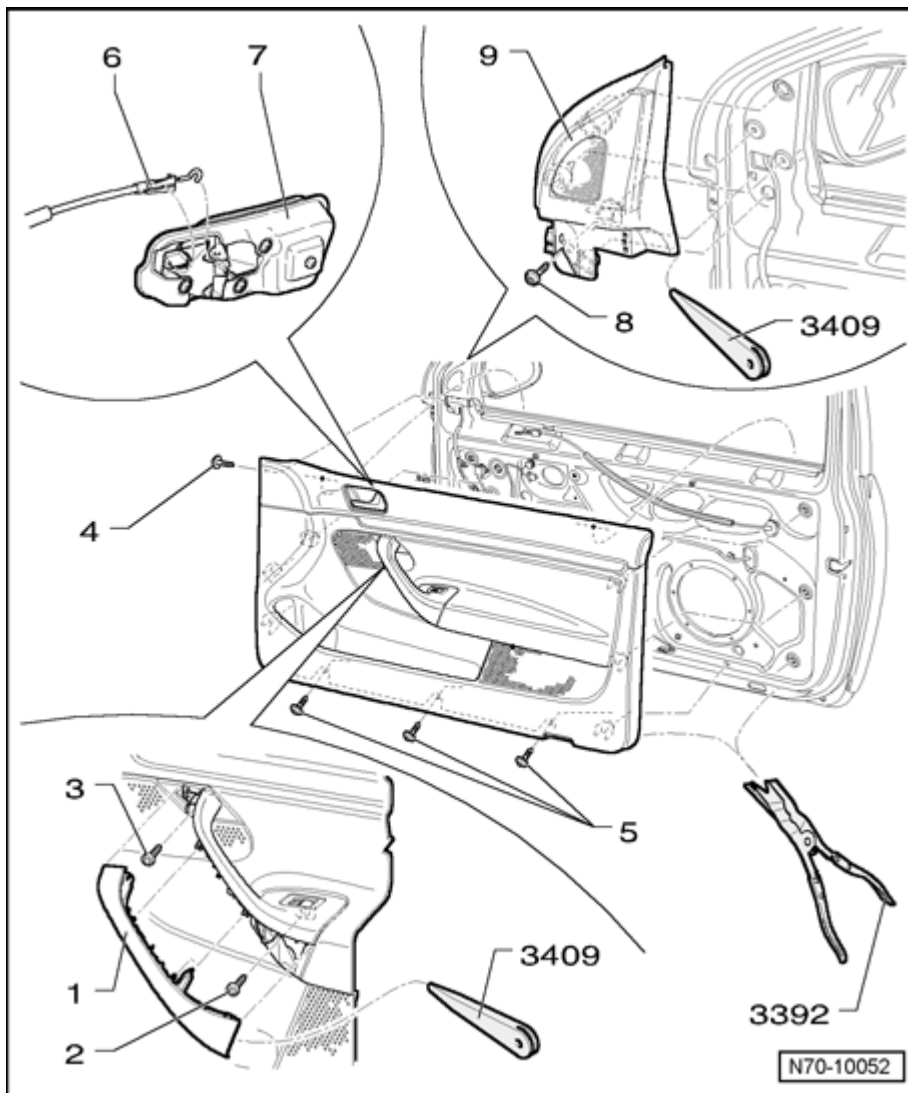
#### 70 - Removal and Installation

.

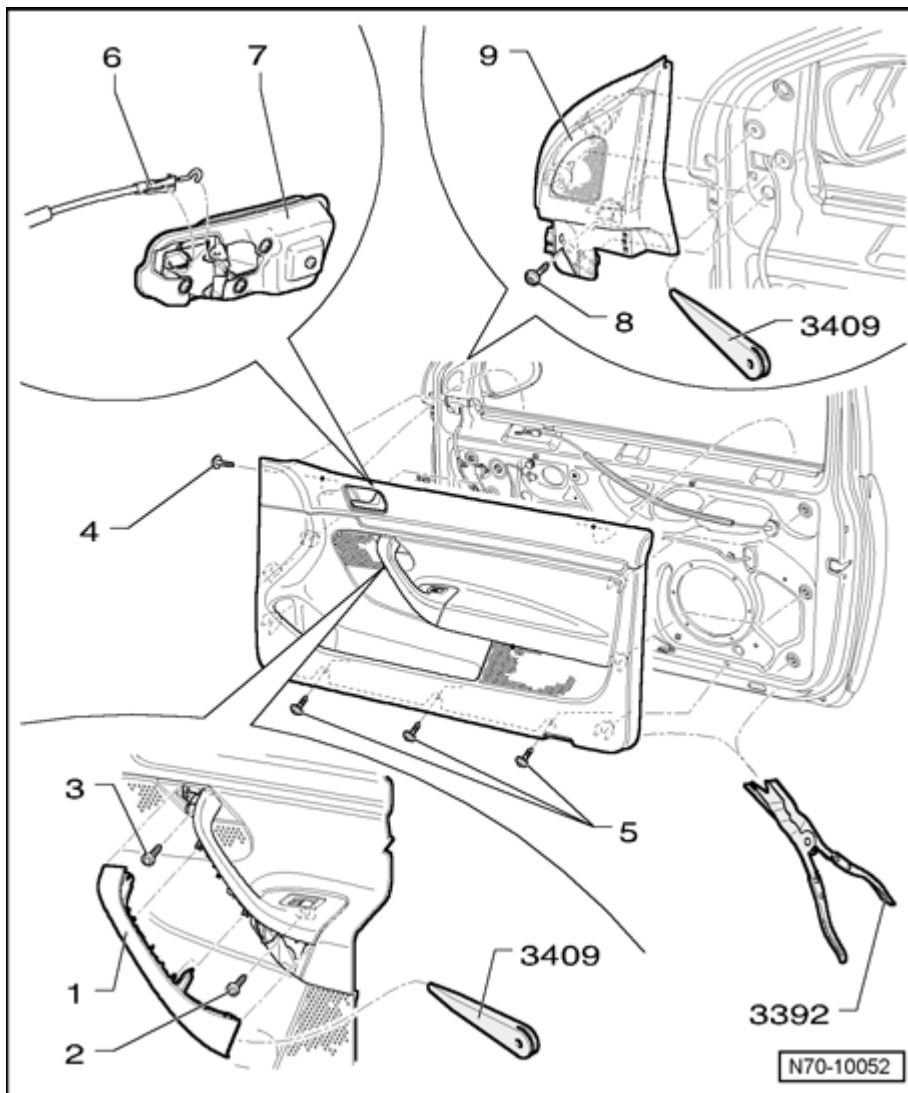
#### Front Door Trim, Passenger Side

##### Removing

- Switch off ignition.
- Pry upper section of grip shell - **1** - out of pull handle in door trim using wedge 3409 .
- Remove bolts - **2** - and - **3** - (1.5 Nm).
- Remove screw - **3** - and three screws - **4** - (2 Nm).
- Disengage door trim from mounts in lower area using disassembly pliers 3392 .
- Disengage door trim from mounts on the sides using disassembly pliers 3392 .
- Pull door trim vertically upward out of window shaft.
- In vehicles with radio system, disconnect wiring harness from loudspeaker.
- Disconnect door trim wiring harness from door control module.
- Disengage release cable - **6** - from interior door mechanism - **7** - .
- Remove screw - **8** - (2 Nm) and pry mirror triangle cover - **9** - out of mounts using trim removal wedge 3409 .



- In vehicles with radio system, disconnect wiring harness from loudspeaker in cover.



## Installing

– Installation is performed in the reverse order of removal.

### Note:

♦ *Before installing, inspect the securing clips for damage and replace if necessary.*

Copyright © 2008 Volkswagen of America, Inc. and Bentley Publishers. All rights reserved. Last processed: