

Volkswagen Golf 5 2004-> VW Rabbit GTI 2006->

28 - 1

Ignition, servicing

General notes on ignition system ⇒ [28-1, General notes on ignition system](#)

Safety precautions ⇒ [28-1, Safety precautions](#)

Ignition, assembly overview ⇒ [28-1, Ignition, assembly overview](#)

Ignition coils with power output stages, removing and installing ⇒ [28-1, Ignition coils with power output stage, removing and installing](#)

Test Data, Spark Plugs ⇒ [28-1, Test Data, Spark Plugs](#)

General notes on ignition system

- For the electric components to work properly, a voltage of at least 11.5 V is required.
- It is possible that the control module will recognize a malfunction and store a DTC during some tests. After completing all tests and repairs, DTC memory should be checked and erased if necessary ⇒ [24-3, DTC memory of Engine Control Module \(ECM\), checking and erasing](#) .
- If the engine only starts briefly and then turns off again after troubleshooting, repair or checking of the components, it may be that the immobilizer is blocking the Engine Control Module (ECM). Control module must then be adapted if necessary ⇒ *Vehicle Diagnosis, Testing and Information System VAS 5051 "Guided Functions"* .

Safety precautions

To reduce the risk of personal injury and/or damage to the fuel injection and ignition system, always observe the following:

- Do not touch or disconnect ignition coils with power output stages when engine is running or turning at starting RPM.
- Only disconnect and reconnect wires for injection and ignition system, including test leads, when

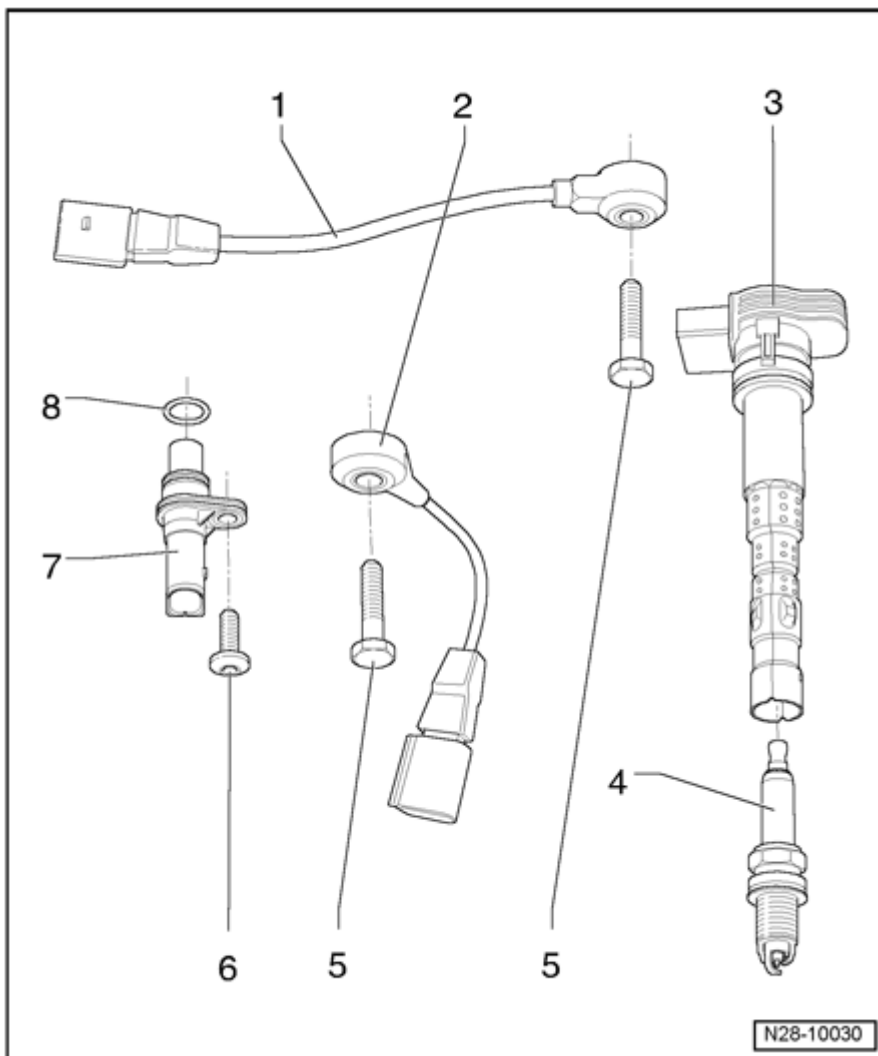
ignition is switched off.

If special testing equipment is required during road test, note the following:

- Test equipment must always be secured to the rear seat and operated from there by a second person.

If test and measuring equipment is operated from the passenger seat, the person seated there could be injured in the event of an accident involving deployment of the passenger-side airbag.

Ignition, assembly overview

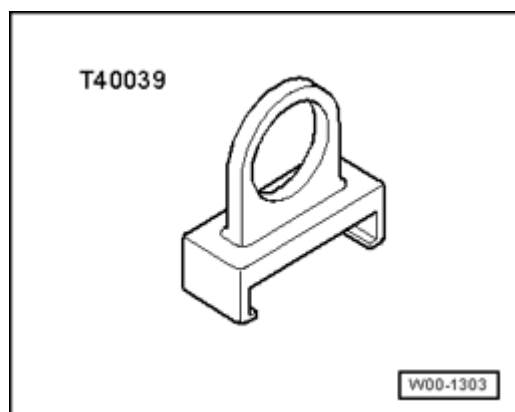


- **Knock Sensor (KS) I G61**
 - Terminals are gold-plated
- **Knock sensor 2 G66**

- Terminals are gold-plated
- **Ignition coil with power output stage (N70, N127, N291, N292)**
 - Removing and installing ⇒ [28-1, Ignition coils with power output stage, removing and installing](#)
- **Spark plug, 25 Nm**
 - Type and spark plug gap ⇒ [28-1, Test Data, Spark Plugs](#)
 - Removing and installing using spark plug removal tool 3122 B
- **20 Nm**
 - Tightening torque affects function of Knock Sensor (KS)
- **10 Nm**
- **Camshaft Position (CMP) Sensor G40**
 - Terminals are gold-plated
- **O-ring**

Ignition coils with power output stage, removing and installing

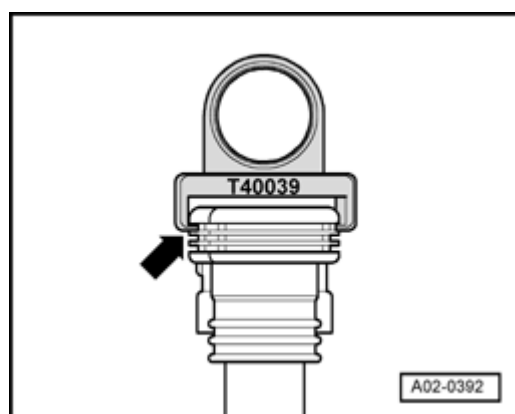
Special tools, testers and auxiliary items required



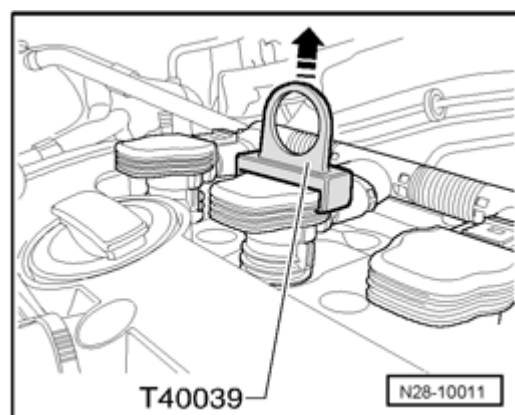
- Puller T40039

Note:

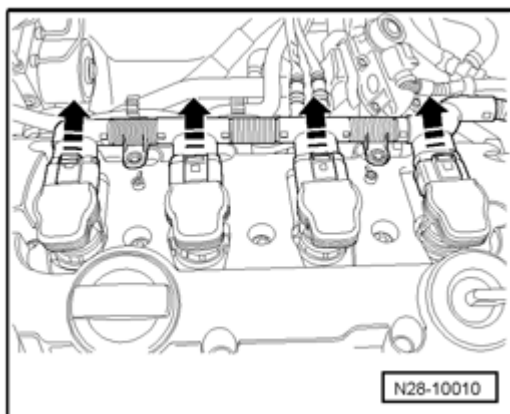
- *To pull off spark plugs, place ignition coil puller T40039 on topmost thick rib - **arrow** - of ignition coils with power output stages.*



- *Lower ribs may be damaged if they are used.*



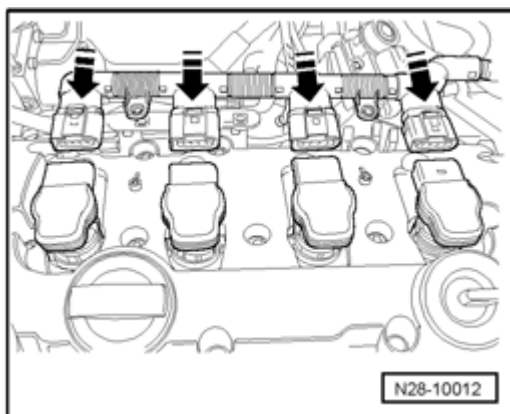
- Pull all ignition coils approx. 30 mm out of spark plug shaft using ignition coil puller T40039 .



- Disengage connector and disconnect all connector from ignition coils simultaneously.

Installing:

- Insert all ignition coils loosely into spark plug shaft.



- Align ignition coils to connectors and connect all connectors simultaneously onto ignition coils.
- Press ignition coils evenly onto spark plugs by hand.

Test Data, Spark Plugs

Engine Code		BPY
Ignition sequence		1-3-4-2
Spark plugs		
	VW/Audi	101,905,631 B
	Manufacturer code	F6KPP 332S
	Spark plug gap	0.9 to 1.1 mm
	Tightening torque	25 Nm