

+ Reply to Thread

Results 1 to 19 of 19

Thread: DIY: Bold-Sport.com Emblems

Thread Tools ▾ Search Thread ▾ Rate This Thread ▾ Display ▾

CiDirkona ▾

Member



Join Date: May 1st, 2007
Location: Tucson, Az
Posts: 2,371
Vehicles: mk6 R, mk6 GLI



□ DIY: Bold-Sport.com Emblems

03-01-2013 09:16 PM

Reply

#1

The piano black emblems were acquired here:
http://www.bold-sport.com/store/inde...product_id=215
http://www.bold-sport.com/store/inde...product_id=127

Now would also be a good time to install the vinyl that goes behind the rear emblem, if you're interested. (I have no experience with this product.)

http://www.bold-sport.com/store/inde...product_id=244 White, red, matte, carbon look, aluminum look, etc.

They also have the 'just in the insides' section too, although I think only in carbon-look. http://www.bold-sport.com/store/inde...product_id=157

While shipping claims 14 days or so, I got them in just a few business days.

Front:

Blow up motor (optional.)

Remove the upper front grill. There are 4 t25 torx screws here:



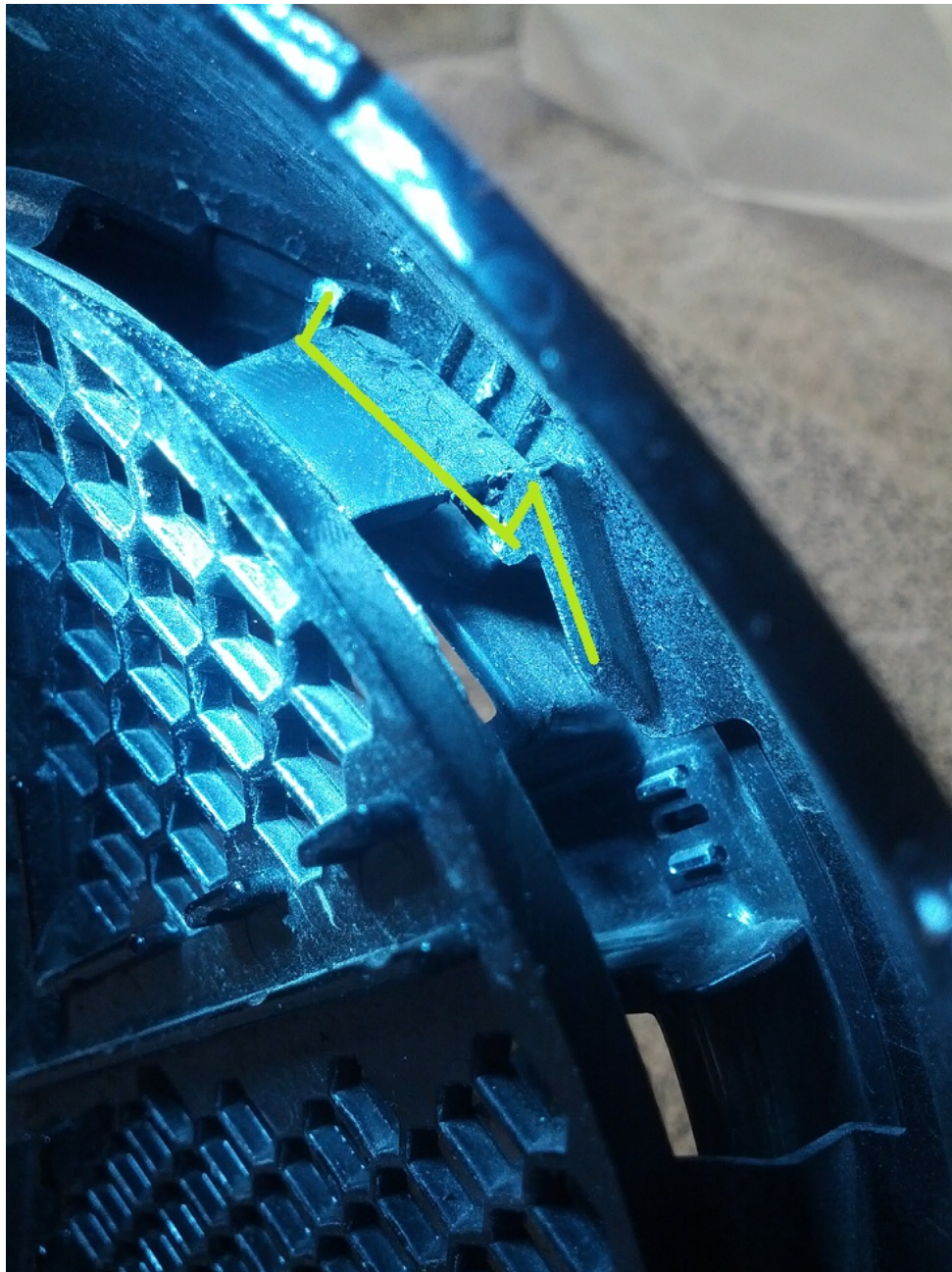
Then pull BOTH lower corners straight out **at the same time**. There are several clips holding the bottom edge of the upper grill to the bumper cover, but the majority of the 'grip' is in the lower corners:



You should now have the upper grill off of the car:



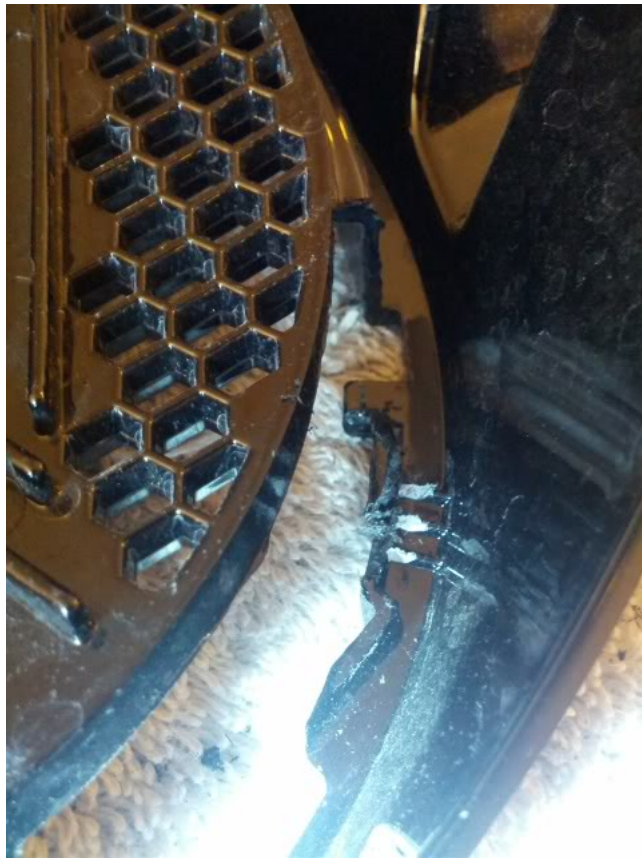
You will see the three clips that hold the emblem to the upper grill -- one on the top and two on the bottom. The one on the top should look like a normal clip. The portion of the grill that the emblem clips into is the section that looks like a ramp and cup:



However, the bottom two clips have been melted. You can see where the ramps and cups should have been underneath the melted areas:



Grind away at the plastic with a dremel tool or file until the emblem can come loose from the grill. Be careful not to go too deep or you could come through the visual portions of the grill on the front side.





Once the bottom two clips are loose, the top clip can be undone by swinging the bottom edge of the emblem out and up:



The grill will now be emblem free. You can see the approximate shape of the ramp and cup in the front edge of the grill.



Place the new emblem into the grill. It will have to be at a slight angle, tilted to the left from looking at the front.





Rotate the emblem clockwise (from the front,) paying attention to each of the three clips that they go up the ramps and into the cups. Since my bottom left (from the rear) ramp was nearly all eaten away by the dremel tool, I had to help it with a flat head screw driver.





Grill installation is the opposite of removal. If you opted to blow up your motor, carefully place the grill on your workbench, wait for everything to get finished, and resume crying into a beer.



REAR:

Lock the doors so the hatch doesn't open. If you have Kessy, hide yo' keys somewhere far away. Stick something comfy under the hatch handle:



Locate the screwdriver notch at the bottom of the handle:

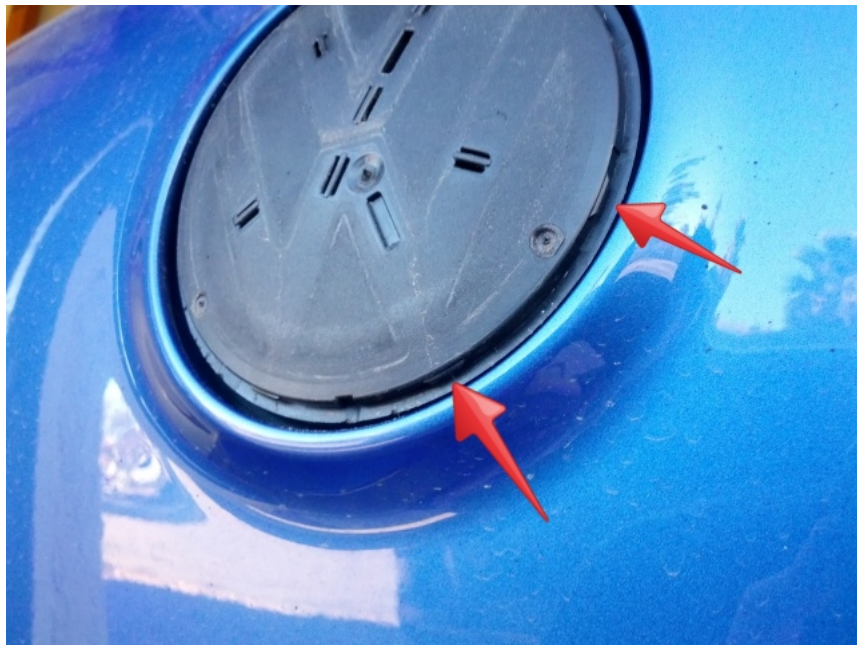


Carefully pry outward with a small screwdriver and/or razor blade. Do NOT twist the screwdriver or you will put dents in both the emblem and the handle. Do not sink the razor blade too deep into the handle -- only use the thickness of the blade to push the emblem off the handle. Start at the bottom and work your way up both sides. When you get to about half way up, work on the V and W. It should pop off then.





There are several clips for the V and W. When prying these, be sure to pry against a part of the handle that will be hidden behind the emblem.
Note where the 8 small nubs around the edge that hold the edge



Gaze at the beauty of the back of the Bold Sport emblem. Notice that it has official VW logos and VW part numbers...



I added a dab of RTV to the clips to prevent vibration from knocking it loose.



Place the new emblem on the handle and starting at the top, click the rim and the clips on the letters into place.



Enjoy your work. 🙌



Last edited by CiDirkona; 03-08-2013 at 05:13 PM.



R



Reply With Quote |

VWPDx

Member



Join Date: Jul 7th, 2011
Location: Portland, OR
Posts: 1,483
Vehicles: 2012 Golf R (2012-)
1997 GTI-VR6 (1998-2007)

☐ DIY: Bold-Sport.com Emblems

03-01-2013 09:31 PM [Reply](#) #2

Second best all time Golf R badge DIY!



Reply With Quote |

sc0ttyb

Member



Join Date: Apr 11th, 2007
Location: PHX
Posts: 695
Vehicles: 2013 Ibis White TTRS

☐ Re: DIY: Bold-Sport.com Emblems

03-01-2013 09:37 PM [Reply](#) #3

Nicely done. I love mine.

2013 IW TTRS | 1990 TR Cabby Best Seller | 2012 CSG Golf R (sold) | 2008 TR R32 (sold) | 2006 UG GTI (sold)



Reply With Quote |

Coderedpl

Member



Join Date: Jul 9th, 2006
Location: Valley Stream, NY
Posts: 2,702
Vehicles: 2012 VW Golf R 4dr
Rising Blue

☐ Re: DIY: Bold-Sport.com Emblems

03-01-2013 09:49 PM [Reply](#) #4

I think I kind of want these....
Awesome DIY

I drive a 2012 VW Golf R / **United Motorsport**



Reply With Quote |

EVO_S4

Member

Join Date: Feb 16th, 2004
Posts: 136

03-01-2013 11:07 PM [Reply](#) #5

nicely done

Current-2012 Golf R
Past 10 yrs-03 Evo VIII, 06 330I, 06 Evo IX, 08 Evo X, 09 335I



Reply With Quote |

webcrawlr

Member

Join Date: Oct 23rd, 2006
Posts: 1,843
Vehicles: 2012 Golf R

03-01-2013 11:54 PM #6

Originally Posted by **CiDirkona**

The piano black emblems were acquired here:
http://www.bold-sport.com/store/inde...product_id=215
http://www.bold-sport.com/store/inde...product_id=223

You sure you got the right front linked? It that one says Jetta (130mm) and the Golf VI listed here is 140mm.

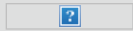
http://www.bold-sport.com/store/inde...product_id=127



Reply With Quote |

velocity196

Member



Join Date: Feb 19th, 2006
Location: Washington
Posts: 5,512
Vehicles: 2006 MK4 GTI, 2012 Golf R

03-01-2013 11:59 PM #7

GJ the black emblems look good on the RB

PTE5858 custom top mounted from -> **Todd Cope's Horsepower Barn**



Reply With Quote |

CiDirkona

Member



Join Date: May 1st, 2007
Location: Tucson, Az
Posts: 2,371
Vehicles: mk6 R, mk6 GLI



Re: DIY: Bold-Sport.com Emblems

03-02-2013 02:23 AM #8

Originally Posted by **webcrawlr**

You sure you got the right front linked? It that one says Jetta (130mm) and the Golf VI listed here is 140mm.
http://www.bold-sport.com/store/inde...product_id=127

Crap. You're right. I'll fix that.

Sent from my Verizon Wireless TI-89



Reply With Quote |

veuu

Member

Join Date: Jan 21st, 2006
Location: Lisle, IL
Posts: 394
Vehicles: '12 R CSG APR S1

03-07-2013 09:35 PM #9

Thank you for posting this DIY.

didn't want to start a new thread for this Bold Sport question.
Anyone else have fitment issues with Bold Sport 'R' alloy seat handle sills?



Reply With Quote |

sc0ttyb

Member



Join Date: Apr 11th, 2007
Location: PHX
Posts: 695
Vehicles: 2013 Ibis White TTRS

Re: DIY: Bold-Sport.com Emblems

03-07-2013 09:51 PM #10

Originally Posted by **veuu**

Thank you for posting this DIY.
didn't want to start a new thread for this Bold Sport question.
Anyone else have fitment issues with Bold Sport 'R' alloy seat handle sills?

Nope, mine fit perfectly.

2013 IW TTRS | 1990 TR Cabby Best Seller | 2012 CSG Golf R (sold) | 2008 TR R32 (sold) | 2006 UG GTI (sold)




Reply With Quote |


dnaks

03-07-2013 11:30 PM #11

Member



Join Date: Apr 3rd, 2005
Location: The heart of Oahu(Honolulu)
Posts: 556
Vehicles: VW GTI 1.8T '04 /VW R32 '04 /Audi A3 2.0T '08.5 TSI /Subaru STI'11/ VW GolfR '13




best info. yet on DIY 📖 📁

⚠️

Reply With Quote | 🗨️+

hazy450

Member




Join Date: Jul 22nd, 2010
Location: Panama City, Fl
Posts: 953
Vehicles: 2013 RBM Golf R Stg3, 2002 MKIV GTI

03-08-2013 12:55 AM

Reply

 #12

Originally Posted by **CiDirkona**



What's an R20? 🇩🇪

'13 RBM Golf .:R APR Stg3
'10 CW Bagged Tiguan APR Stg2
'02 Mk4 GTI Stock DD

⚠️

Reply With Quote | 🗨️+

retired

Member

Join Date: Mar 12th, 2007
Posts: 854

03-08-2013 01:04 AM

Reply

 #13


That's my next mod!

⚠️

Reply With Quote | 🗨️+

PDXA4

Member



Join Date: Oct 9th, 2001
Location: Austin, TX formally Bay Area, CA
Posts: 1,217
Vehicles: Audi D2 S8...

03-08-2013 03:04 PM

Reply

 #14

Nice writeup...Excellent guide for those who have not done this already...

Current: Golf-R Rising Blue 4-door loaded, Mazda MX-5, several mods #333
Former: Audi D2 S8 Ming Blue
Former: VW mkV GTi United Gray, B6 A4 Avant 1.8TQ Atlas Gray
B5 A4 1.8TQM Santorin Blue J31-K04 Beauty
B5.5 Passat TDI, Euro model...

⚠️

Reply With Quote | 🗨️+



All times are GMT -4. The time now is 12:59 PM.

Powered by [vBulletin®](#) Version 4.2.1
Copyright © 2014 vBulletin Solutions, Inc. All rights reserved.

Digital Point modules: [Sphinx-based search](#)