

[+ Reply to Thread](#)

Results 1 to 18 of 18

Thread: DIY: Installing Auto Folding Mirrors and enabling auto-dip for reverse[View First Unread](#) [Thread Tools](#) [Search Thread](#) [Rate This Thread](#) [Display](#)**twenzel** 

Member

Join Date: Jan 20th, 2011

Location: Austin, TX

Posts: 293

Vehicles: MK6 Golf R

DIY: Installing Auto Folding Mirrors and enabling auto-dip for reverse

07-02-2013 10:18 PM

[Reply](#)

#1

Recently I picked a auto folding mirror kit from Peter at Extremenetworks. The kit includes two new highline door controllers, mirror housing assemblies and a new switch for your driver side door. I didn't find much documentation and some might argue that it is not very difficult but here is a step by step guide for a 3 door anyway.

The door controller part number's last 3 digits correspond to the side the go on.

793 is the drivers side
792 is the passenger side

Below are the tools you will need:



T30 Torx
T25 Torx
M8 triple square
Trim removal tools
Needle nose pliers for good measure

Step 1: Roll the windows down and turn the car off.

Step 2: Remove door panels

Start by carefully pulling on the center trim piece with your fingers here:



There are about 12 clips that hold this in place. Once the center pops out work your way up the door trim piece and then back down the other side. The part closest to the door latch needs to come out last.



Set this piece to the side in a safe place.



Now we have this. There are 3 T30 bolts that need to be removed



Once you've removed the 3 bolts, you want to pop the door clips off. Be careful to pull straight out quickly and firmly. You can use a trim removal tool here if you feel that is more appropriate. I found it easiest to grab here and pull hard with both hands and that will pop 4 of the clips.



You might also go pick some of these up at the dealer in advance as they can break pretty easily. Once all 7 clips are released, you can now lift the panel up as it hangs on the door sill. There are 4 wire connectors on the driver side, 2 on the passenger side you have to unclip. If you want to completely put the panel off to the side, you'll also have to remove the door latch cable. I opted not to do this and let the panel rest and hang by the cable. You will have enough room to remove the door controllers with it hanging there.



Step 3: Swap the door controller

Now you will want to remove the window motor assembly that holds the door controller. This is held in by 3 T25 screws. Also unplug the 3 wire harnesses attached to the door controller. 2 black with red security tabs and one grey/purple latch style harness. Pop up the red security tabs first and gently release the clips.



Swap the door controller with the new high line controller and reinstall the door window motor assembly with the 3 T25 screws. Re connect the wire harnesses to the new door controller except the smaller black/red harness. It is the mirror harness.

Step 4: Swap mirror housing assemblies

Gently pull out and down on the tweeter housing and let it hang down. The mirror housing is held on by a single M8 triple square bolt.



You should now be able to pull the housing away from the car and route the wire harness through the hole in the door frame.

Step 5: Swap mirror and piano black mirror trim.

Pull the mirror out of the housing by pulling gently from the outside of the mirror to release the clips. There are two wires that power the heated coils of the mirror defroster. release those with some needle nose pliers



Here are the two clips that hold the black mirror housing trim to the assembly. Release these clips and pull the trim away from the housing.



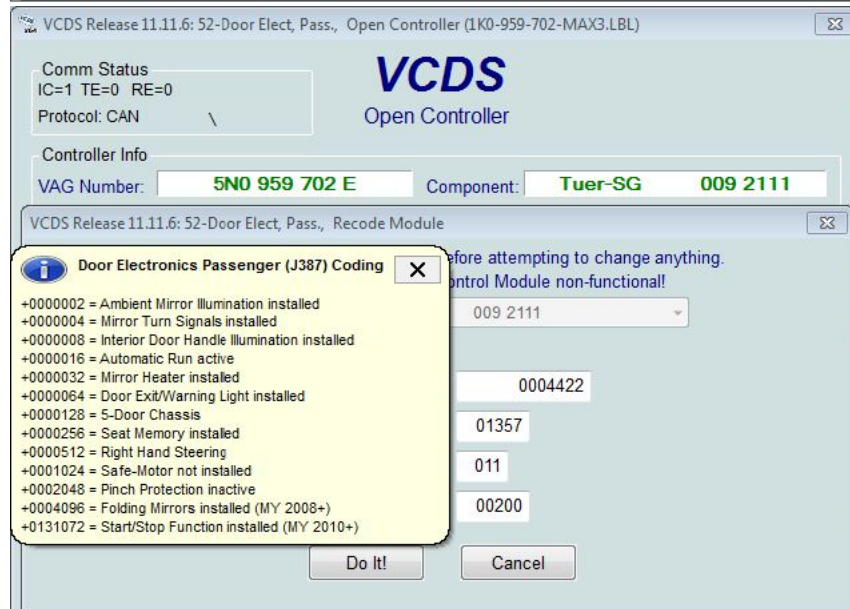
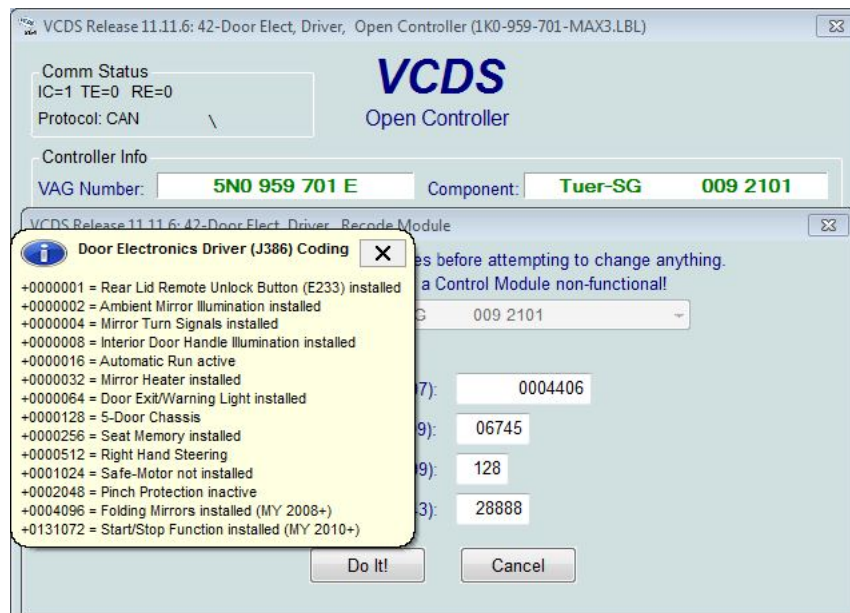
Step 6: Reassemble everything.

- Reconnect the mirror heating wires. Blue/black on the inside, red on the outside.
- Pop the mirror in to the mirror housing.
- Reattach the housing trim to the new motorized assembly.
- Route the new mirror housings harness back through the hole on the door frame and secure it with the two clips that hold it to the door frame.
- Plug the harness into the door controller.
- Re attach the tweeter housing using the clear circular nylon clip and two white plastic clips.
- Reset the 7 door panel clips and replace any broken clips
- Hang the door panel on the sill as it was before
- Pop the 7 clips back into the door frame
- Put in the 3 T30 bolts for the door panel
- Re attach the center trim for the door panel starting at the door latch side first.

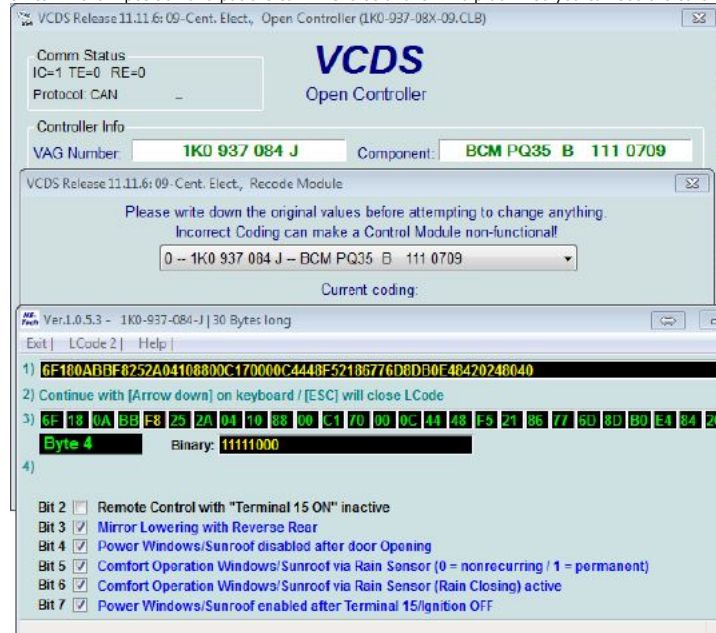
Step 7: VCDS Coding




Open VCDS software

You'll have to go into the driver side(42) and passenger side(52) door controller separately and set the value for the door assembly and which feature you want to enable. You take all the features you want and add the number together and that is the value to use. The most important is the 4096 for "folding mirrors installed" Below are the values I used on my 3-door.



To enable auto-dip on for the passenger mirror, you need to also check that box for Bit 3 on Byte 4 of the Central Electronics (09). Put the mirror switch in the R position and put the car in reverse and it will dip down so you can see the curb when parallel parking.



	My Golf R build thread		Reply With Quote
<div><div>TLud</div><div>Member</div><div>Join Date: Sep 28th, 2011</div><div>Location: Texas</div><div>Posts: 2,106</div><div>Vehicles: 2012 Golf R; 2012 Tiguan SEL</div></div>	<div>DIY: Installing Auto Folding Mirrors and enabling auto-dip for reverse</div> <div>07-02-2013 10:36 PM</div> <div>Reply</div> <div>#2</div> <div>Very nice write-up. What was the cost of all the hardware needed for this install? Feel free to PM me if you're not comfortable sharing publicly.</div> <div>Sent from my iPhone 4S using Tapatalk</div>		
	<div>2012 Rising Blue Golf R (Build Thread)</div> <div>2012 Night Blue Tiguan SEL w/ Premium Nav</div>		Reply With Quote
<div><div>twenzel</div><div>Member</div><div>Join Date: Jan 20th, 2011</div><div>Location: Austin, TX</div><div>Posts: 293</div><div>Vehicles: MK6 Golf R</div></div>	<div><div> Originally Posted by TLud</div><div><i>Very nice write-up. What was the cost of all the hardware needed for this install? Feel free to PM me if you're not comfortable sharing publicly.</i></div><div><i>Sent from my iPhone 4S using Tapatalk</i></div></div> <div>Here is his forsale thread. He usually has a couple kits in stock.</div> <div>http://forums.vwvortex.com/showthrea...m-Assembly-Kit</div> <div>My Golf R build thread</div>	<div>07-02-2013 10:57 PM</div> <div>Reply</div> <div>#3</div>	
			Reply With Quote
<div><div>Sound-Side Pitbulls</div><div>Member</div><div>Join Date: Jun 22nd, 2012</div><div>Location: CT</div><div>Posts: 318</div><div>Vehicles: 2013 Candy White R(Garage Queen</div></div>	<div>Great write up. Appreciate the time you put into this. It'll help me since I'm grabbing a set from Peter before Waterfest 😊</div>	<div>07-06-2013 12:35 AM</div> <div>Reply</div> <div>#4</div>	
	<div>2013 CW GOLF R: UNITEDMOTORSPORT // EURO OEM R RECAROS F+R // EURO OEM LED TINTED TAILS // EURO OEM CUPHOLDER // VAG-COM // R8 CP's // OEM R MOJO MATS</div>		Reply With Quote
<div><div>Stefano82</div><div>n00b</div><div>Join Date: May 11th, 2014</div><div>Location: [Italy-TS]</div><div>Posts: 4</div><div>Vehicles: GolfMK6TSI160RLine</div></div>	<div>Great work!</div> <div>I've done the same retrofit on my Golf. As you mentioned it is important to code also the BCM to enable the auto dip. Unfortunately the mirrors auto closing with key lock is not supported.</div> <div>Bye,</div> <div>S.</div> <div></div>	<div>05-15-2014 03:33 AM</div> <div>Reply</div> <div>#5</div>	
			Reply With Quote
<div><div>Beyond Sadistic</div><div>Member</div><div><div></div><div></div></div><div>Join Date: Dec 3rd, 2013</div><div>Location: Wisconsin</div><div>Posts: 490</div><div>Vehicles: 2013 Golf R 4D DBP</div></div>	<div>That looks a LOT easier than I thought it would. GREAT write up!</div>	<div>05-15-2014 09:16 AM</div> <div>Reply</div> <div>#6</div>	
	<div>Neuspeed Intake Podi Boost Gauge Ultimate Racing Downpipe Autotec HPFP United Motorsports Stage 2 42DD Shifter Bushings Whiteline Torque Mount CTS Throttle Pipe</div>		Reply With Quote
<div><div>LastRinATX</div><div>Member</div><div>Join Date: Oct 8th, 2013</div><div>Location: Leander (North Austin)</div></div>	<div>Can you just enable the auto-dip on a normal US Golf R or do I need all these mirrors and controllers? Folding is super cool, but the auto-dip I could really use.</div>	<div>05-15-2014 09:19 AM</div> <div>Reply</div> <div>#7</div>	

Posts: 195
Vehicles: 2013 VW Golf R w/NAV

His: 2013 Golf R; Black; Navi/Sunroof - UniConnect Stage 2, Uni Intake, Uni FMIC, Uni TBE, DG Sigma 6, OE Euro LED Tails, Unibrace XB, emblem RVC, USP Red dogbone insert, XPEL Ultimate(full front end+)
Hers: 2007 New Beetle - Stock

Reply With Quote

Beyond Sadistic

Member

Join Date: Dec 3rd, 2013
Location: Wisconsin
Posts: 490
Vehicles: 2013 Golf R 4D DBP

05-15-2014 09:42 AM [Reply](#) #8

Originally Posted by **LastRinATX**

Can you just enable the auto-dip on a normal US Golf R or do I need all these mirrors and controllers? Folding is super cool, but the auto-dip I could really use.

I would assume you need the modules to perform the auto-dip function. I very well could be wrong though.

Neuspeed Intake|Podi Boost Gauge|Ultimate Racing Downpipe|Autotec HPFP|United Motorsports Stage 2|42DD Shifter Bushings|Whiteline Torque Mount|CTS Throttle Pipe

Reply With Quote

Suture

Member

Join Date: Sep 15th, 2000
Location: Northern VA
Posts: 1,524
Vehicles: 2013 Golf R

05-15-2014 11:24 AM [Reply](#) #9

Looks easier than I imagined it would be. Think I will consider this for this summer... I really miss having auto-dip.

2013 Golf R: APR Stage 1+, VWR intake, APR HPFP, APR Mobile, LED tails, OEM RVC, P3 Cars VIDI

Reply With Quote

Stefano82

n00b

Join Date: May 11th, 2014
Location: [Italy-TS]
Posts: 4
Vehicles: GolfMK6TSI160RLine

DIY: Installing Auto Folding Mirrors and enabling auto-dip for reverse

05-15-2014 02:05 PM [Reply](#) #10

Originally Posted by **LastRinATX**

Can you just enable the auto-dip on a normal US Golf R or do I need all these mirrors and controllers? Folding is super cool, but the auto-dip I could really use.

You need the complete packet foldering mirrors and the proper door ECU.
If you are only interested about auto dip you can consider to buy the Polar Fis.

Sent from my iPhone using Tapatalk

Last edited by Stefano82; 05-15-2014 at 02:09 PM.

Reply With Quote

Cozotess18

Member

Join Date: Apr 20th, 2012
Location: Yardley, PA
Posts: 535
Vehicles: 2013 Golf R in RB

05-15-2014 02:18 PM [Reply](#) #11

That's a great write up. I bought them from Peter a few months back and haven't installed them yet. I'll need to find someone to install them since I don't have the software for coding. If anyone is willing to install, I'll pay them. 😊

Gal with a Blue R

Reply With Quote

SK VeeDubR

Member

Join Date: Apr 18th, 2008
Location: Saskatoon, SK
Posts: 1,229
Vehicles: '54 Oval, '89 Wolfsburg Cabriolet, 2013 Golf R

Sub'd for great writeup

05-15-2014 11:09 PM [Reply](#) #12

Reply With Quote

<div>GianquiMan</div> <div>Member</div> <div>Join Date: Sep 23rd, 2012</div> <div>Posts: 102</div> <div>Vehicles: 2013/Golf R/4dr RB</div>	<div>02-14-2015 04:52 PM Reply #13</div> <div>Hey OP, here's some more info for this DIY if you want to add it.</div> <div>4 door Golf Rs for some reason have 4 not 3 torx bolts holding that door panel on. The 4th one is located all the way at the bottom edge of the panel in the middle near the reflector.</div> <div>Also, I had the same problem as this guy ----> http://www.golfmk6.com/forums/showthread.php?t=86442 <-----, basically when folding the mirrors the passenger would open and then it would fold when I went to open. At the end of his thread he said he swapped the power wire on the passenger side mirror harness, but never mentioned what wire numbers they were. So after some troubleshooting I ended up swapping 14 and 15 and VOILA! Everything was working as advertised.</div> <div>Reply With Quote</div>
<div>jacktown</div> <div>Member</div> <div>Join Date: Mar 10th, 2011</div> <div>Posts: 117</div>	<div>02-14-2015 07:14 PM Reply #14</div> <div>Originally Posted by GianquiMan</div> <div>Hey OP, here's some more info for this DIY if you want to add it.</div> <div>4 door Golf Rs for some reason have 4 not 3 torx bolts holding that door panel on. The 4th one is located all the way at the bottom edge of the panel in the middle near the reflector.</div> <div>Also, I had the same problem as this guy ----> http://www.golfmk6.com/forums/showthread.php?t=86442 <-----, basically when folding the mirrors the passenger would open and then it would fold when I went to open. At the end of his thread he said he swapped the power wire on the passenger side mirror harness, but never mentioned what wire numbers they were. So after some troubleshooting I ended up swapping 14 and 15 and VOILA! Everything was working as advertised.</div> <div>You might have just made my year. I did this install on my Canadian car almost 2 years ago and both my mirrors close when the switch is set to open, and vice-versa. I trouble shooted it for 2 months and tried all kinds of codes. I've just learned to live with it ever since.</div> <div>Gonna PM you for some more details 😊</div> <div>Reply With Quote</div>
<div>GianquiMan</div> <div>Member</div> <div>Join Date: Sep 23rd, 2012</div> <div>Posts: 102</div> <div>Vehicles: 2013/Golf R/4dr RB</div>	<div>02-14-2015 08:56 PM Reply #15</div> <div>Originally Posted by jacktown</div> <div>You might have just made my year. I did this install on my Canadian car almost 2 years ago and both my mirrors close when the switch is set to open, and vice-versa. I trouble shooted it for 2 months and tried all kinds of codes. I've just learned to live with it ever since.</div> <div>Gonna PM you for some more details 😊</div> <div>PM sent</div> <div>Reply With Quote</div>
<div>Letter K</div> <div>Member</div> <div>Join Date: Jan 7th, 2011</div> <div>Location: PA</div> <div>Posts: 292</div> <div>Vehicles: 02 Titty, 12 Golf R</div>	<div>Yesterday 08:17 PM Reply #16</div> <div>I still can't find where to buy these at. Everyone just so happens to jus have them and won't provide a link.</div> <div>I own a TT and I do not support it</div> <div>Making expensive cars louder and faster</div> <div>http://www.fabspeed.com/</div> <div>Reply With Quote</div>
<div>Icer Jo</div> <div>Member</div> <div>Join Date: May 17th, 2012</div> <div>Posts: 571</div> <div>Vehicles: 2012 VW Golf R Nav & Sun</div>	<div>Today 09:16 AM Reply #17</div> <div>Originally Posted by Letter K</div> <div>I still can't find where to buy these at. Everyone just so happens to jus have them and won't provide a link.</div> <div>The Original Owners bought them from Peter/Peteski/PeterExtreme when he had about 7 sets. Second hand owners like myself bought them from/off of Original Owners. I bought mine from Twenzel since he was selling his Golf R.</div> <div>Last edited by Icer Jo; Today at 09:40 AM.</div> <div>Nadia R</div> <div>Golf R Maintenance & Reference PDF's</div> <div>Reply With Quote</div>
<div>Rzpeed</div> <div>Junior Member</div> <div>Join Date: Mar 11th, 2011</div>	<div>Today 01:02 PM Reply #18</div> <div>Originally Posted by Letter K</div>

Location: Thornhill, ON
Posts: 25

I still can't find where to buy these at. Everyone just so happens to jus have them and won't provide a link.

If you don't mind going after market, I went with these

<http://www.veedubmachine.co.uk/wing-...mp-p-2084.html>
<http://www.veedubmachine.co.uk/wing-...mp-p-2083.html>

And got the module which seems to be OEM from Aliexpress

http://www.aliexpress.com/item/Oem-5...444_5,201409_4

Been using it for a year now and no issues and love them when parking in my garage.

all said and done, this combo was around \$450 bucks... so you save probably \$300 over the OEM ones..

The only thing is the mirror doesn't dip in reverse. which is fine for me

But the cool thing is (not sure if the OEM one that others got) does this. but Mine actually can auto fold by pressing my Key Fob twice.. which is very nice..

so check these links out..

hope this helps.

Reply With Quote

[+ Reply to Thread](#)

Quick Navigation

Golf VI R

Top

[« Previous Thread](#) | [Next Thread »](#)

[Home](#) [Forum](#) [VW Model-Specific Forums](#) [Golf VI R](#) [DIY: Installing Auto Folding Mirrors and enabling auto-dip for reverse](#)

Posting Permissions

You may post new threads
You may post replies
You may not post attachments
You may edit your posts

[BB code](#) is On
[Smilies](#) are On
[\[IMG\]](#) code is On
[\[VIDEO\]](#) code is On
HTML code is Off

[Forum Rules](#)



[Contact Us](#) [Archive](#) [Privacy Statement](#) [Terms of Service](#) [Top](#)

All times are GMT -4. The time now is 01:05 PM.

Powered by [vBulletin®](#) Version 4.2.2
Copyright © 2015 vBulletin Solutions, Inc. All rights reserved.

Digital Point modules: [Sphinx-based search](#)