

[+ Reply to Thread](#)

Results 1 to 35 of 73

Page 1 of 3

[1](#) [2](#) [3](#) [Last](#)

Thread: DIY: Mirror puddle light installation

[Thread Tools](#) [Search Thread](#) [Rate This Thread](#) [Display](#)

VW Pfeffer

Member



Join Date: Aug 10th, 2002
Location: Stanwood, Wa
Posts: 393
Vehicles: 2012 Golf R

☐ DIY: Mirror puddle light installation

07-08-2012 03:22 PM

[Reply](#)

#1



I'll start by thanking the contributors to the various Volkswagen forums. I would not have attempted this without their contributions. Most of the photos in this are my own, but I have borrowed from others and give credit and links to the posts of origin.

This thread was a big help <http://forums.vwvortex.com/showthread.php?t=MKVI-Mirrors> Specifically ::R32 Driven, bobt2382 and Smoky_Llama's posts! Thanks guys! 🙏👍

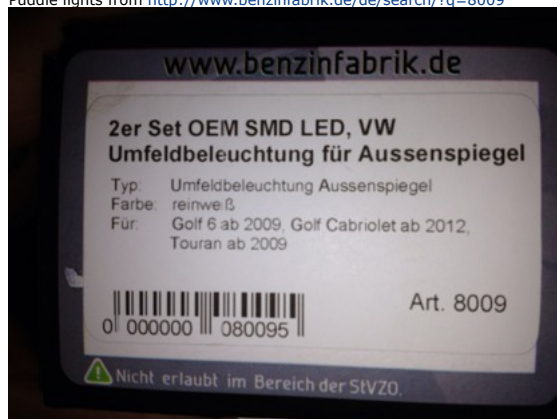
Disclaimer: Attempt at your own risk. There are several opportunities to screw up your car along the way. Pay a specialist to do it if you don't know what you're doing.

Tools I used:

VCDS for coding
Dremel or drill
Razor knife with new blades
Torx bits of various sizes
M8 triple square bit to remove the mirror to facilitate wiring
Non-marring panel removal tools
flashlight
solder and gun
shrink tubing
Heat gun
Wire strippers/cutters
Sand paper

Parts:

Puddle lights from <http://www.benzinfabrik.de/de/search/?q=8009>



VW repair wire: 000979018E

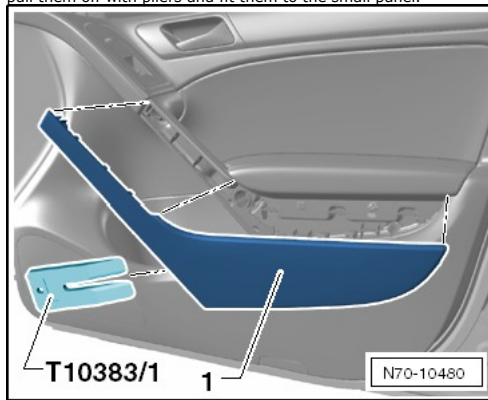


VW cloth tape: 000979950
Electrical wire (about four feet)

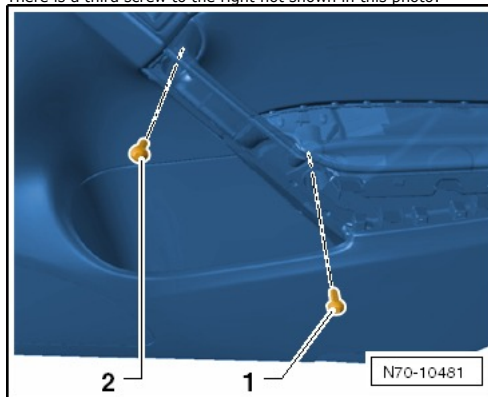
Start by taking off the interior door panel and disassembling the mirror housing:

Photo credit to Cartman at <http://vw-golfclub.ru/forum/showthread.php?t=17292>

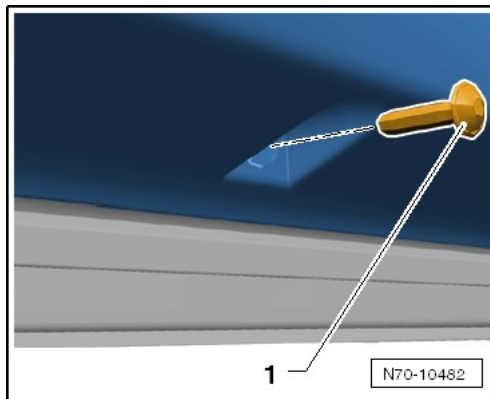
Make sure the metal clips came off with this small panel. Sometimes they detach and remain on the larger panel. It's not a big deal as you can pull them off with pliers and fit them to the small panel.



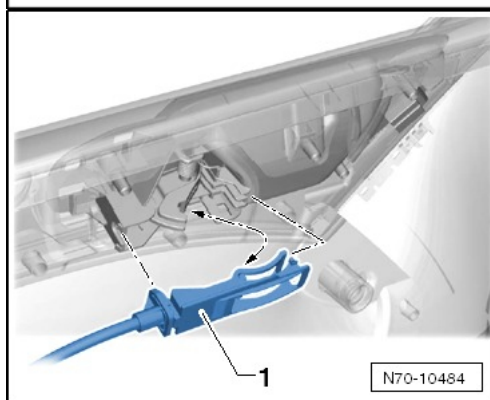
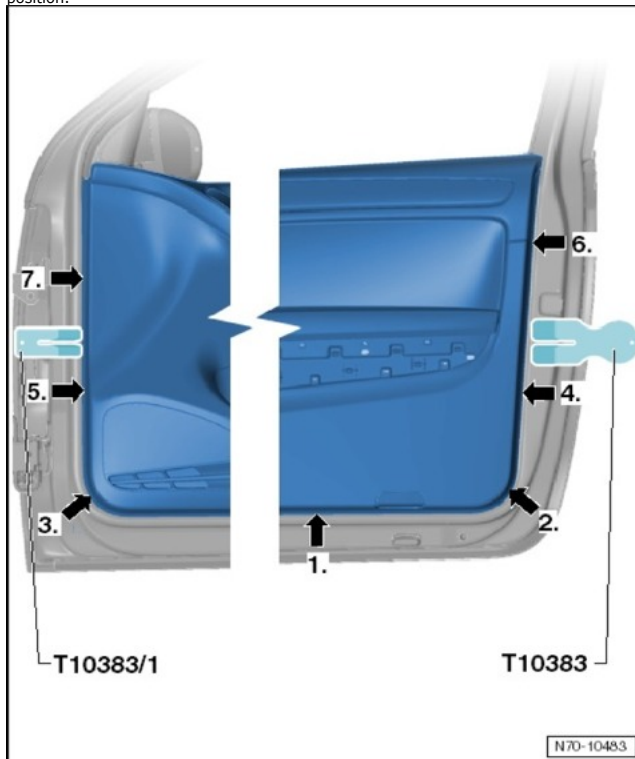
There is a third screw to the right not shown in this photo:



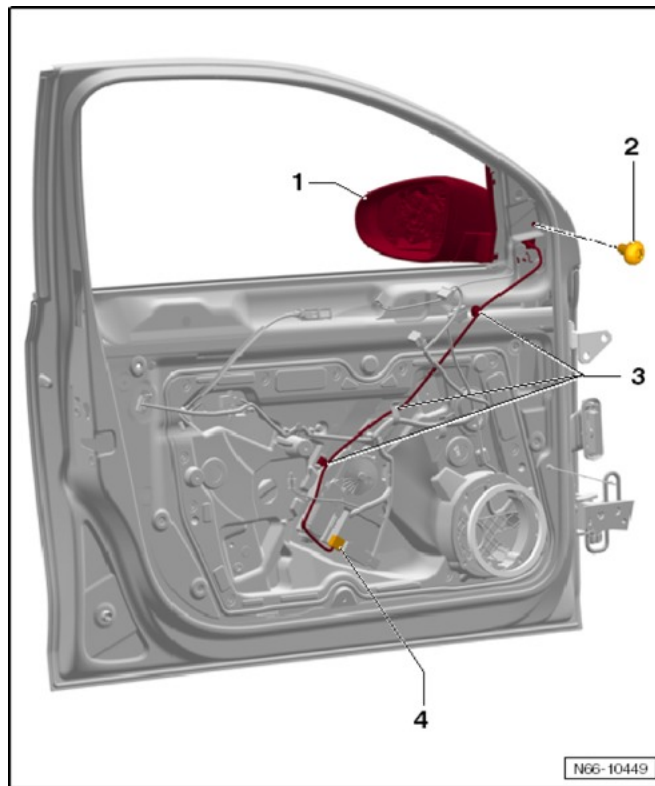
This screw is at the bottom center of the door panel:



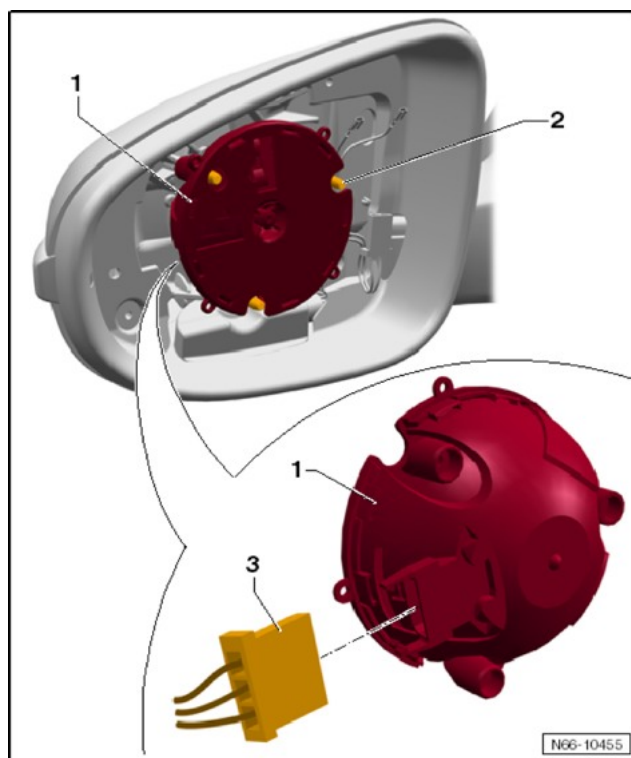
This is where the flashlight comes in handy. Pop the clips off in the numbered sequence. #1 is actually the screw you removed in the previous photo, not a clip. So, #2 is actually the first clip you need to pop. I laid on my back and shined the light through the gap to guide the trim removal tool under each clip. Once you get the bottom two off, you can widen the gap to see the next two. The clips on the hinge side of the door are the most difficult to see. Trust me, you can see all them while looking up from the floor. Once the panel is completely off, check to see that all off the clips have opened up. They can detach from the metal in the locked position. You'll have a hard time getting it back on with them in the locked position.



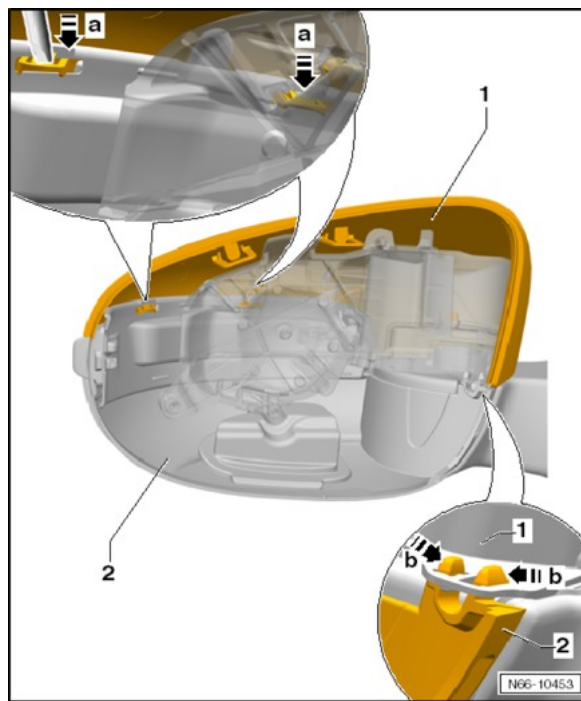
This is just a good photo of the wire run. You don't need to remove the bolt holding the mirror in place yet. That comes later.



SKIP THIS STEP. It's not necessary to remove the motor.

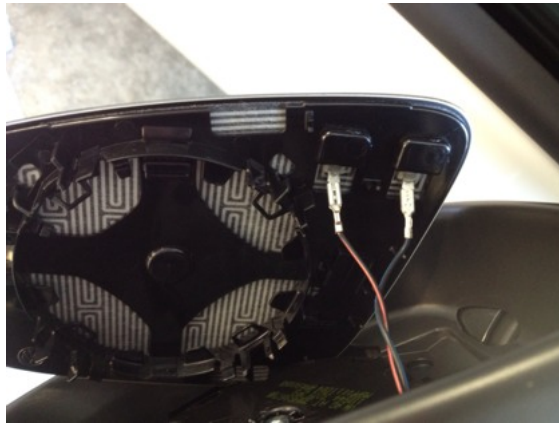


Continue:



Here are a few of my own photos. This was a scary moment for me but the mirrors popped out fairly easily. Make a note of how the wires connect to the mirror, I'm not sure if it matters.





Now is the time to remove the mirror housing. Start by removing the tweeter:



This came off with the tweeter housing. Just peel it out and stick it back in the hole. 🌱



Then use the triple square to remove the mirror bolt:



Once off, pull back the sound insulation to see how the factory wiring is routed.



Cutting the hole:

Score the factory line with a new razor blade before starting your Dremel/drill work. It will help with the finishing work. You don't have to go too deep. 😊 I'm right handed and kept the blade to the left of the factory cut. That way, if you slip it will only scratch the area being removed later.



Now drill out the inner portion. Leave a small buffer to clean up with the razor knife (about 1/8 to 1/4 inch). Start in the middle and work your way out. You can shave off the the remaining plastic in nice thin slices as you work your way to the edge. The scoring you did earlier will act as a natural safety guide for the blade. The blade will actually "find" the line and prevent you from cutting too much.



Finish the edge with the razor knife and sand paper. Wrap the sand paper around a small screwdriver to clean up the corners.



If all goes to plan the light should snap into place.

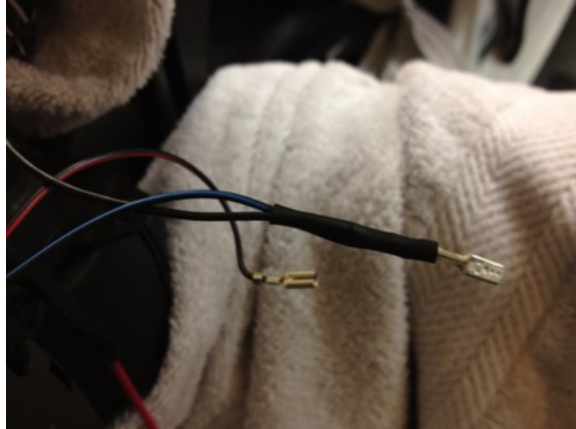
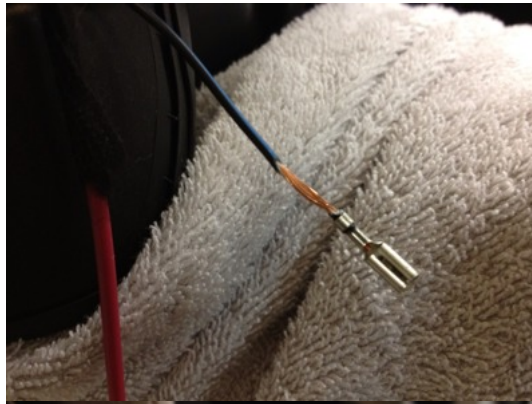


Wiring the light:

Ground wire first. Cut off the connector the light came with as close to the connector as possible and solder a 5" wire onto the gray wire. Cover with shrink tubing. This will connect to the blue and black mirror ground wire.



I carefully removed some of the insulation around the factory ground wire to solder to. Don't forget to slide the shrink tubing over the wire prior to soldering!

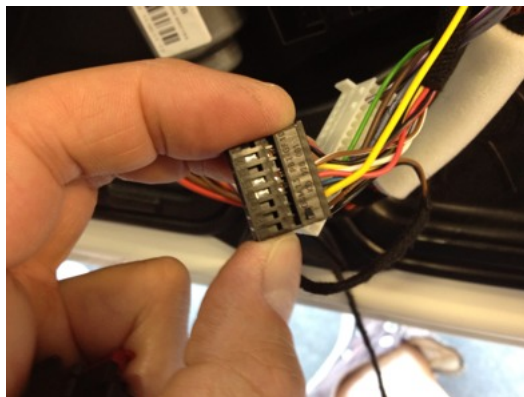


Running the 12V wire:

Cut a wire that is long enough to go from the factory door connector to the mirror cutout. Wrap the majority of it in cloth tape. Install it following the path of the factory wiring.



Remove the 16-pin lower door connector and then separate the inner housing to insert the repair wire into slot 10. I used a pointy thingy to fully seat the repair wire into the slot.



Once the repair wire is in place, route it along the factory harness to meet up with the wire you ran from the mirror. Obviously you need to cut the factory repair wire in half. You will use the other half on the other door. Solder the two together and cover in shrink tubing.



Now solder the power line to the light and cover in shrink tubing. Fill the light hole with silicon. You can stuff the shrink tubing into the light housing first, which I should have done in the first place.

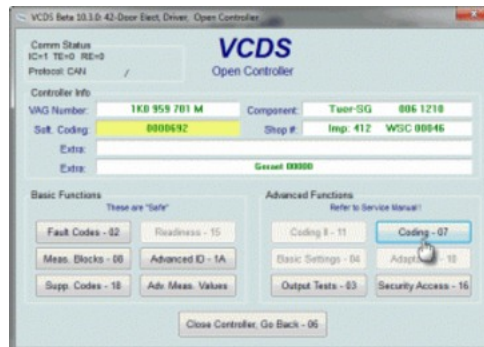


Coding:

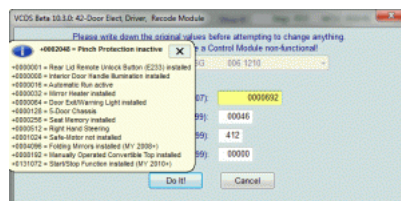
Credit to: www.my-gti.com/2084/adding-door-puddle-lights-to-the-Volkswagen-golf-and-jetta

Mine looked a little different but adding 2 to the existing code will activate the puddle lights. This has to be done to both doors.

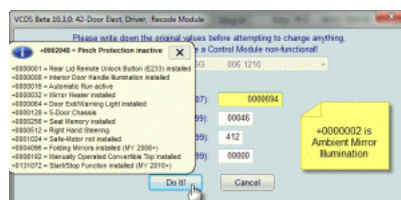
Open the door controller (42 for driver's door and 52 for passenger and select "coding - 07".



Make a note of the coding value. Write it down!



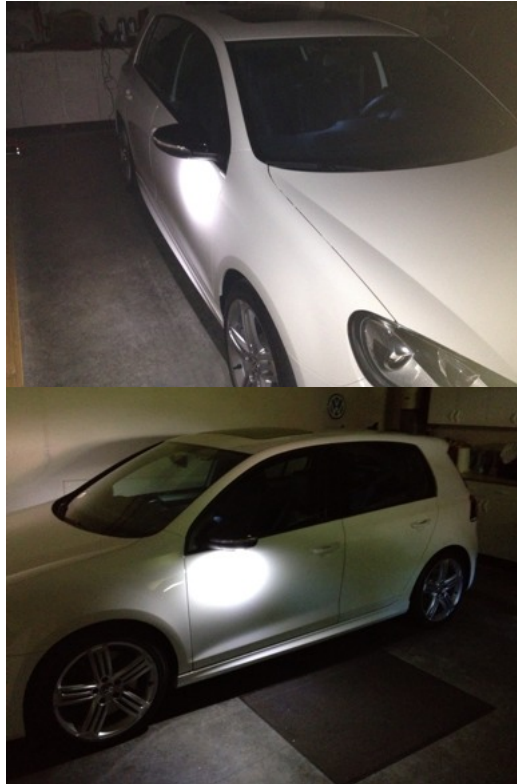
Add 2 to the coding value and select "Do It!" to save. (To save questions later, you literally change the number to equal the existing code +2)



Select "Close Controller" to exit.



That should do it. Check the lights to see if they work. They will come on when you unlock the car and shut off when you lock it. If they work, bolt everything back together.



Bonus round: If your going to do this install, you should seriously consider adding door warning lights at the same time. Bold-Sport offers a complete OEM kit and installation instructions. You'll want to add the optional 3D LED light upgrade at the same time because the OEM bulbs are too dim to be useful. The LED upgrade is a drop down menu on the door warning light order page. You'll notice that the puddle lights and door warning lights plug into different door wiring harnesses and require VAG-COM coding.

http://www.bold-sport.com/store/index.php?product_id=61

This photo shows the OEM bulbs. I upgraded later.



I installed them on all four doors. The rear door panels come off in a similar way as the front panels.

Last edited by VW Pfeffer; 07-14-2012 at 08:34 PM.



Reply With Quote |

35mphgolf

Member

Join Date: Jun 1st, 2008
Posts: 275
Vehicles: 2004 BMW 330i ZHP
2013 BGM Golf TDI 6sp

07-08-2012 04:15 PM [Reply](#) #2

Awesome write up! I just cleaned my car the other day and noticed the cutout for the puddle lights.

Also the link for the lights has 1 too many Zs I believe. Here is the link I went to:
<http://www.benzinfabrik.de/de/search/?q=8009>

Did you get these shipped stateside?



Reply With Quote |

VW Pfeffer

Member



Join Date: Aug 10th, 2002
Location: Stanwood, Wa
Posts: 393
Vehicles: 2012 Golf R

07-08-2012 04:46 PM [Reply](#) #3

Originally Posted by **35mphgolf**

Awsome write up! I just cleaned my car the other day and noticed the cutout for the puddle lights.

Also the link for the lights has 1 too many Zs I believe. Here is the link I went to:
<http://www.benzinfabrik.de/de/search/?q=8009>

Did you get these shipped stateside?

Thanks! I fixed the link. I bought them from a vortex member that had them shipped stateside but didn't want to do the installation.

Last edited by VW Pfeffer; 07-08-2012 at 04:50 PM.



Reply With Quote |

35mphgolf

Member

Join Date: Jun 1st, 2008
Posts: 275
Vehicles: 2004 BMW 330i ZHP
2013 BGM Golf TDI 6sp

07-08-2012 04:52 PM [Reply](#) #4

Hmm is there a vw part number that came with the lights/box?
Couldn't find anything on the site!



Reply With Quote |

willbarnes2

Member



Join Date: Sep 19th, 2007
Location: NN,VA
Posts: 2,351
Vehicles: 2012 Golf R 2008 R32
2013 Tiguan

☐ FV-QR

07-08-2012 05:05 PM [Reply](#) #5

Nice writeup
On my list of to do's



Reply With Quote |

VW Pfeffer

Member



Join Date: Aug 10th, 2002
Location: Stanwood, Wa
Posts: 393
Vehicles: 2012 Golf R

07-08-2012 05:21 PM [Reply](#) #6

Originally Posted by **35mphgolf**

Hmm is there a vw part number that came with the lights/box?
Couldn't find anything on the site!

No, there weren't any VW part numbers on it.



Reply With Quote |

blackdemonGTI18T

Member



Join Date: Oct 15th, 2001
Location: NH
Posts: 425
Vehicles: 2012 Toyota Tacoma
TRD Offroad

07-08-2012 05:25 PM [Reply](#) #7

is soldering the best method for a secure connection? the reason i ask is because i worked for VW as a parts manager and remember any wiring repairs were always performed using the VW repair wires and the appropriate heat shrink connector. i was told by the techs that soldering is NOT recommended by VW. any thoughts?

89 GLI 16V, 98 GTI, 99.5 GTI VR6, 01 GTI 18T, 03 GTI 18T, 04 R32, 07 TACOMA TRD OffRoad, 08 A4Q 2.0T, 83 GTI, 12 GOLF R, 12 Tacoma TRD Offroad



Reply With Quote |

<div> <div>Peezy_R</div> <div>Junior Member</div> <div> </div> <div> <div>Join Date:</div> <div>May 3rd, 2012</div> </div> <div> <div>Location:</div> <div>Los Angeles</div> </div> <div> <div>Posts:</div> <div>40</div> </div> <div> <div>Vehicles:</div> <div>2012 VW Golf R</div> </div> </div>	<div>07-08-2012 05:57 PM</div> <div>Reply</div> <div>#8</div> <div>Nice mod</div> <div>Sent from my iPhone using Tapatalk</div> <div> </div> <div> <div> Reply With Quote </div> <div> </div> </div>
<div> <div>VW Pfeffer</div> <div>Member</div> <div> </div> <div> <div>Join Date:</div> <div>Aug 10th, 2002</div> </div> <div> <div>Location:</div> <div>Stanwood, Wa</div> </div> <div> <div>Posts:</div> <div>393</div> </div> <div> <div>Vehicles:</div> <div>2012 Golf R</div> </div> </div>	<div>07-08-2012 06:10 PM</div> <div>Reply</div> <div>#9</div> <div> <div> Originally Posted by blackdemonGTI18T </div> <div> <i>is soldering the best method for a secure connection? the reason i ask is because i worked for VW as a parts manager and remember any wiring repairs were always performed using the VW repair wires and the appropriate heat shrink connector. i was told by the techs that soldering is NOT recommended by VW. any thoughts?</i> </div> <div>Any way you go about is is going to create the need to join bare wires. The repair wire is not long enough and has the same harness connector on both ends. If you dont solder you're left with using a wire nut, in line crimp fitting or making a wish. I chose solder. 😊</div> <div>Last edited by VW Pfeffer; 07-08-2012 at 06:15 PM.</div> <div> </div> <div> <div> Reply With Quote </div> <div> </div> </div> </div>
<div> <div>sc0ttyb</div> <div>Member</div> <div> </div> <div> <div>Join Date:</div> <div>Apr 11th, 2007</div> </div> <div> <div>Location:</div> <div>PHX</div> </div> <div> <div>Posts:</div> <div>695</div> </div> <div> <div>Vehicles:</div> <div>2013 Ibis White TTRS</div> </div> </div>	<div>07-08-2012 06:47 PM</div> <div>Reply</div> <div>#10</div> <div>As long as you know how to solder properly and can make good, solid connections it shouldn't be a problem.</div> <div> </div> <div> <div> Reply With Quote </div> <div> </div> </div>
<div> <div>Optimus812</div> <div>Member</div> <div> </div> <div> <div>Join Date:</div> <div>May 5th, 2012</div> </div> <div> <div>Posts:</div> <div>177</div> </div> <div> <div>Vehicles:</div> <div>2012 Audi TTRS</div> </div> </div>	<div>07-08-2012 10:02 PM</div> <div>Reply</div> <div>#11</div> <div>Great write-up! I'm going to give it a try, just ordered the lights from http://www.benzinfabrik.de. Doesn't seem to bad, except for the cutting of the plastic on the housing.</div> <div>Dave</div> <div> <div>2014 Jaguar F Type</div> <div>2012 Ibis White Audi TTRS --SOLD</div> <div>1997 Toyota Supra RSP Single Turbo -- SOLD</div> </div> <div> </div> <div> <div> Reply With Quote </div> <div> </div> </div>
<div> <div>Smoky_Llama</div> <div>Member</div> <div> </div> <div> <div>Join Date:</div> <div>Nov 21st, 2005</div> </div> <div> <div>Location:</div> <div>Bellevue, Nebraska</div> </div> <div> <div>Posts:</div> <div>5,041</div> </div> <div> <div>Vehicles:</div> <div>12' Golf R</div> </div> </div>	<div>07-08-2012 10:45 PM</div> <div>Reply</div> <div>#12</div> <div>Great write up, glad we could help!👍</div> <div>Need Vag-Com in Eastern Nebraska and Western Iowa? Send me a PM.👍</div> <div>Instagram @smokey_llama</div> <div> </div> <div> <div> Reply With Quote </div> <div> </div> </div>
<div> <div>Cortexiphan</div> <div>Member</div> <div> </div> <div> <div>Join Date:</div> <div>Mar 1st, 2010</div> </div> <div> <div>Location:</div> <div>South East, MI</div> </div> <div> <div>Posts:</div> <div>4,807</div> </div> </div>	<div>07-08-2012 10:45 PM</div> <div>Reply</div> <div>#13</div> <div>I had the OEM parts laying around to do this to my MkIV R32 but sold it before I got to it.</div> <div>Definitely doing this on the Golf R.</div> <div>Thanks for the write-up!</div> <div>-Tim</div>

Vehicles: Golf R

[Reply With Quote](#)




10

Join Date: Aug 10th, 2002
Location: Stanwood, Wa
Posts: 393
Vehicles: 2012 Golf R

07-08-2012 11:36 PM [Reply](#) #14

Thanks for your help Smoky!! I adjusted the acknowledgements. 😊

Last edited by VW Pfeffer; 07-09-2012 at 01:34 AM.


  Reply With Quote | 

[Reply With Quote](#)






Join Date: Jul 28th, 2009
Location: San Diego & 29 Palms
CA
Posts: 330
Vehicles: 2010 Golf TDI CW 4DR
6MT

07-08-2012 11:42 PM [Reply](#) #15

 Glad you got'em installed! They look great. (Now I don't have to take pictures!). One quick question. I had to remove some material from the top of the LED modules so the mirror assy frame would clear the LED module. Did you do the same or did yours clear the LED module? I'll attempt to get a pic of what I'm asking.

These really light up the side of the vehicle at night.

Bob

  Reply With Quote | 

[Reply With Quote](#)

Join Date: Aug 10th, 2002
Location: Stanwood, Wa
Posts: 393
Vehicles: 2012 Golf R

07-09-2012 12:54 AM [Reply](#) #16

Bob

[Reply With Quote](#)



Join Date: Jul 28th, 2009
Location: San Diego & 29 Palms
CA
Posts: 330
Vehicles: 2010 Golf TDI CW 4DR
GMT

07-09-2012 01:18 AM [Reply](#) #17

I didn't have to remove any from the top of the LED module. Everything cleared okay. Are yours fully seated in the cutout and flush on the outside of the mirror housing?

Great write up on your part! 😊

[Reply With Quote](#)



Join Date: Oct 9th, 2001
Location: Austin, TX formally Bay Area, CA
Posts: 1,209
Vehicles: Audi D2 S8...

07-09-2012 02:38 AM [Reply](#) #18

Current: Golf-R Rising Blue 4-door loaded, Mazda MX-5, several mods #333
Former: Audi D2 S8 Ming Blue
Former: VW mkV GTi United Gray, B6 A4 Avant 1.8TQ Atlas Gray
B5 A4 1.8TQM Santorin Blue J31-K04 Beauty
B5.5 Passat TDi, Euro model...



Reply With Quote |

db252 ▾

Junior Member

Join Date: Nov 13th, 2010
Posts: 41
Vehicles: 2012 Golf TDI - 2005 Jetta TDI - 2003 Jetta TDI - 2001 Golf TDI

07-09-2012 07:00 AM #19

Very nice write up and the install looks so factory so nice job on that. I want to do this mod but not sure how much I'll get out of it since I have KESSEY and rarely take the key out my pocket. I am curious though, do the lights come on when you exit the car and stay on for 30 seconds or so after shutting the doors as long as you don't lock them?

2012 Golf TDI Manual Tech
2005 Jetta TDI Manual
2003 Jetta TDI Manual
2001 Golf TDI Auto



Reply With Quote |

bobt2382 ▾

Member



Join Date: Jul 28th, 2009
Location: San Diego & 29 Palms CA
Posts: 330
Vehicles: 2010 Golf TDI CW 4DR 6MT

07-09-2012 11:17 AM #20

Originally Posted by db252

I am curious though, do the lights come on when you exit the car and stay on for 30 seconds or so after shutting the doors as long as you don't lock them?

Yes, they stay on for 30 seconds if you don't immediately lock the car. Once they go off, you can hit the unlock button and they will come back on for 30 seconds.



Reply With Quote |

VW Pfeffer ▾

Member



Join Date: Aug 10th, 2002
Location: Stanwood, Wa
Posts: 393
Vehicles: 2012 Golf R

07-09-2012 11:24 AM #21

Originally Posted by db252

Very nice write up and the install looks so factory so nice job on that. I want to do this mod but not sure how much I'll get out of it since I have KESSEY and rarely take the key out my pocket. I am curious though, do the lights come on when you exit the car and stay on for 30 seconds or so after shutting the doors as long as you don't lock them?

Yes, they come on and stay on once you open any door, including the hatch, and stay on for a while or until you lock it. I have KESSEY too so I probably won't realize how useful it is until this fall/winter.



Reply With Quote |

.:R Driven ▾

Member



Join Date: Dec 6th, 2011
Location: DC-MD-VA
Posts: 522
Vehicles: AE1323 GTII.:R DRIVEN GOLF

07-09-2012 12:24 PM #22

Originally Posted by VW Pfeffer



I'll start by thanking the contributors to the various Volkswagen forums. I would not have attempted this without their contributions. Most of the photos in this are my own, but I have borrowed from others and give credit and links to the posts of origin.

This thread was a big help <http://forums.vwvortex.com/showthread.php?t=MKVI-Mirrors> Specifically .:R32 Driven, bobt2382 and Smoky_Llama's posts! Thanks guys!

Disclaimer: Attempt at your own risk. There are several opportunities to screw up your car along the way. Pay a specialist to do it if you don't know what you're doing.

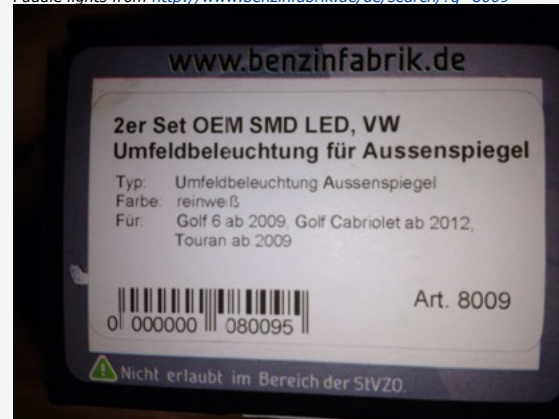
Tools I used:

*VCDS for coding
Dremel or drill
Razor knife with new blades*

Torx bits of various sizes
 M8 triple square bit to remove the mirror to facilitate wiring
 Non-marring panel removal tools
 flashlight
 solder and gun
 shrink tubing
 Heat gun
 Wire strippers/cutters
 Sand paper

Parts:

Puddle lights from <http://www.benzinfabrik.de/de/search/?q=8009>



VW repair wire: 000979018E

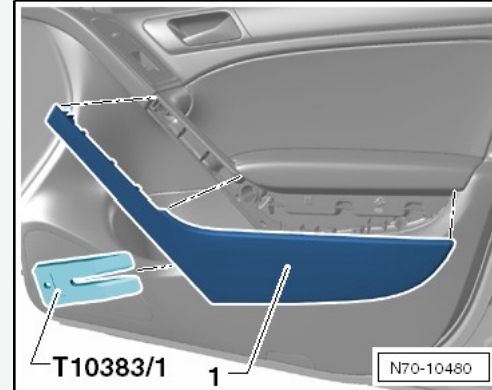


VW cloth tape: 000979950
 Electrical wire (about four feet)

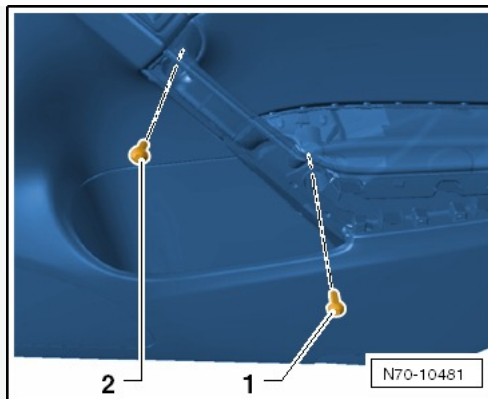
Start by taking off the interior door panel and disassembling the mirror housing:

Photo credit to Cartman at <http://vw-golfclub.ru/forum/showthread.php?t=17292>

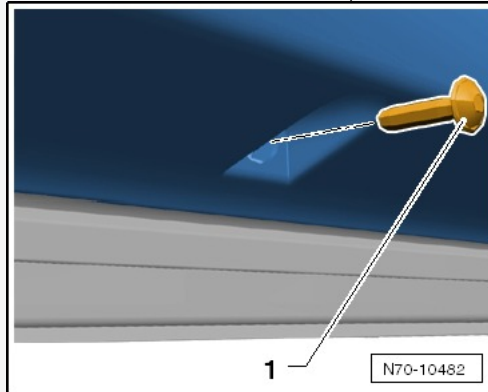
Make sure the metal clips came off with this small panel. Sometimes they detach and remain on the larger panel. It's not a big deal as you can pull them off with pliers and fit them to the small panel.



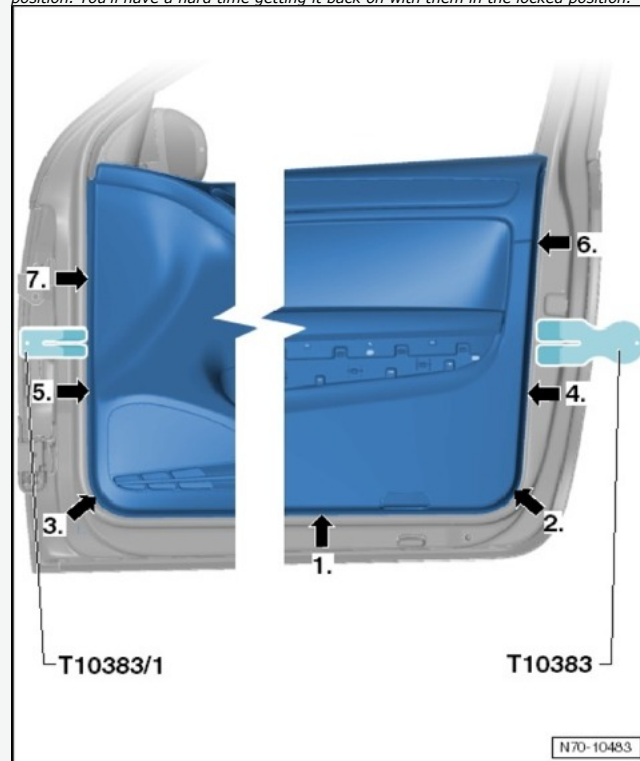
There is a third screw to the right not shown in this photo:

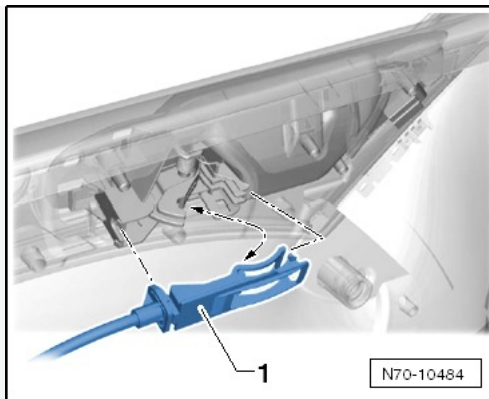


This screw is at the bottom center of the door panel:

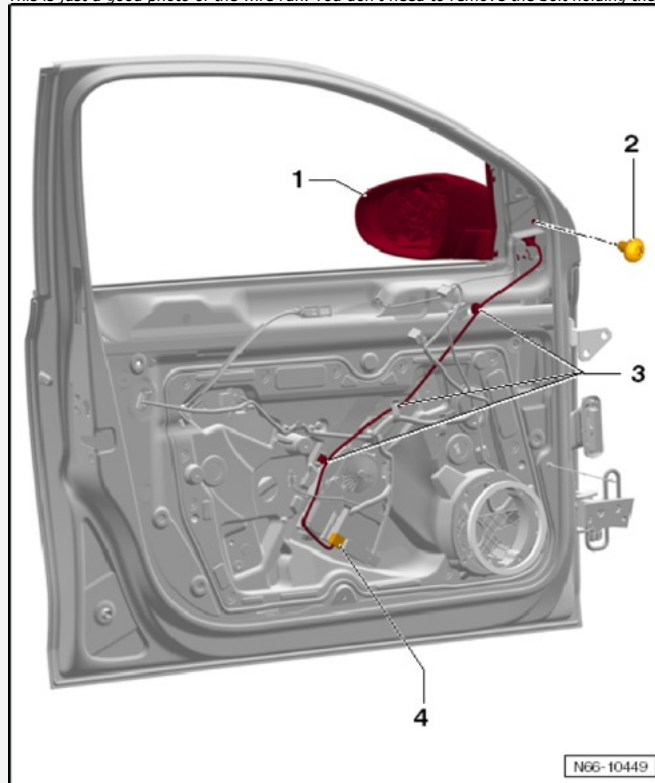


This is where the flashlight comes in handy. Pop the clips off in the numbered sequence. #1 is actually the screw you removed in the previous photo, not a clip. So, #2 is actually the first clip you need to pop. I laid on my back and shined the light through the gap to guide the trim removal tool under each clip. Once you get the bottom two off, you can widen the gap to see the next two. The clips on the hinge side of the door are the most difficult to see. Trust me, you can see all them while looking up from the floor. Once the panel is completely off, check to see that all off the clips have opened up. They can detach from the metal in the locked position. You'll have a hard time getting it back on with them in the locked position.

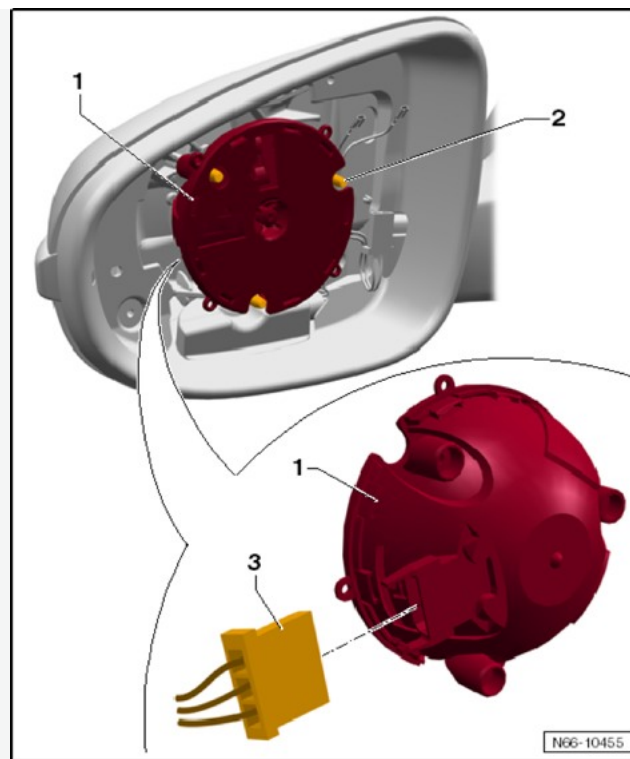




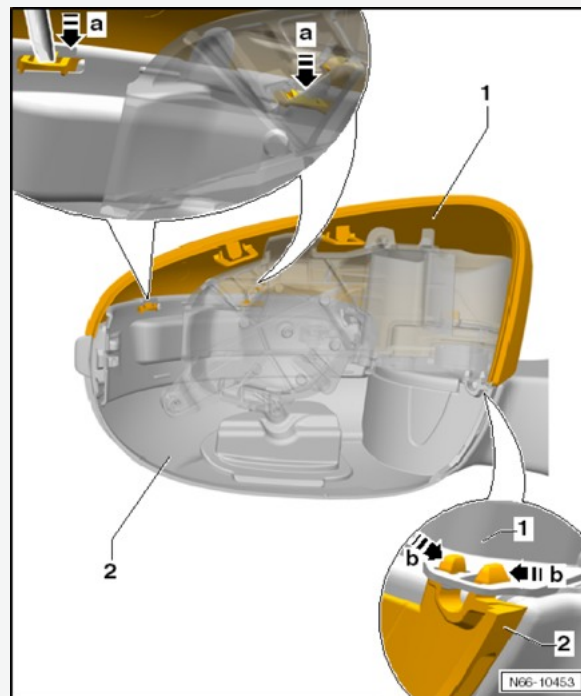
This is just a good photo of the wire run. You don't need to remove the bolt holding the mirror in place yet. That comes later.



SKIP THIS STEP. It's not necessary to remove the motor.



Continue:



Here are a few of my own photos. This was a scary moment for me but the mirrors popped out fairly easily. Make a note of how the wires connect to the mirror, I'm not sure if it matters.



Now is the time to remove the mirror housing. Start by removing the tweeter:





This came off with the tweeter housing. Just peel it out and stick it back in the hole. 🧐



Then use the triple square to remove the mirror bolt:



Once off, pull back the sound insulation to see how the factory wiring is routed.



Cutting the hole:

Score the factory line with a new razor blade before starting your Dremel/drill work. It will help with the finishing work. You don't have to go too deep. 😊 I'm right handed and kept the blade to the left of the factory cut. That way, if you slip it will only scratch the area being removed later.



Now drill out the inner portion. Leave a small buffer to clean up with the razor knife (about 1/8 to 1/4 inch). Start in the middle and work your way out. You can shave off the remaining plastic in nice thin slices as you work your way to the edge. The scoring you did earlier will act as a natural safety guide for the blade. The blade will actually "find" the line and prevent you from cutting too much.



Finish the edge with the razor knife and sand paper. Wrap the sand paper around a small screwdriver to clean up the corners.



If all goes to plan the light should snap into place.

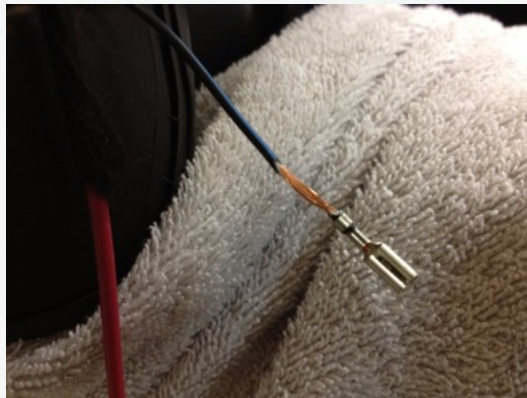


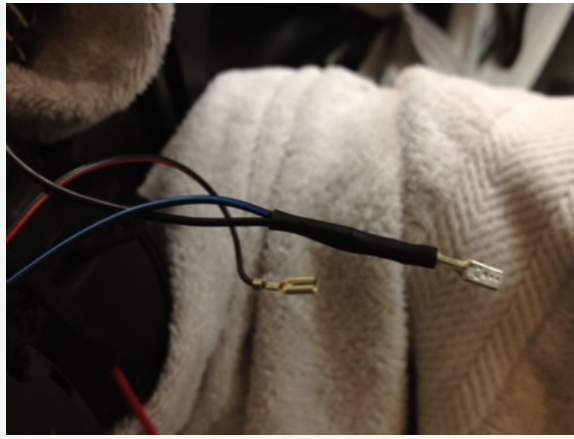
Wiring the light:

Ground wire first. Cut off the connector the light came with as close to the connector as possible and solder a 5" wire onto the gray wire. Cover with shrink tubing. This will connect to the blue and black mirror ground wire.



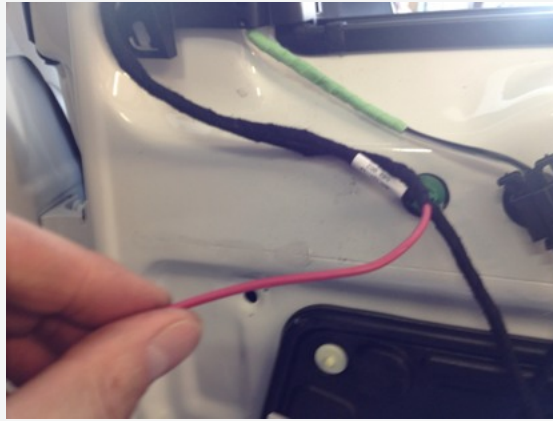
I carefully removed some of the insulation around the factory ground wire to solder to. Don't forget to slide the shrink tubing over the wire prior to soldering!



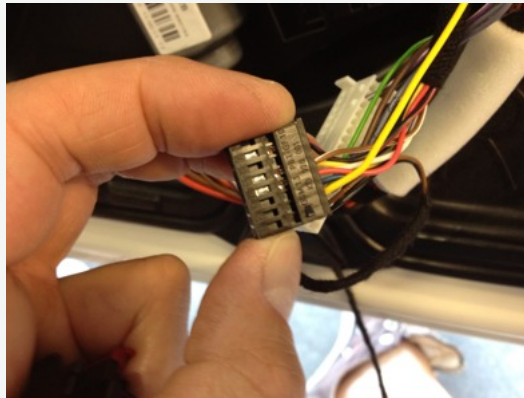


Running the 12V wire:

Cut a wire that is long enough to go from the factory door connector to the mirror cutout. Wrap the majority of it in cloth tape. Install it following the path of the factory wiring.



Remove the 16-pin lower door connector and then separate the inner housing to insert the repair wire into slot 10. I used a pointy thingy to fully seat the repair wire into the slot.



Once the repair wire is in place, route it along the factory harness to meet up with the wire you ran from the mirror. Obviously you need to cut the factory repair wire in half. You will use the other half on the other door. Solder the two together and cover in shrink tubing.



Now solder the power line to the light and cover in shrink tubing. Fill the light hole with silicon. You can stuff the shrink tubing into the light housing first, which I should have done in the first place.

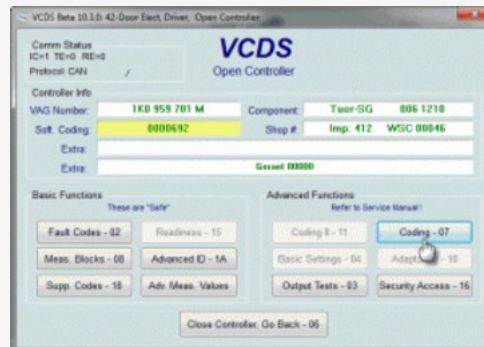


Coding:

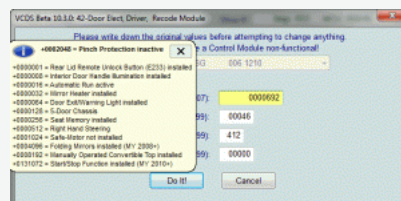
Credit to: www.my-gti.com/2084/adding-door-puddle-lights-to-the-Volkswagen-golf-and-jetta

Mine looked a little different but adding 2 to the existing code will activate the puddle lights. This has to be done to both doors.

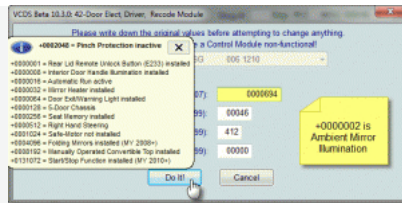
Open the door controller (42 for driver's door and 52 for passenger and select "coding - 07".



Make a note of the coding value. Write it down!



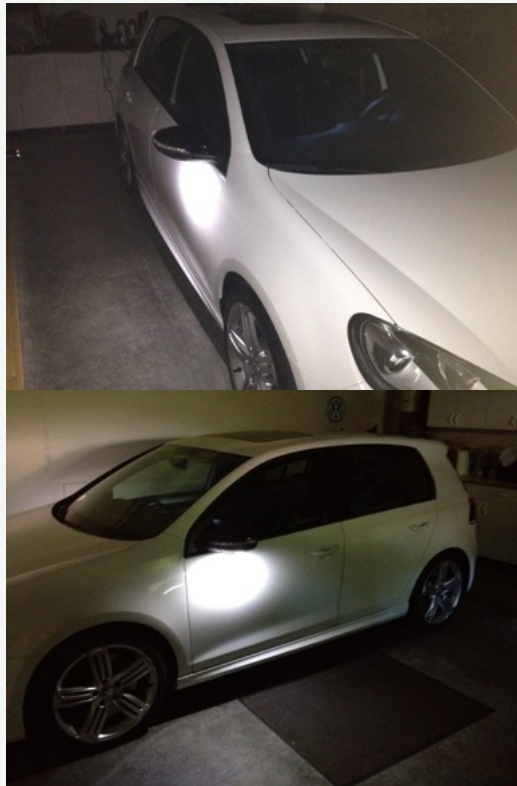
Add 2 to the coding value and select "Do It!" to save. (To save questions later, you literally change the number to equal the existing code +2)



Select "Close Controller" to exit.



That should do it. Check the lights to see if they work. They will come on when you unlock the car and shut off when you lock it. If they work, bolt everything back together.



You beat me to it 🙌 Great write up 📄

REVO|GOLF R N86710



Reply With Quote | +

db252

Junior Member

Join Date: Nov 13th, 2010
Posts: 41

Vehicles: 2012 Golf TDI - 2005
Jetta TDI - 2003 Jetta TDI - 2001 Golf
TDI

07-09-2012 12:48 PM

Reply

#23

Originally Posted by **VW Pfeffer**

Yes, they come on and stay on once you open any door, including the hatch, and stay on for a while or until you lock it. I have KESSEY too so I probably won't realize how useful it is until this fall/winter.

That's really good to know in the sense it also works as a coming home feature for when I get in the garage at night as well as a leaving home if I just hit the unlock button before walking into the garage. I know I can program a manual coming home through vcds but I hate flashing my HID's

to make it happen.

Awesome. I am gonna order them and do it; so again, very nice right up and thanks for the directions.

2012 Golf TDI Manual Tech
2005 Jetta TDI Manual
2003 Jetta TDI Manual
2001 Golf TDI Auto



Reply With Quote |

96TL ▾

Member
Join Date: Mar 17th, 2001
Location: NYC
Posts: 115
Vehicles: 2012 Golf R

07-09-2012 12:55 PM [Reply](#) #24

I have all the parts, just haven't had the time! 🤖

I also ordered replacement LED fixtures for all of the interior LEDs from Benzinfabrik (adding rear footwell lights and door exit lights). They have some nice stuff! 🛠️



Reply With Quote |

35mphgolf ▾

Member
Join Date: Jun 1st, 2008
Posts: 275
Vehicles: 2004 BMW 330i ZHP
2013 BGM Golf TDI 6sp

07-09-2012 01:42 PM [Reply](#) #25

Is there an English translation for that site? Maybe I just missed it...



Reply With Quote |

96TL ▾

Member
Join Date: Mar 17th, 2001
Location: NYC
Posts: 115
Vehicles: 2012 Golf R

07-09-2012 01:49 PM [Reply](#) #26

Originally Posted by **35mphgolf**

Is there an English translation for that site? Maybe I just missed it...

Google Translate. 🛠️



Reply With Quote |

Alive By time ▾

Member

Join Date: Feb 2nd, 2006
Location: North San Diego
Posts: 4,835
Vehicles: 12' CW 4DR Golf [R]
(SOLD) 13' RB 4DR Golf R

07-09-2012 02:05 PM [Reply](#) #27

Awesome.

Blue One



Reply With Quote |

JustinKYC. ▾

Member

GTI
Join Date: Jul 4th, 2010
Location: Calgary, AB
Posts: 119
Vehicles: 2011 Volkswagen GTI

07-09-2012 03:21 PM [Reply](#) #28



Reply With Quote |

provenflipper ▾

Member
Join Date: Apr 21st, 2007
Location: San Diego, Ca
Posts: 527
Vehicles: '13.5 Platinum Grey GLI
Autobahn w/ Nav, '12 Black Passat 2.5
SE W/ Nav, '12 Golf R Stg 2+ (Sold)

07-09-2012 10:14 PM [Reply](#) #29

I want to do this, but it's way above my skill level.



Reply With Quote |

Peezy_R ▾

Junior Member

07-10-2012 01:09 PM [Reply](#) #30

Nice.....I'm going to add this to the Mod list

Join Date: May 3rd, 2012
Location: Los Angeles
Posts: 40
Vehicles: 2012 VW Golf R



Reply With Quote |

Smoky_Llama

Member

Join Date: Nov 21st, 2005
Location: Bellevue, Nebraska
Posts: 5,041
Vehicles: 12' Golf R

07-11-2012 02:51 AM [Reply](#) #31

Originally Posted by **provenflipper**
I want to do this, but it's way above my skill level.

Bet you it isn't.

Just keep reading through it, then go remove your mirrors just for ****s, it's pretty straight forward and this is a great DIY.

Hey mods, could we get this moved to the MKVI Golf/GTI/R DIY Threads?

Need Vag-Com in Eastern Nebraska and Western Iowa? Send me a PM.

Instagram @smokey_llama



Reply With Quote |

JosephHatfield

Member

Join Date: Sep 4th, 2011
Location: North Bethesda, MD USA
Posts: 259
Vehicles: 2000 VW Golf (Sold) | 2002 VW GTI (Sold) | 2007 VW GTI (traded) | 2012 VW Golf R

07-11-2012 07:22 AM [Reply](#) #32

Originally Posted by **provenflipper**
I want to do this, but it's way above my skill level.

That's why I sold the lights Glad they went to a good home!



Reply With Quote |

bobt2382

Member

Join Date: Jul 28th, 2009
Location: San Diego & 29 Palms CA
Posts: 330
Vehicles: 2010 Golf TDI CW 4DR 6MT

07-12-2012 12:43 AM [Reply](#) #33

PM me if you want to do this. I'm in San Diego a few times every month and can give you a hand. Takes a few hours to take the door panels off, wire it up, and do the cutouts.



Reply With Quote |

VW Pfeffer

Member

Join Date: Aug 10th, 2002
Location: Stanwood, Wa
Posts: 393
Vehicles: 2012 Golf R

07-14-2012 08:50 PM [Reply](#) #34

Originally Posted by **JosephHatfield**
That's why I sold the lights Glad they went to a good home!

Thanks for selling them to me.

I can say the are pretty useful, even with KESSEY. They really light up the garage nicely when I come home.



Reply With Quote |

quailallstar

Member

Join Date: Dec 2nd, 2001
Location: Aus Liebe zum Automobil
Posts: 8,372
Vehicles: @LuvGermanCars

07-15-2012 02:22 PM [Reply](#) #35

Great job on the insall! I think im going to spring for these and install on my CW TDI.

2011 Candy-Weiß Golf 6 2,0 6-Gang DPF TDI BLUEMOTION Technologies™ Highline 4-Türen ■ 2011 Tornadorot Jetta 6 2,5 Highline 4-Türen ■ 08 Deep Blau Perleffekt Golf 5 .:R32 3,2 DSG 4-MOTION™ 3-Türen ■ 08 Tornadorot Passat 3C Variant Highline 2,0 TFSI ■ 06 Tornadorot Golf 5 GTI 2,0 DSG TFSI 3-Türen ■ 02 Indigo Blau Perleffekt Passat 3BG Trendline 1,8T 4-Türen

« Previous Thread | Next Thread »

[Home](#) [Forum](#) [VW Model-Specific Forums](#) [Golf VI R](#) [DIY: Mirror puddle light installation](#)

Posting Permissions

You may post new threads

You may post replies

You may not post attachments

You may edit your posts

BB code is On

Smilies are On

[IMG] code is On

[VIDEO] code is On

HTML code is On

[Forum Rules](#)