

[User CP](#)[FAQ](#)[Members List](#)[Calendar](#)[New Posts](#)[Search](#) ▾[Quick Links](#) ▾[Log Out](#)**GOLFMK6**

VW GTI MKVI Forum / VW Golf R Forum / VW Golf MKVI Forum / VW GTI Forum - Golfmk6.com > Technical Topics > Cosmetic Mods
 (interior & exterior modifications)

DIY: Auto Dimming Mirror Install with Homelink

Welcome, [lateapxr](#).

You last visited: Yesterday at 04:48 PM
[Private Messages](#): Unread 0, Total 70.

[reply](#)
 Page 1 of 17 **1** 2 3 11 > Last » ▾
[View First Unread](#)[Thread Tools](#) ▾[Search this Thread](#) ▾[Rate Thread](#) ▾[Display Modes](#) ▾

12-24-2010, 10:23 AM

jbcrutch

Formula 5000
 Champion



Drives: 2011 CSG
 MK6 GTI
 Join Date: Oct 2010
 Location:
 Chattanooga, TN
 Posts: 2,605

DIY: Auto Dimming Mirror Install with Homelink

DIY for 2011 GTI and the Gentex Auto-Dimming Mirror with Homelink Install – (took me 1 hour due to a little exploring in headliner. Really a

I installed the Mito/Gentex GENK41 mirror which I purchased from www.brandnewauto.com

Here's the link to the mirror I bought: <http://www.brandnewauto.com/AUTO-DIM...-p8051612.html>

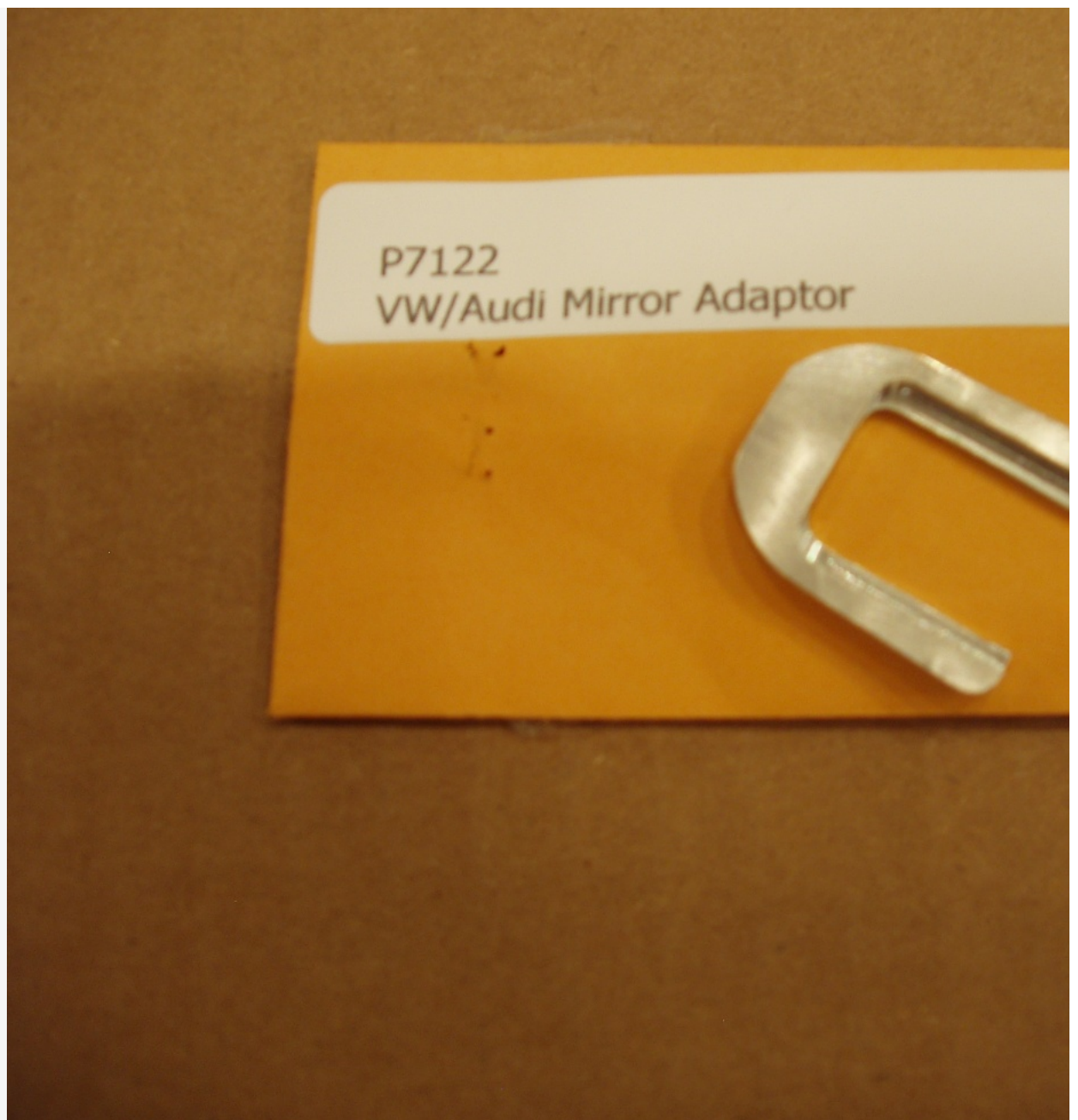
Use the coupon code **SOFF to get 5% off your order.** My cost for the mirror and VW adapter kit shipped to me was \$170.04 including sh

For this install it is important to ensure that you receive the "simple" install kit. This kit includes one wire with two hot plugs and a ground. If You also need the "long" wire cover, not the short one. My kit came with the long wire cover at no extra charge.

Kit contents:



And purchased the available VW adapter kit, Pt. # 50-P7122 from them too: <http://www.brandnewauto.com/Shop/Con...page/VWadapter>



It comes with an allen screw and small brass insert:



I did not disconnect the battery during any of this process. I just made sure the doors were closed during the install (as if that might do any g

Obligatory disclaimer: I am not responsible for damage to your GTI if you choose to follow this install. It worked for me. Attempt at your own

First things first, here's the mirror you will be removing. Say goodbye:



Tilt it downward and pop it off the stem holding it to the windshield. It's OK to use a bit of force. It's not held on that strongly.

The back of the mirror looks like this, so you know what you're dealing with:



Here's what you are left with on the windshield:



To remove the mirror stem I used a strap wrench:



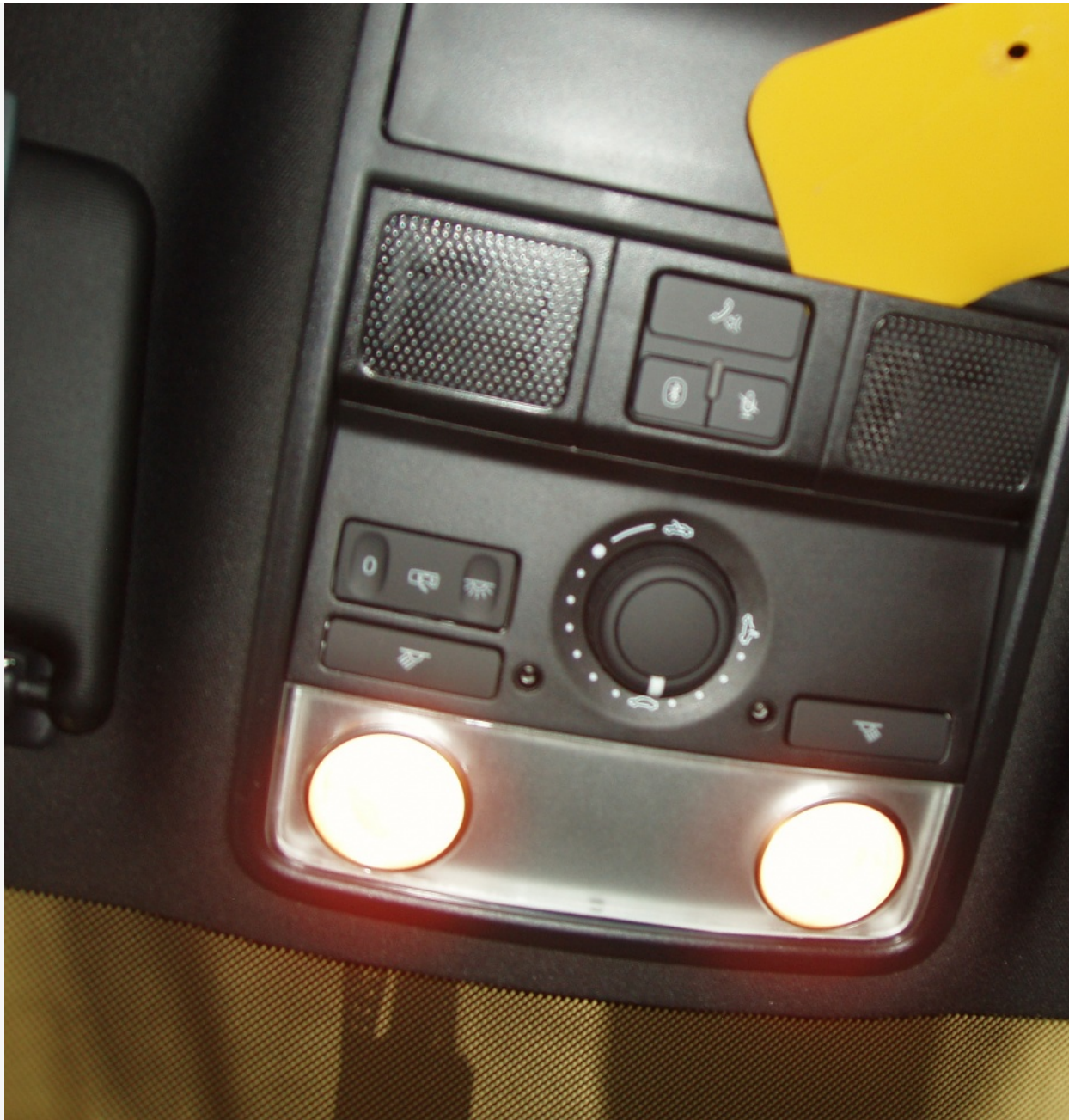
You can go either clockwise or counterclockwise to remove it. It does not matter. I went counterclockwise. ¼ turn and it will pop right off, leav



This is what you will mount the new mirror to using the VW adaptor. I painted the horseshoe shaped piece black:



Once you have the mirror out of your way its time to go exploring for power in the headliner. Map lights seem the obvious place, so pop off the used, a plastic bondo repair tool:



It will release rather easily with very little force. Once it is loose, simply fold it towards the mirror and it will hang on a hinge of sorts. Once h
off.



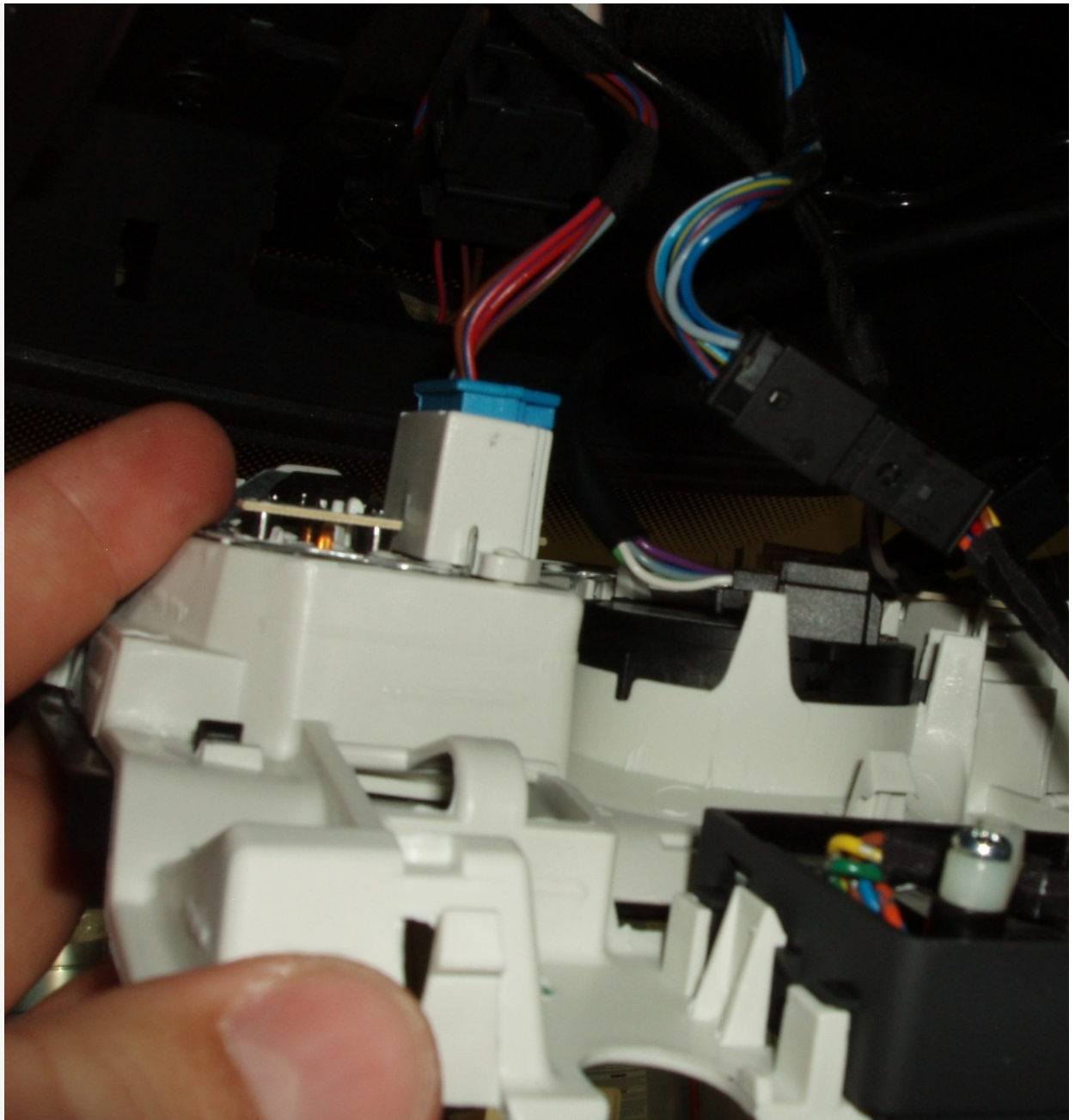
Next are two T-20 torx screws holding in the entire unit.



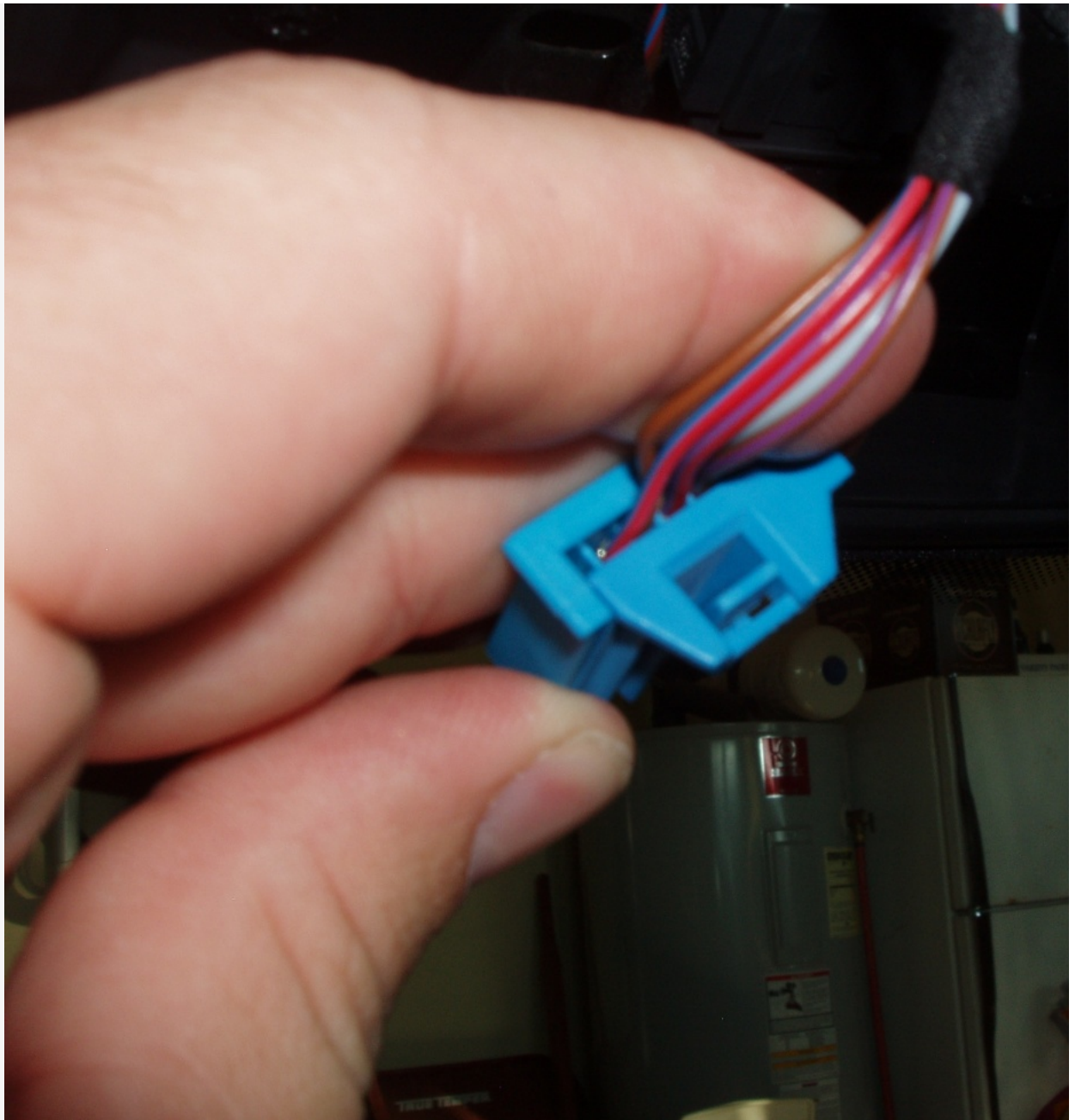
Remove these fully and then apply a small amount of pressure to release the two front clips on the unit:



Once these release you will be able to swing the unit down, out and off:

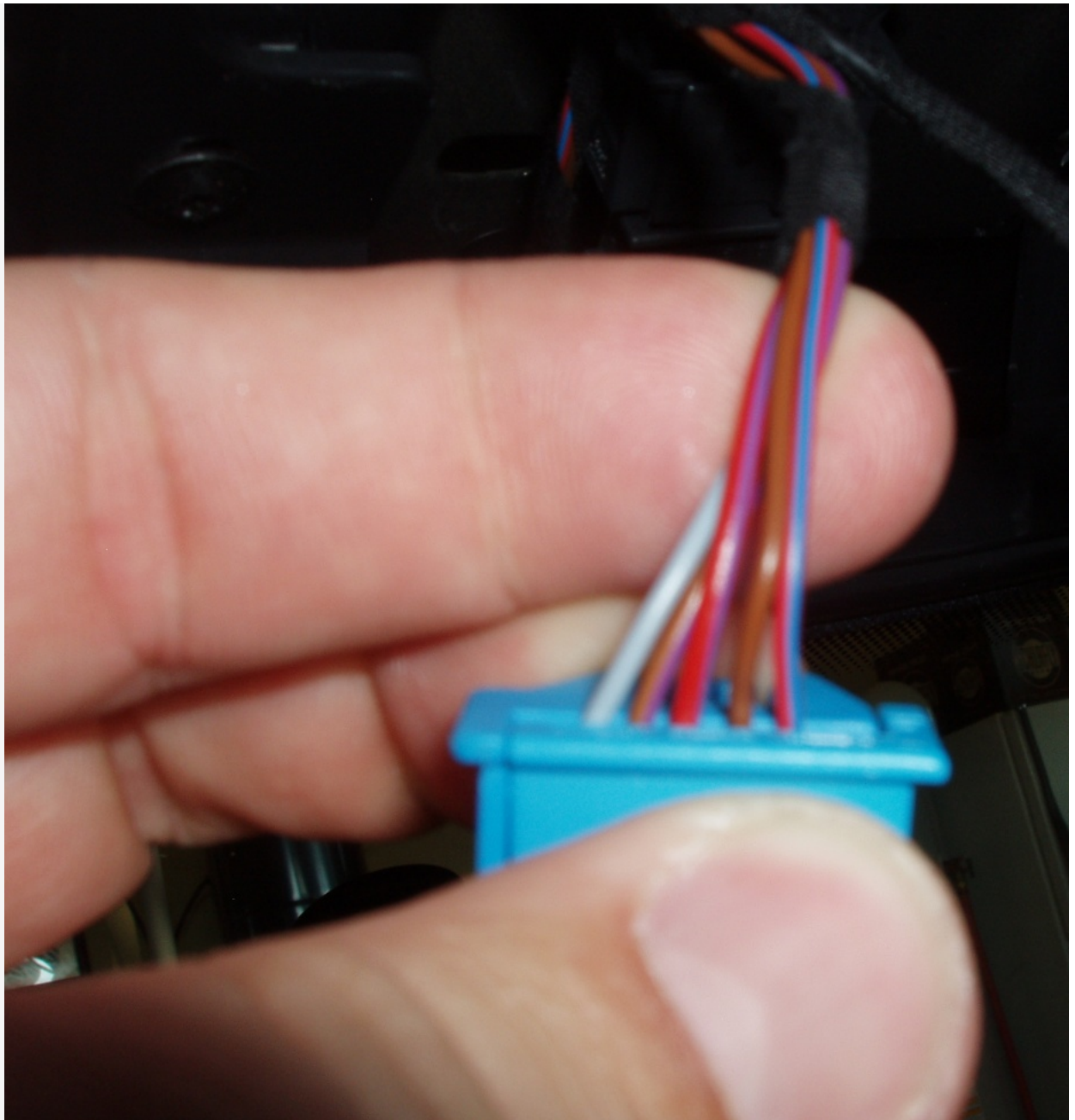


You will see a lot of wires connected by quick connects. The blue bundle is the one you want. The quick connect releases by a small tab in the

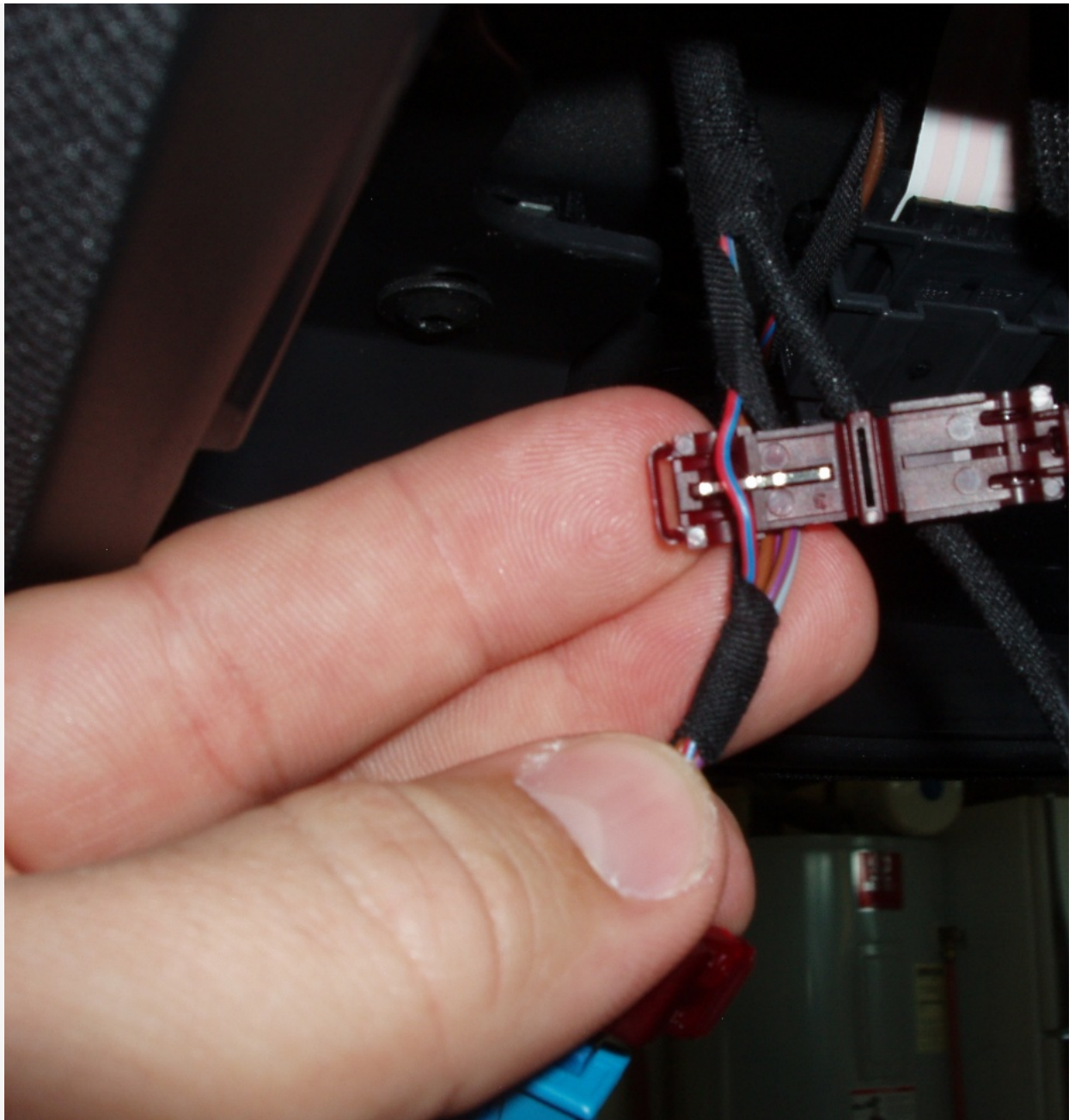


The instructions require both hot and switched power wire. However, the map lights in the GTI gain power once a door is opened and retain the power until the door is shut off. The Homelink unit does not lose its memory, so there is no need for constant power to the Homelink unit. I chose to power both wires with the same source.

The wire you want is the first/last wire in the blue quick connect. It is red with a blue stripe:



Gentex includes two forms of clip-on wire connectors for wiring the mirror. Red and blue. Use the red ones and not the blue connectors for the switched map light wire. It will look like this:



The wiring harness is made up of all black wires, but one of them has a white stripe. I didn't want to see the white stripe once the unit was in great and you cant tell it was just colored in:



You could shrink wrap them too, but this was free, available and easy.

Once the clip-on wire connectors are installed it is time to feed the wires. I attempted to use a coat hanger, but that didn't work. Instead I simply shoved the wires one at a time into the head liner. I used a hemostat to grasp them and pull them to me.

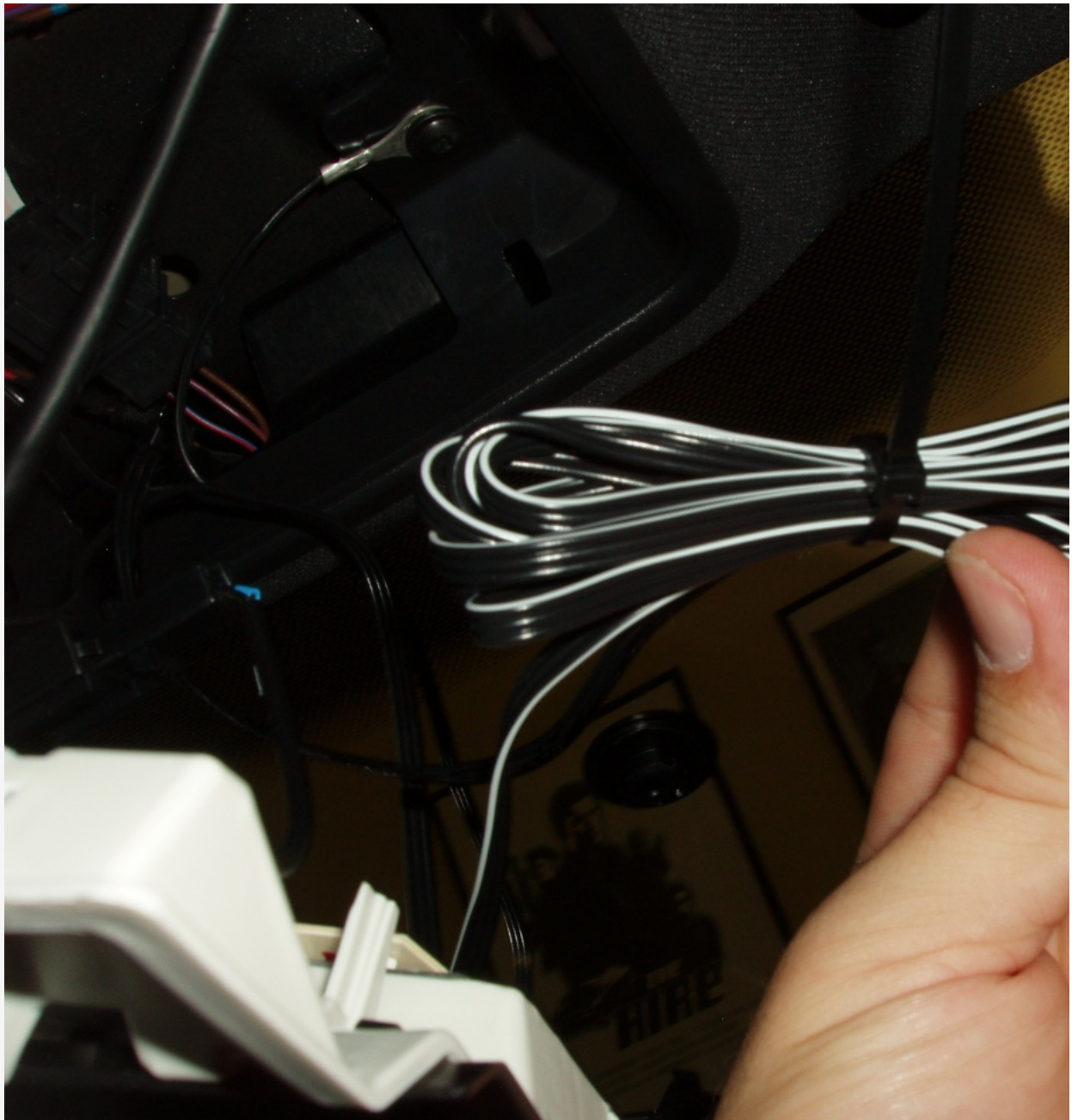
Time to find a spot for the ground. You can either tap a new screw into the metal, or do what I did and use one of the two torx screws that hold the head liner in place:



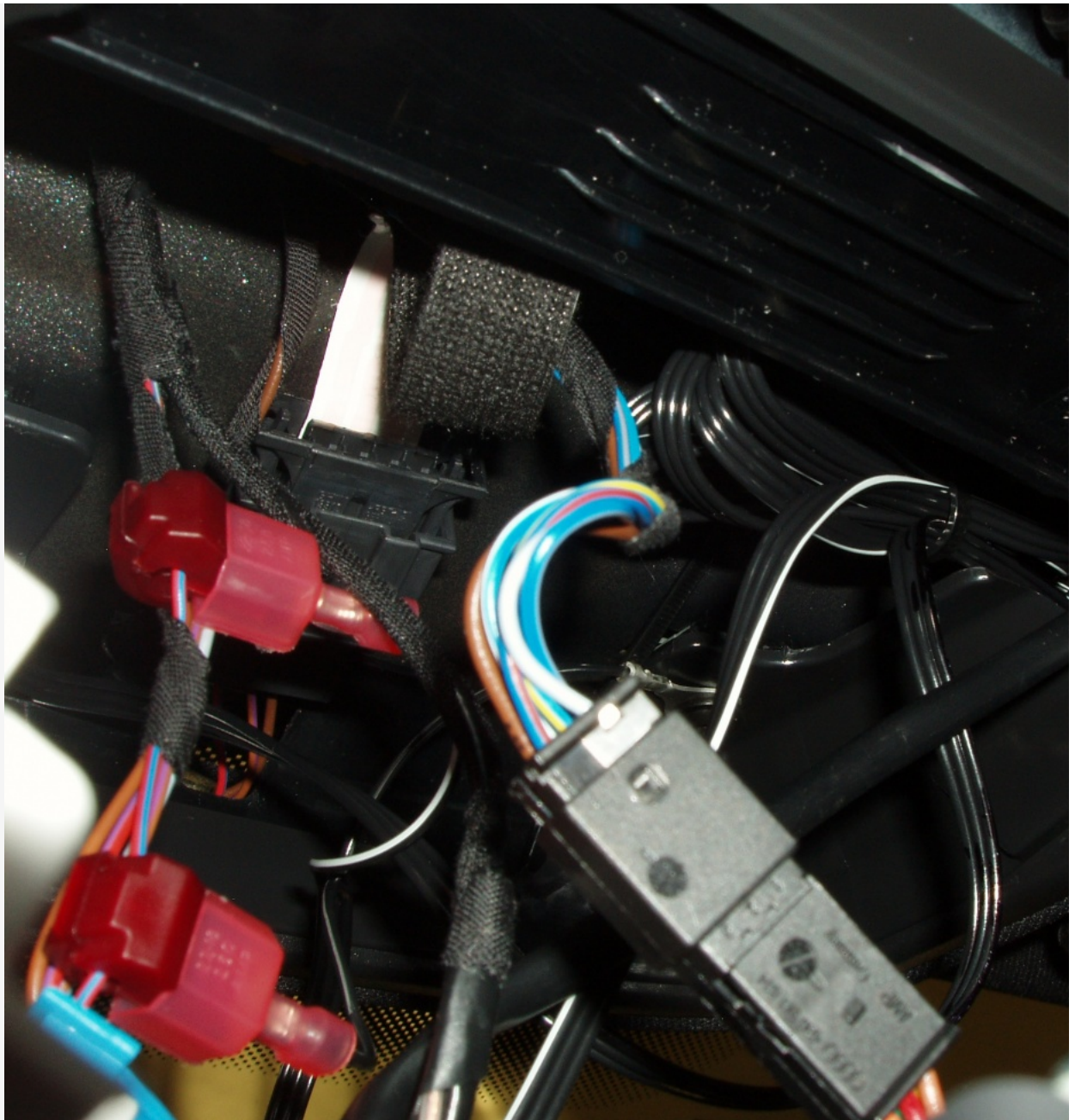
I used a dremmel to grind down the paint on the screw first to ensure a good connection. Once you have the ground in place, connect the two since they are both (in this instance) connected to the blue/red switched power wire.

Test to ensure the mirror is receiving power. The green light will glow (I was thinking of a way to change the green to red, but oddly enough, pressed/activated, so I left it green).

If OK, go ahead and zip tie the wires together with one of the included zip ties:



And shove the bundle into one of the spaces in the headliner:

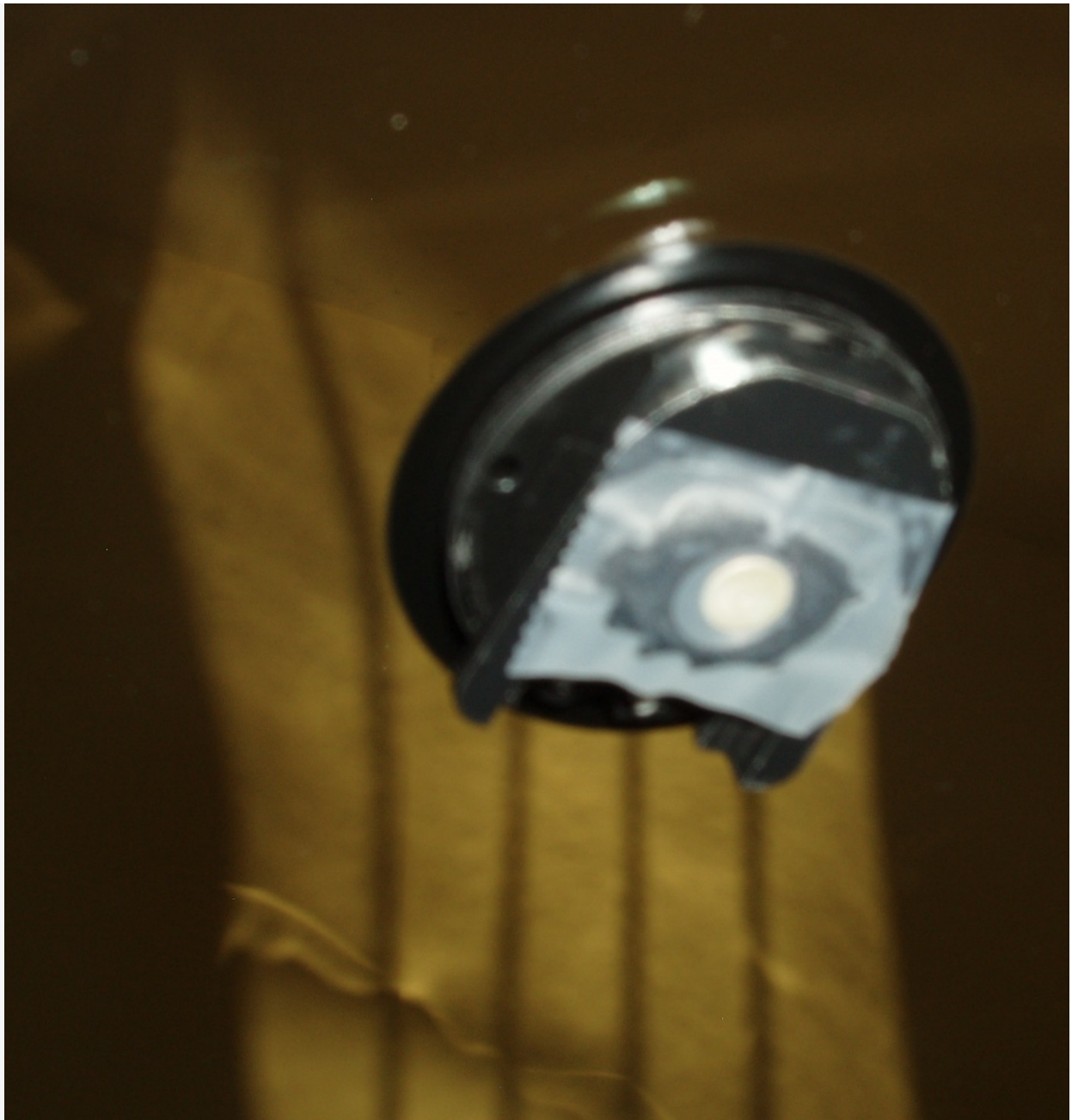


Now put the map light console back together in reverse.

Hang the painted horseshoe adaptor on the existing mirror base:



Next, tape the brass insert into the hole in the existing mirror base:



Replace the torx screw (it has a pointed end) that comes already installed on the Gentex mirror:

with the allen screw (it has a flat end) provided in the VW adapter kit. Slide the mirror over the button adapter and tighten the allen screw, h

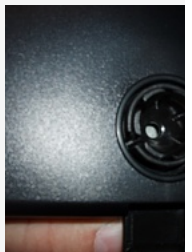


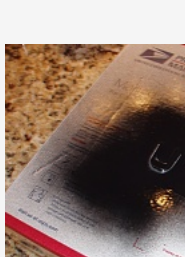
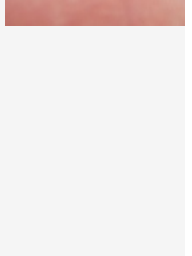
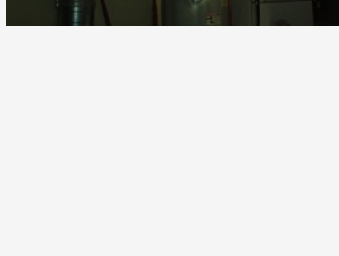
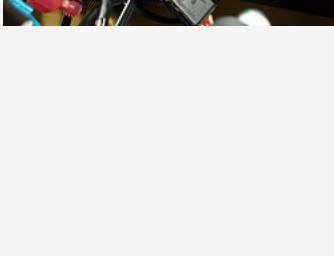
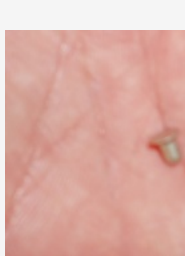
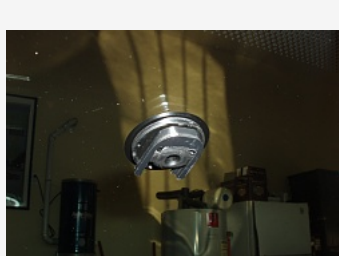
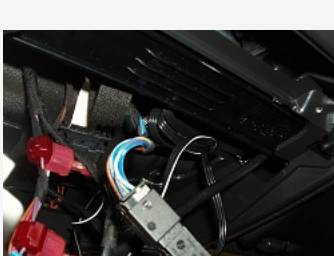
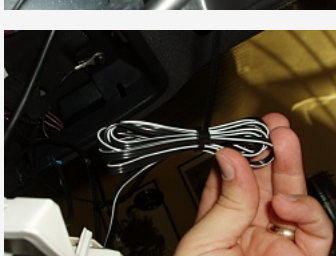
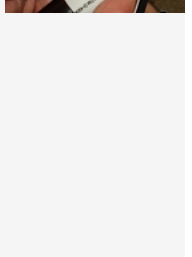
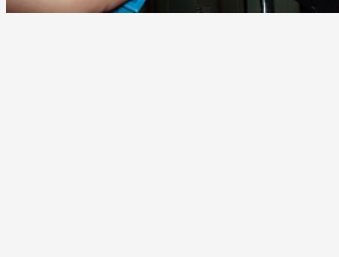
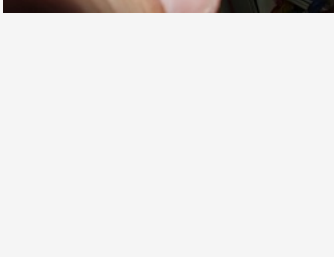
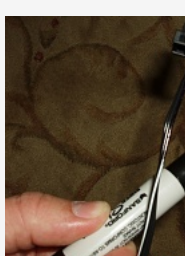
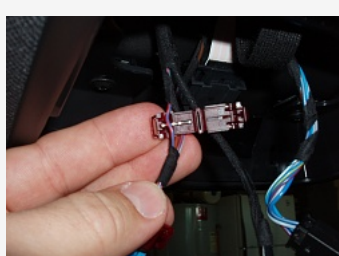
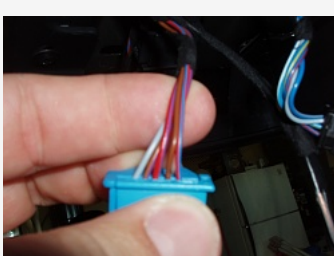
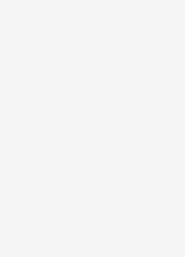
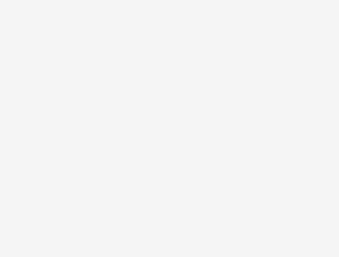
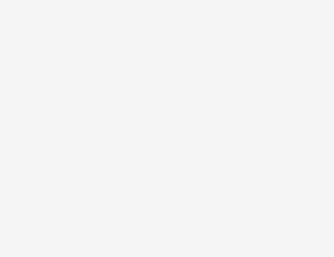
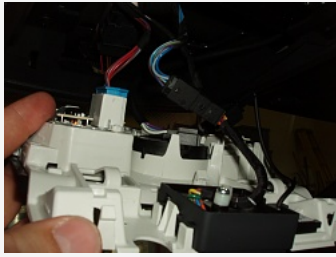


Your Done!

PM me if you need more pics or have questions!

[Attached Thumbnails](#)







2011 MKVI GTI CSG Autobahn

MY MOD THREAD: <http://www.golfmk6.com/forums/showthread.php?t=12631>

Last edited by jbcritch; 12-24-2010 at 01:16 PM.



12-24-2010, 01:22 PM

#2

danielj

Moderator



Drives: 2013 BMW x135
Join Date: May 2010
Location: Seattle WA
Posts: 8,093



Excellent work. Thanks for taking time to do the write-up and share with the forum.

What I used to drive: 2010 4dr GTI Shadow Blue/ DSG / HID's/ Autobahn/ Dynaudio

APR Stage I/ Carbonio Stage I&II Intake/ H&R Super Sports & RSB/ 18" Avant Gardes/ OEM LED Tails/ Some cosmetic stuff/ Now I'm done modding - because I traded it in.... 😊

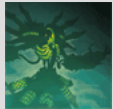


12-24-2010, 03:22 PM

#3

xGaspy

FIA GT Champion



Drives: 2012 SB GTI /1986
VR6T Jetta Coupe
Join Date: Dec 2010
Location: HOPEWELL, VA
Posts: 1,110



beautiful tutorial man, thank you! i think i will be attempting this soon, since my euroswitch has the auto function AND it's just hella nice looking! if i remember correctly, did you mention at one point the mirror lights up green? i guess a quick LED swap would remedy that to fit our interior, yeah?



12-24-2010, 04:19 PM

#4

jbcritch

Formula 5000 Champion



Drives: 2011 CSG MK6 GTI
Join Date: Oct 2010
Location: Chattanooga, TN
Posts: 2,605








It lights up both green and red. Green to indicate power, red to indicate that homelink is sending a signal. An LED swap us what I originally thought to do, but due to the dual color function I decided to leave it alone.

2011 MKVI GTI CSG Autobahn


MY MOD THREAD: <http://www.golfmk6.com/forums/showthread.php?t=12631>



Arash007ir

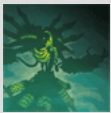
Rally Car Champion
   Drives: 2011 GTI Autobahn
Join Date: Dec 2010
Location: Chicago
Posts: 385I was looking into doing this even before I got my car.  

It's nice to see that there is a DIY.


Great job. 

xGaspy

FIA GT Champion

   Drives: 2012 SB GTI /1986
VR6T Jetta Coupe
Join Date: Dec 2010
Location: HOPEWELL, VA
Posts: 1,110

Quote:

Originally Posted by **jbcritch** *It lights up both green and red. Green to indicate power, red to indicate that homelink is sending a signal. An LED swap us what I originally thought to do, but due to the dual color function I decided to leave it alone.*

oh ok. that's cool. good to know man, thanks!



hondadude

FIA World Rally Car Newbie

   Drives: 2010 MK VI Gti
Join Date: Aug 2010
Location: Somewhere South of
Disorder
Posts: 409

Nice, on my mod list. Thanks for the great DIY write up!

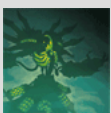
plac
GuestDrives:
Posts: n/a

so the only point of this is auto-dimming and garage door opener? can it do anything else?



xGaspy

FIA GT Champion

   Drives: 2012 SB GTI /1986
VR6T Jetta Coupe
Join Date: Dec 2010
Location: HOPEWELL, VA
Posts: 1,110

^ doesn't it also have the sensor on the back so it will automatically turn your lights on in low-light situations, if you have the auto light switch?



12-24-2010, 08:39 PM

#10

jbcritch

Formula 5000 Champion



Drives: 2011 CSG MK6 GTI
Join Date: Oct 2010
Location: Chattanooga, TN
Posts: 2,605



Quote:

Originally Posted by **plac**

so the only point of this is auto-dimming and garage door opener? can it do anything else?

yes....it slices, it dices, it juiliannes potatoes....

2011 MKVI GTI CSG Autobahn

MY MOD THREAD: <http://www.golfmk6.com/forums/showthread.php?t=12631>



12-24-2010, 08:41 PM

#11

jbcritch

Formula 5000 Champion



Drives: 2011 CSG MK6 GTI
Join Date: Oct 2010
Location: Chattanooga, TN
Posts: 2,605



Quote:

Originally Posted by **xGaspy**

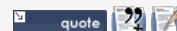
^ doesn't it also have the sensor on the back so it will automatically turn your lights on in low-light situations, if you have the auto light switch?

Nope. That requires a new windshield or removal of the button by heating it up and ripping it off the glass. Many folks have cracked the windshield doing that.

I would love to have the auto headlights. The added benefit is if you have auto headlights you also get auto rain sensing windshield wipers (it is the same sensor and no other equipment is necessary - just VAG). I opted not to go that route due to price and replacement of a perfectly good and water tight windshield.

2011 MKVI GTI CSG Autobahn

MY MOD THREAD: <http://www.golfmk6.com/forums/showthread.php?t=12631>



12-25-2010, 01:04 AM

#12

jmlur

Formula 5000 Driver



Drives: MkVI GTI 2dr DSG CSG
Join Date: Jan 2010
Location: Boston
Posts: 1,469



Great detailed writeup, and good timing- I was price shopping dimming mirrors to purchase this weekend! (skipping homelink, have an RFID card)

I'm tempted to try and add auto lights/wiper... I figure I can just mount the sensor next to the black dot, no reason it needs to be integrated into the mirror housing. I'll just offset it to the passenger side so it's not visible. Time to do some research...

EDIT: Looks like it's doable, although the sensor is pretty huge so it'd be hard to hide well (looks like 1" x .75"). It's also \$130... ouch!



2010 MKVI GTI

CSG :: DSG :: HID :: Dynaudio :: Sunroof
18" VW Vision V (summer) :: 17" Detroit's (winter) :: P3cars Digital Boost Gauge :: S2T DSG Paddle Shifters :: Euroswitch :: Auto Dimming Rearview Mirror w/ Homelink (install soon)

Last edited by jmlur; 12-25-2010 at 01:23 AM.



12-25-2010, 12:29 PM

#13

jbcritch

Formula 5000 Champion



Quote:

Originally Posted by **jmlur**

Great detailed writeup, and good timing- I was price shopping dimming mirrors to purchase this weekend! (skipping homelink, have an RFID card)

I'm tempted to try and add auto lights/wiper... I figure I can just mount the sensor next to the black dot, no reason it needs to be integrated into the mirror housing. I'll just offset it to the passenger side so it's not visible. Time to do some research...

EDIT: Looks like it's doable, although the sensor is pretty huge so it'd be hard to hide well (looks like 1" x .75").

Drives: 2011 CSG MK6 GTI
Join Date: Oct 2010
Location: Chattanooga, TN
Posts: 2,605

It's also \$130... ouch!

Thanks!

I was thinking about just auto lights and mounting the sensor at the bottom left of the windshield.

Please do a DIY if you get the headlight/rain sensor to work! 🤖

2011 MKVI GTI CSG Autobahn

MY MOD THREAD: <http://www.golfmk6.com/forums/showthread.php?t=12631>

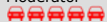


12-25-2010, 12:32 PM

#14

danielj

Moderator



Drives: 2013 BMW x135
Join Date: May 2010
Location: Seattle WA
Posts: 8,093

I would like a rain sensor. I like that our wipers are at least speed sensitive but rain sensitive would be better, especially in Seattle.

Having homelink will allow me to get rid of 2 remotes that I have cluttering my cabin so I'm looking forward to this addition.

What I used to drive: 2010 4dr GTI Shadow Blue/ DSG / HID's / Autobahn/ Dynaudio

APR Stage I/ Carbonio Stage I&II Intake/ H&R Super Sports & RSB/ 18" Avant Gardes/ OEM LED Tails/ Some cosmetic stuff/ Now I'm done modding - because I traded it in.... 🤔



12-27-2010, 05:36 PM

#15

EJBGTIVI

Formula 3000 Champion



Drives: 2010 GTI
Join Date: Oct 2010
Location: Ballsack Heights, IL
Posts: 4,330

Great write up- thanks for sharing. Looking forward to doing this in the spring. I miss my auto dim mirror.



12-28-2010, 05:14 AM

#16

snobdrdan

Formula 2 Driver



Drives: a VW
Join Date: May 2010
Location: Southeast Michigan
Posts: 5,530

Awesome writeup!

I wish this car came stock with a dimming mirror. 🤔

Quick question though....does it have on/off?
Or is it always on?

2014 Passat VR6
2015 Passat Sport



12-28-2010, 09:48 AM

#17

jbcritch

Formula 5000 Champion



Quote:

Originally Posted by **snobdrdan**
Awesome writeup!



Drives: 2011 CSG MK6 GTI
Join Date: Oct 2010
Location: Chattanooga, TN
Posts: 2,605



I wish this car came stock with a dimming mirror. 🙄

Quick question though.....does it have on/off?
Or is it always on?

Thanks!

It does have an on/off switch. 🙄

2011 MKVI GTI CSG Autobahn

MY MOD THREAD: <http://www.golfmk6.com/forums/showthread.php?t=12631>



12-28-2010, 05:06 PM

#18

snobdrdan

Formula 2 Driver
🏎️ 🏎️ 🏎️ 🏎️ 🏎️



Drives: a VW
Join Date: May 2010
Location: Southeast Michigan
Posts: 5,530



Quote:

Originally Posted by **jbcritch** ➤
Thanks!

It does have an on/off switch. 🙄

Nice

Did you ever think about grabbing an OEM one from a different or wrecked VW car? (just wondering)

2014 Passat VR6
2015 Passat Sport



12-28-2010, 09:18 PM

#19

jbcritch

Formula 5000 Champion
🏎️ 🏎️ 🏎️ 🏎️ 🏎️



Drives: 2011 CSG MK6 GTI
Join Date: Oct 2010
Location: Chattanooga, TN
Posts: 2,605



Quote:

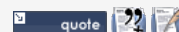
Originally Posted by **snobdrdan** ➤
Nice

Did you ever think about grabbing an OEM one from a different or wrecked VW car? (just wondering)

No because the OEM does not have Homelink, it is just auto dimming.

2011 MKVI GTI CSG Autobahn

MY MOD THREAD: <http://www.golfmk6.com/forums/showthread.php?t=12631>



12-28-2010, 11:52 PM

#20

TREginginCO

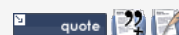
Rally Car Newbie
🏎️ 🏎️ 🏎️ 🏎️ 🏎️



Drives: 2010 JSW TDI w/DSG
& 2006 Touareg
Join Date: Jan 2010
Location: Parker, CO
Posts: 269



That is a great write-up... because I can probably use that power lead on the map lights to power my V-1 and I can run a shorter line rather than get anywhere near my A-pillar.



reply

Page 1 of 17 1 2 3 11 > Last »

Tags

Edit Tags

None

Quick Reply

Message:



Options

☐ Quote message in reply?

☒ Show your signature

Post Quick Reply

Go Advanced

[« Previous Thread](#) | [Next Thread »](#)

Posting Rules

You **may** post new threads
You **may** post replies
You **may** post attachments
You **may** edit your posts

BB code is **On**
Smilies are **On**
[IMG] code is **On**
HTML code is **Off**

Forum Jump

Cosmetic Mods (interior & exterior modifications)



Go

All times are GMT -4. The time now is 06:28 PM.

-- New 3.7

Contact Us - [VW GTI MKVI Forum](#) / [VW Golf MKVI Forum](#) / [VW Golf R Forum](#) / [VW GTI Forum](#) - [Golfmk6.com](#) - [Archive](#) - [Top](#)

Powered by vBulletin® Version 3.7.2
Copyright ©2000 - 2015, Jelsoft Enterprises Ltd.