

[User CP](#)[FAQ](#)[Members List](#)[Calendar](#)[New Posts](#)[Search](#) ▾[Quick Links](#) ▾[Log Out](#)**GOLFMK6**

[VW GTI MKVI Forum / VW Golf R Forum / VW Golf MKVI Forum / VW GTI Forum - Golfmk6.com](#) > [Technical Topics](#) > [DIY Guides and Discussions](#)

[Under Seat Storage Tray DIY - Lot's of Pics](#)

Welcome, [lateapxr](#).

You last visited: Yesterday at 11:40 PM

Your Notifications: **1** ▾

Page 1 of 6 **1** **2** **3** > [Last »](#) ▾

[Thread Tools](#) ▾ [Search this Thread](#) ▾ [Rating: ★★★★★](#) ▾ [Display Modes](#) ▾

07-17-2011, 10:04 PM

TurtleJames

FIA GT Champion



Drives: 2011 GTI
Join Date: Feb 2011
Location: NJ
Posts: 1,149

Under Seat Storage Tray DIY - Lot's of Pics

Installed on 2011 GTI 4 Door Autobahn.

Leather power recline seats with Dynaudio amp and Bluetooth module underneath the seats. So it should fit on any GTI.

Tools Needed:

T-20 Torx Bit
M-10 Triple Square Bit
Ratchet Wrench
Ratchet Extension Bar (~ 5-8 inches)
4mm Rivet Gun



Parts:

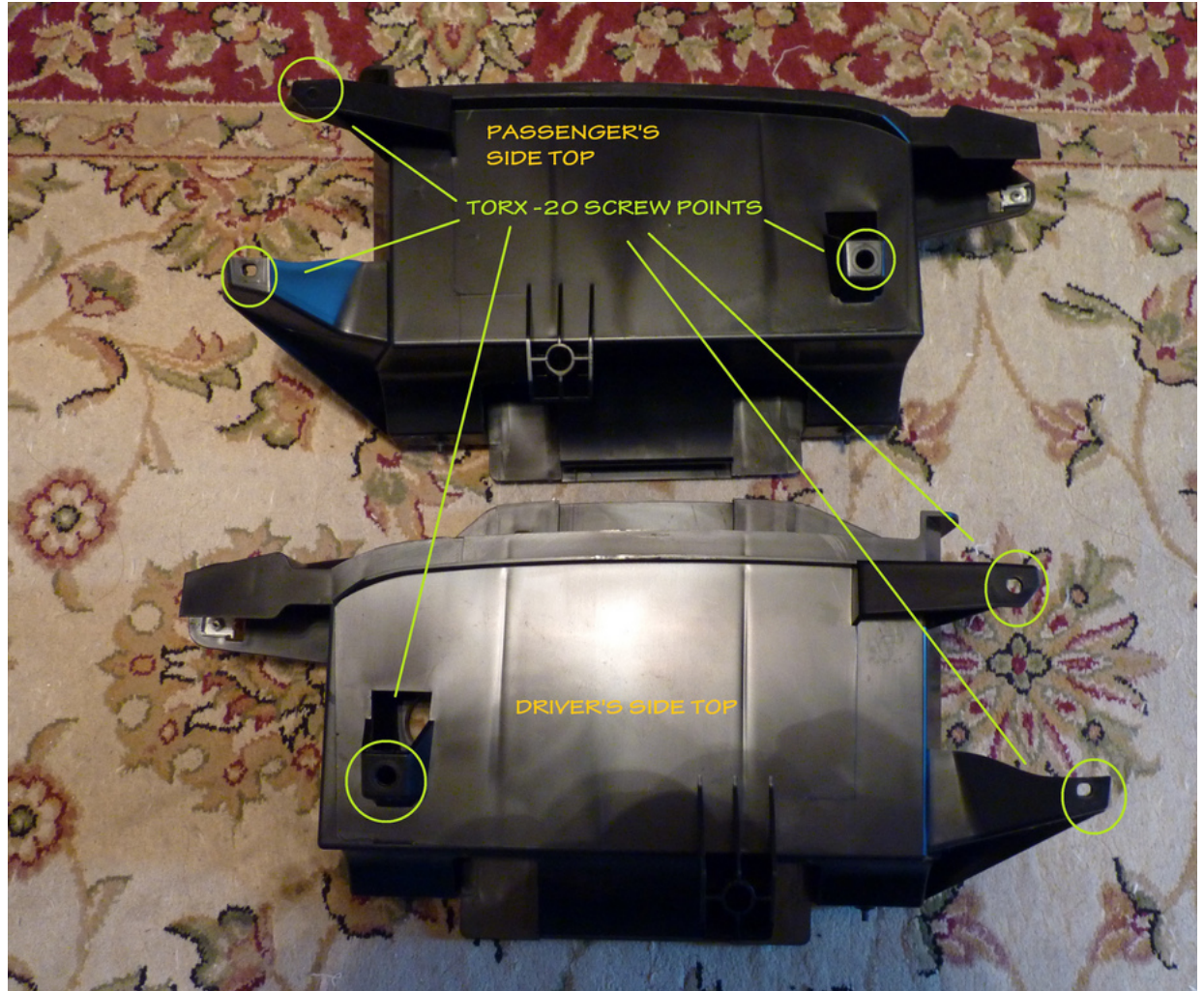
ECS Tuning includes all the hardware needed for install.

Seat Tray Kit - Titanium Black: Driver's Side

Parts by VW Number:

1x 1K0 882 601J 82V - Driver's Side Drawer
1x 1K0 882 602J 82V - Passenger's Side Drawer
1x 1K0 882 599B 9B9 - Driver's Side Guidance Frame
1x 1K0 882 600B 9B9 - Passenger's Side Guidance Frame
1x 1K0 881 547A - Driver's Side Retainer (Metal Piece)
1x 1K0 881 548A - Passenger's Side Retainer (Metal Piece)
4x N 900 978 02 - Pop Rivet 4x8x12.3
8x N909 998 01 - Oval Hexagon Socket Head Bolt M4x8.5 (T20 Torx)

Guidance Frames





Drawers



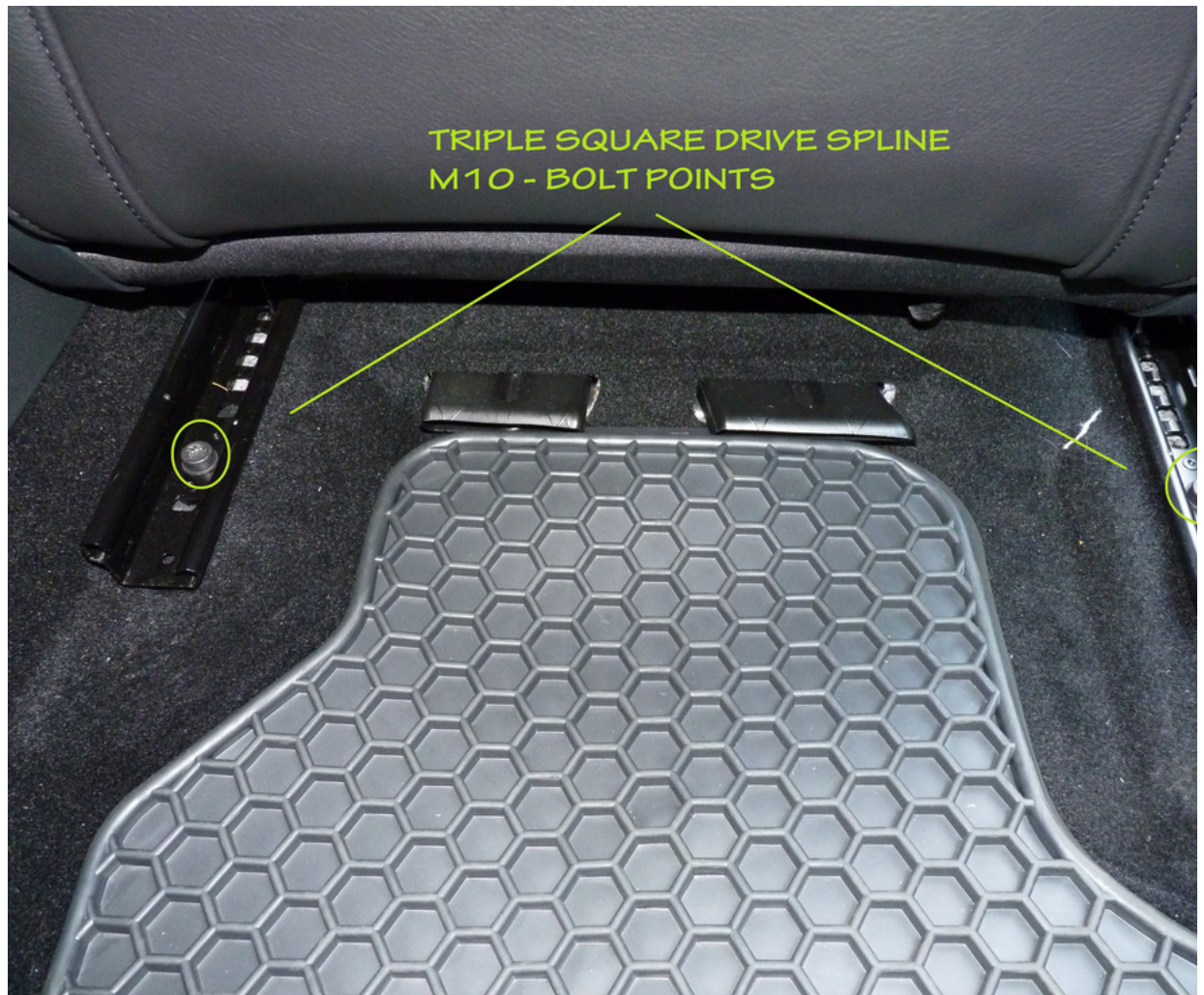


Step One:

Seats are held by 4 (2 Front 2 Back) Triple Square M10 bolts on the rails.
In a pinch, a T50 Torx bit will also work for these bolts.



Slide seat forward as far as it will go.
Remove the 2 bolts on the rear of the seats.



Step Two:

Slide the seat back as far as possible.
Remove the bolts in the front.
You can now gently tilt back the entire seat assembly.
You might want to move your seat back forward before doing this.
Also you will not need to disconnect any wires. Just be careful.

You remove the rear bolts first, because if you go front to back then the rails will shift when you slide the seat back with no bolts later.



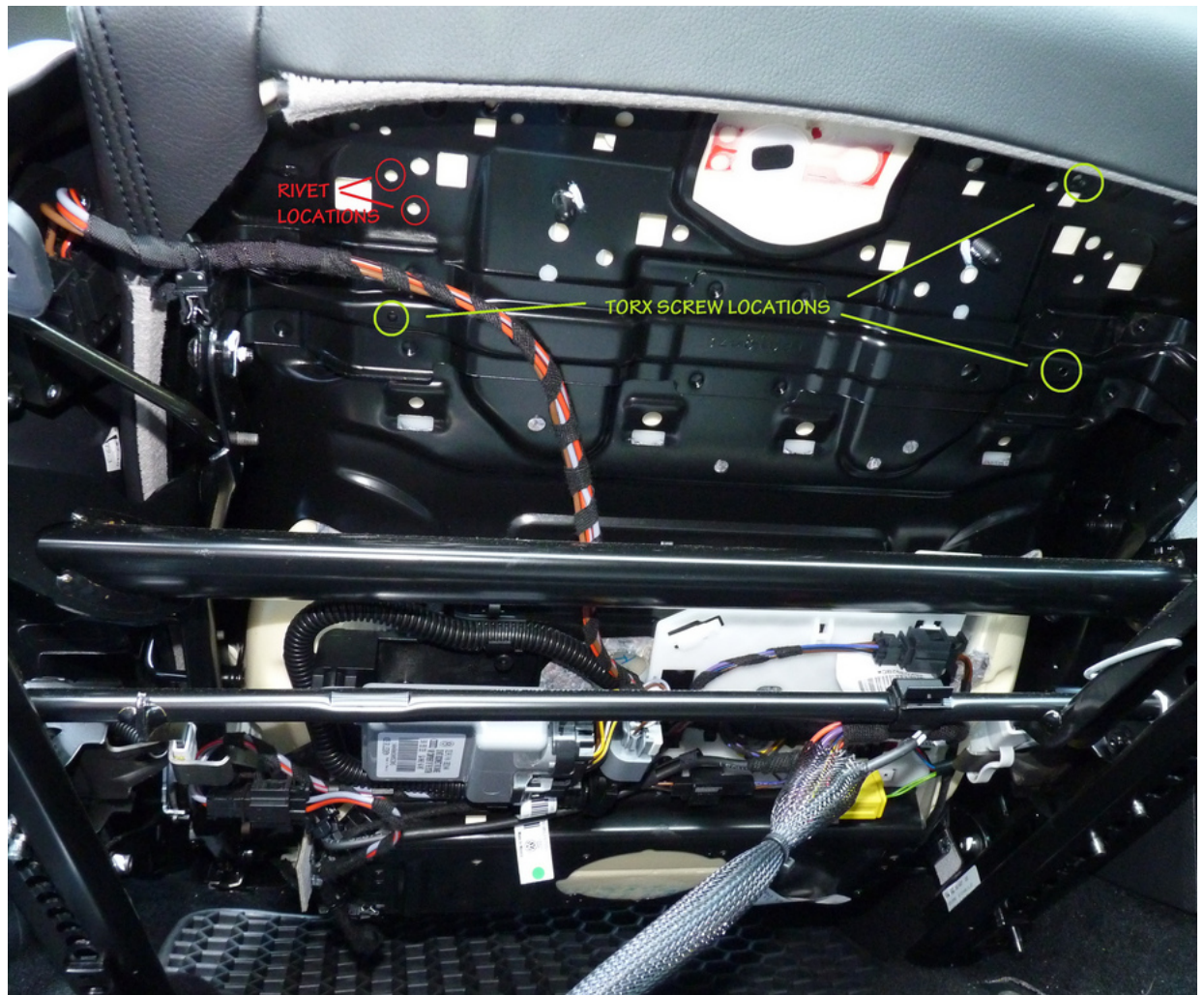




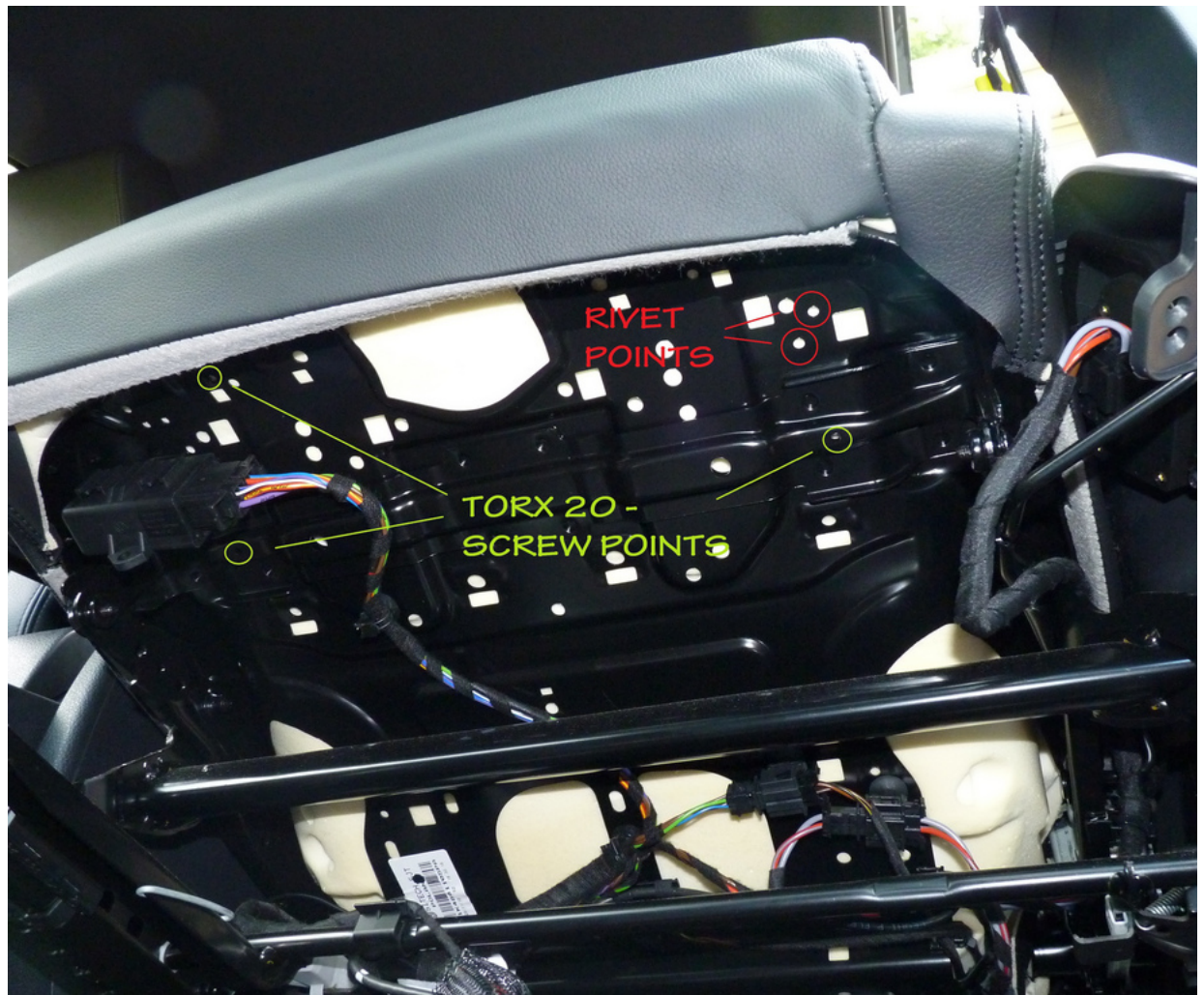
Step Three:

Locate the rivet points underneath the seat.

Passenger's Side



Driver's Side

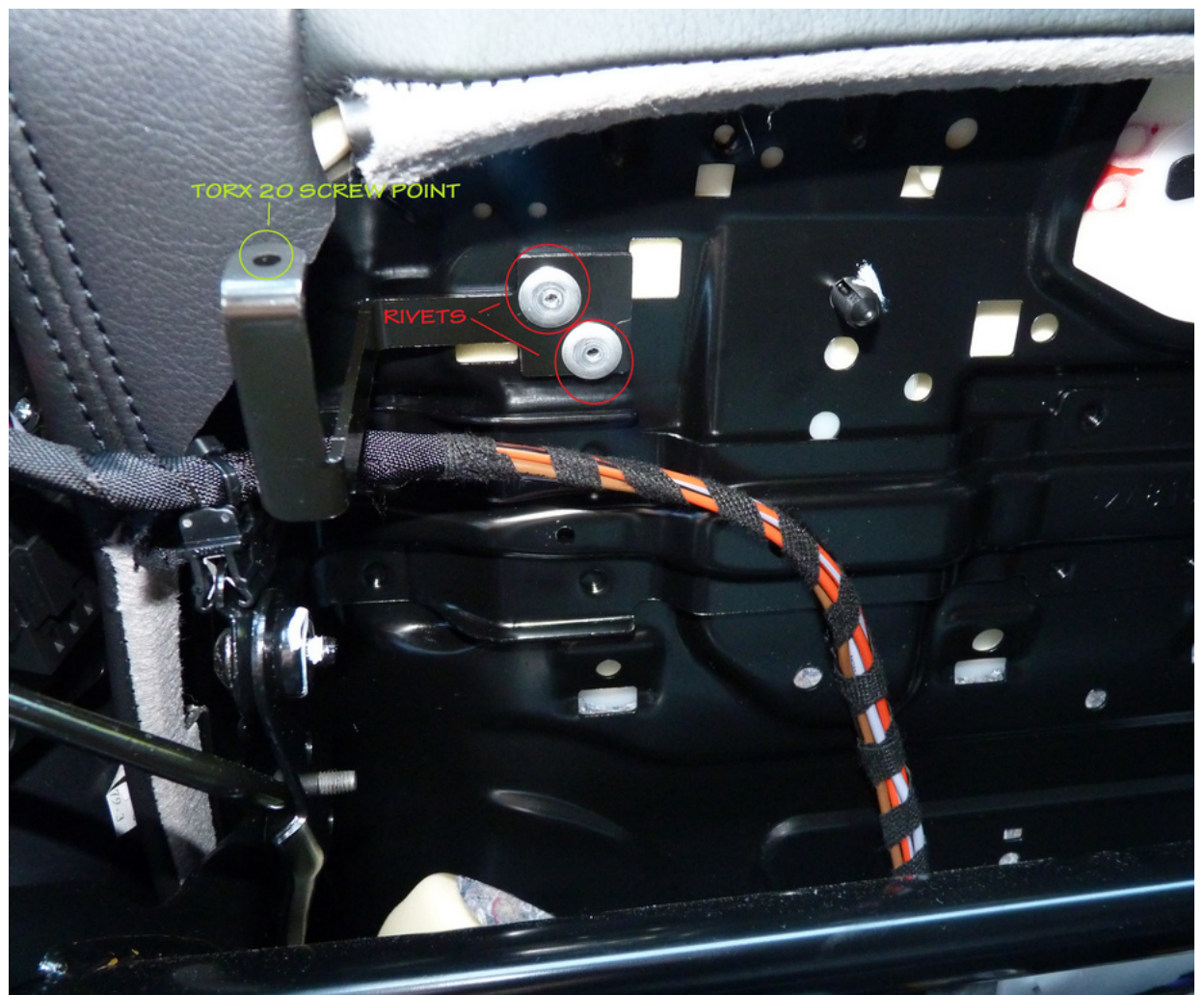


Line up the retainer metal piece and tape it in place if you have no one to hold it for you.

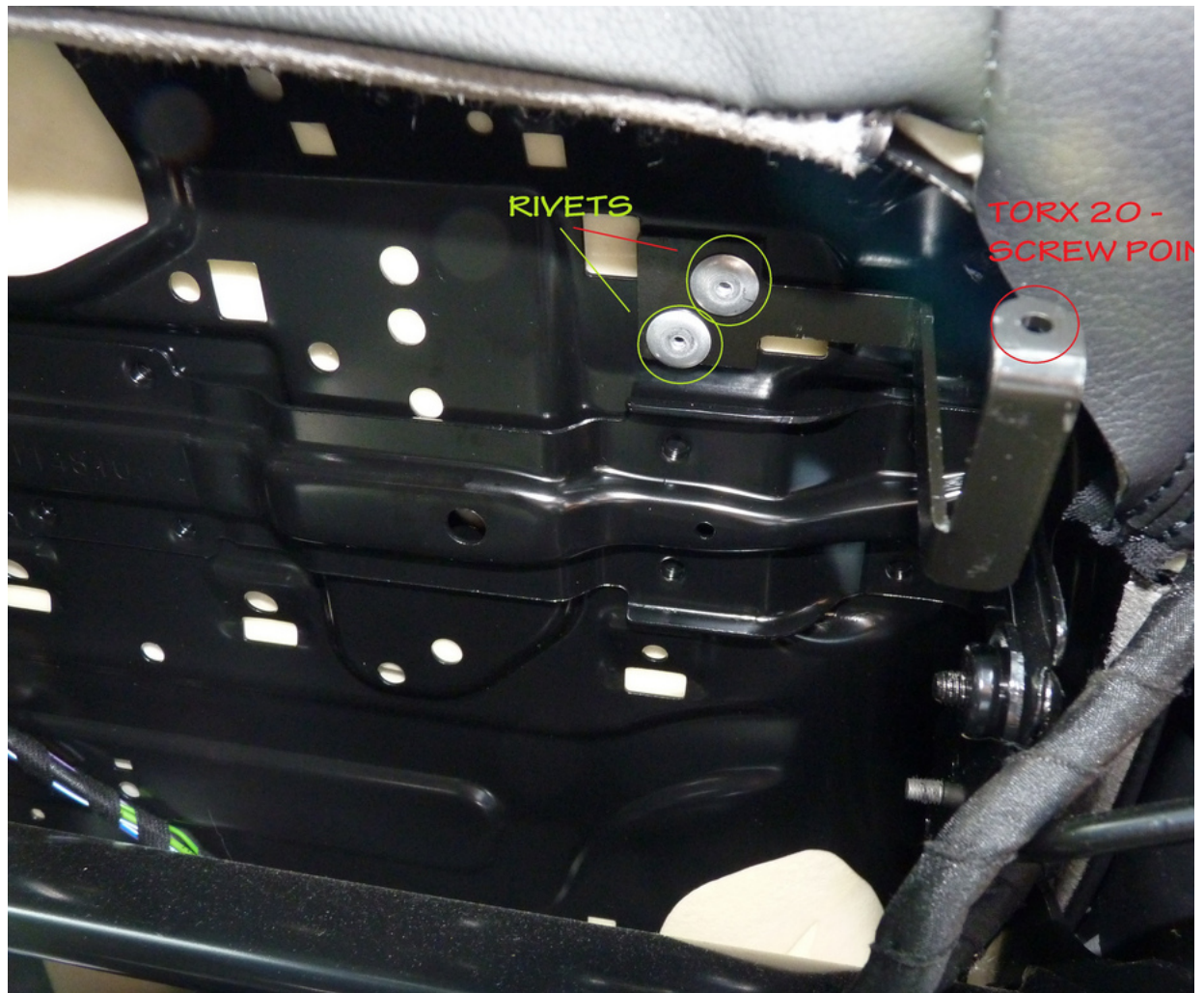
Use a rivet gun to attach the metal retainer piece.
Watch a Youtube video of how to use a rivet gun if you don't know how.
It's really easy.

Warning: The retainer pieces are side specific. Look at the pics carefully so you don't switch them. Once riveted, it will be a pain to fix.

Passenger's Side



Driver's Side



Step Four:

Place the guidance frames underneath the seat and line them up with the screw points.

It is easiest to screw them from outside in starting with the riveted brace.

The center screw will require you to go through the hole in the bottom of the tray. You will need to use the extension bar. This is also why you install the drawer into the tray until you are done.

Passenger's Side



Driver's Side



Step Five:

Take your drawer piece and line it with the guides in the frame.
Once the drawer meets some resistance, you can use a gentle tap to lock it into place.



You're done!

Additional Photos:













Thoughts:

- Installation is very simple and quick.
- Drawers add some much needed storage space.
- Drawers are lined with felt and match up perfectly with rest of interior.
- Leather was upholstered lower on my driver's side which prevents the drawer from closing properly. This is probably vehicle specific so YMM
- Drawers don't slide out very far. The pictures above are as far as they open.



07-18-2011, 01:51 AM

#2

GTI_likeurmom

GolfMK6 Elite
🚗🚗🚗🚗🚗🚗




Drives: Veyron 16.4
Join Date: Jul 2010
Location: woke up in a new Bugatti
Posts: 18,856

nice write up.



Quote:

Originally Posted by **GOBbluth** 
I cut the tether off. When I get to the pump, I remove the cap and chuck it into the nearest bush, patch of trees, or some sort of wet lands. I pump gas. Then I spend anywhere from 5 to 165 minutes retrieving the cap. I screw it back on and drive away. I'm not letting it dangle against the paint and I don't know any better way.



07-18-2011, 04:19 AM

#3

Awesome write up.

FinalOne

Touring Car Champion



Drives: GTI DSG sunroof,
xenon, steel gray
Join Date: Aug 2010
Location: Cyprus
Posts: 223



i had these installed from factory for 50 euro
I dont know how much did it cost for you to install,
but i think they provide too little space to worth an aftermarket install
(Just a couple o CD's) its cool though 🙄👍

I'll head back to my GTI now.



07-18-2011, 06:54 AM

#4

walbjj

Oval Newbie



Drives: my11 golf gti 3dr white
Join Date: Mar 2011
Location: sydney, australia
Posts: 118



no idea what people are carrying in their cars to say that these pissy little drawers provide much needed sotrage space?
a glovebox, centre console where my ipod goes, and side pockets. plus i have the front ashtray console and the drivers
console as well as the bottle opener console.
what else do u need?
if its a big item, it goes in the boot.



07-18-2011, 12:20 PM

#5

Steve717

FIA GT Newbie



Drives: 2011 VW GTI MKVI
Join Date: Feb 2011
Location: Rochester, NY
Posts: 725



Nice DIY - I see you did the Euro Cubby in the dash as well.....

Steve



2011 CSG GTI w/ Sunroof & Navi - Stage 2 APR, Custom VMR 710 Wheels, BSH Race Intake, UR Downpipe, New South
Boost Gauge, 3M Tint, Lamin-X Markers, Hoen H8 HID Match Fogs, Hatch Lift Kit, LED Interior Lighting.



07-18-2011, 12:37 PM

#6

TurtleJames

FIA GT Champion



Drives: 2011 GTI
Join Date: Feb 2011
Location: NJ
Posts: 1,149



Quote:

Originally Posted by **walbjj**

no idea what people are carrying in their cars to say that these pissy little drawers provide much needed sotrage space?

a glovebox, centre console where my ipod goes, and side pockets. plus i have the front ashtray console and the drivers console as well as the bottle opener console.

what else do u need?

if its a big item, it goes in the boot.

Us Americans have a lot of junk in the trunk I guess...

In all seriousness though, the NA spec GTI's do not come with the dash cubby or sliding cup holders. Compared to other cars in our market, the GTI has very little usable storage space. Even the sunglass holder won't hold anything but the smallest of glasses. The center console underneath the armrest is a joke. And the ashtray will barely fit an EZ pass if you lay it just right.

I agree the underseat drawers are small as you can see in the pics above, but they are good for keeping small items from cluttering the cabin. It's good for CD's, tissues/towels, flashlights, small tools, receipts, etc. I like to keep my side pockets free. Just keep my VW umbrella and maybe a water bottle in there. And I only put documents in the glovebox. So I guess it just depends on how you like to organize things. 😊



07-18-2011, 12:42 PM

#7

theunderlord

FIA World Rally Car Champion



Haters gon' hate I guess.

Great write-up!



Drives: MY11 Golf TDI / MY10 E60 M5
Join Date: Jun 2011
Location: Seattle
Posts: 526



MY11 Golf Candy White TDI 6MT. 3K Fogs. LED Interior. rDash plate LED's. HID Projectors. rLine LED Tails. 20% Tint. 18" Tarmac. H&R SS. AWE TDI Dual Exhaust
MY10 E60 ///M5 6MT Carbon Black. 20" HRE P40.



07-18-2011, 12:42 PM

#8

TurtleJames

FIA GT Champion



Drives: 2011 GTI
Join Date: Feb 2011
Location: NJ
Posts: 1,149



Quote:

Originally Posted by **Steve717**
Nice DIY - I see you did the Euro Cubby in the dash as well.....

Steve

Thanks. Yea, it wasn't that hard to install except for one bolt. ECS has a great video. Small hands and the right tools make all the difference. The euro cupholders were a different nightmare altogether though.



07-18-2011, 11:19 PM

#9

Zero46

Touring Car Newbie



Drives: 10 GTI
Join Date: Feb 2010
Location: Ya Mum's Fishtank
Posts: 193



Thanks for the writeup. Do they affect how low the seats can go tho? I keep mine almost all the way down.



07-23-2011, 10:56 AM

#10

wutsupdoc

Rally Car Newbie



Drives: Black 2011 4D MT
Join Date: May 2011
Location: Boston
Posts: 308



very nice write up. i don't think im going to get these anymore, because they just don't look worth it. but very nicely done, lots of helpful pictures, and tons of information. great job



07-23-2011, 01:55 PM

#11

jbcritch

Formula 5000 Champion



Very nice write up. I hope to do this one day. You also have the euro cup holder that I want, but I'm not brave enough to tackle that one.

2011 MKVI GTI CSG Autobahn

MY MOD THREAD: <http://www.golfmk6.com/forums/showthread.php?t=12631>

Drives: 2011 CSG MK6 GTI
Join Date: Oct 2010
Location: Chattanooga, TN
Posts: 2,602



07-23-2011, 04:09 PM

#12

nafljhy

FIA World Rally Car Champion



Drives: 2011 UG GTI
Join Date: Jan 2011
Location: BUR
Posts: 676



the euro cup holder isn't as bad as it seems. i just did it today. i messed up at first and ended with two extra screws but i got it all back together now.

maybe i'll take it apart again and take some pictures for a DIY as we are missing one for it right now.

OT: i followed turtlejames' guide and it works perfectly!

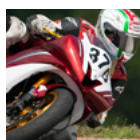


07-23-2011, 05:47 PM

#13

Wicked

Autocross Champion



Drives: 2011 GTI
Join Date: Jul 2011
Location: across the pond
Posts: 91



Thanks for the write up... Definately need more storage in this car.



07-24-2011, 01:11 AM

#14

Rotaryknight

Formula 3000 Driver



Drives: 2011 GTi CSG
Join Date: Jul 2011
Location: So Cal
Posts: 3,864



Did this install the other day. Thanks to this write up and my ipad in the garage with me.



07-24-2011, 10:36 PM

#15

TurtleJames

FIA GT Champion



Drives: 2011 GTI
Join Date: Feb 2011
Location: NJ
Posts: 1,149



Quote:

Originally Posted by **Zero46**

Thanks for the writeup. Do they affect how low the seats can go tho? I keep mine almost all the way down.

No. Seats go all the way down. Thanks.



07-24-2011, 10:40 PM

#16

TurtleJames

FIA GT Champion



Quote:

Originally Posted by **jbcritch**

Very nice write up. I hope to do this one day. You also have the euro cup holder that I want, but I'm not brave



Drives: 2011 GTI
Join Date: Feb 2011
Location: NJ
Posts: 1,149



enough to tackle that one.

Thanks. The euro cup holder was difficult because I had to figure out how to remove all the paneling. This [GUIDE](#) is pretty similar to our cars. If you remove the passenger seat as per the instructions of the seat drawers, you can lift up the cup holder panel and get it out from the side instead of getting the entire thing off the parking brake.



07-24-2011, 10:42 PM

#17

Medussa

FIA World Rally Car Newbie
🚗🚗🚗🚗🚗



Drives: 2010 Candy White
Join Date: Sep 2010
Location: YORKTOWN HEIGHTS
NY
Posts: 451



What can you possible store here condoms??



08-01-2011, 09:48 AM

#18

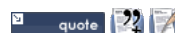
Gt-me

Passed Driver's Ed
🚗🚗🚗🚗🚗

Drives: Golf Mk6
Join Date: Aug 2011
Location: Weybridge, Surrey,
Uk
Posts: 8



Hi guys,
Sorry to ask such a newbie question but will this work on all Mk6 golfs?
Just picked up my 2009 Gt-tdi and was looking at doing this over the weekend.



08-01-2011, 01:40 PM

#19

grifgolf

Go Kart Champion
🚗🚗🚗🚗🚗

Drives: 2010 Golf TDI
Join Date: Apr 2010
Location: Florabama
Posts: 37



Quote:

Originally Posted by [wutsupdoc](#)
i don't think im going to get these anymore, because they just don't look worth it.

They're small but surprisingly useful -- as others have commented there's not a lot of storage space otherwise. I keep my GPS unit, a Swiss Army knife, and a notebook for MPG calculations under the driver's seat, and maps and heavy-duty napkins under the passenger seat. Before getting the drawers I stored everything in the door cubbies...which took away from the sleek look of the interior.

The only downside is my heel bumps against them occasionally -- the drawers sit further forward than I expected, even when closed -- but I've learned not to fold my legs back that far and it doesn't bother me anymore.

Nice writeup BTW. My dealer installed mine for me for free(!) when I brought the car in for unrelated service.



08-01-2011, 04:38 PM

#20

TurtleJames

FIA GT Champion
🚗🚗🚗🚗🚗



Drives: 2011 GTI
Join Date: Feb 2011
Location: NJ
Posts: 1,149

Quote:

Originally Posted by [Gt-me](#)
*Hi guys,
Sorry to ask such a newbie question but will this work on all Mk6 golfs?
Just picked up my 2009 Gt-tdi and was looking at doing this over the weekend.*

Hi. As far as I know it should work on all NA 2010+ MK6 seats. Being as we did not get the MK6 for 2009, I do not know if any changes were made to the seats from Europe. I imagine since it is a European piece, it should be the same and work for you. Just to be sure why don't you call your dealer with the part numbers for the storage drawers and see if they apply to your model? Good luck.

reply

Tags

None

Edit Tags

Quick Reply



Message:



Options

☐ Quote message in reply?

☒ Show your signature

Post Quick Reply

Go Advanced

[« Previous Thread](#) | [Next Thread »](#)

Posting Rules



You **may** post new threads

You **may** post replies

You **may** post attachments

You **may** edit your posts

BB code is **On**

Smilies are **On**

[IMG] code is **On**

HTML code is **Off**

Forum Jump


DIY Guides and Discussions



Go

All times are GMT -5. The time now is [12:39 AM](#).

-- New 3.7



Contact Us - [VW GTI MKVI Forum](#) / [VW Golf MKVI Forum](#) / [VW Golf R Forum](#) / [VW GTI Forum](#) - [Golfmk6.com](#) - [Archive](#) - [Top](#)